

Product datasheet

Recombinant human CSF-1-R protein ab56259

3 Images

Description

Product name	Recombinant human CSF-1-R protein
Biological activity	Specific activity 21 nmol/min/mg.
Purity	> 85 % Densitometry. Affinity purified.
Expression system	Insect cells
Protein length	Protein fragment
Animal free	No
Nature	Recombinant
Species	Human
Amino acids	539 to 972

Specifications

Our [Abpromise guarantee](#) covers the use of **ab56259** in the following tested applications.

The application notes include recommended starting dilutions; optimal dilutions/concentrations should be determined by the end user.

Applications	Functional Studies SDS-PAGE
Form	Liquid
Additional notes	ab204877 (Poly (4:1 Glu, Tyr) peptide) can be utilized as a substrate for assessing kinase activity

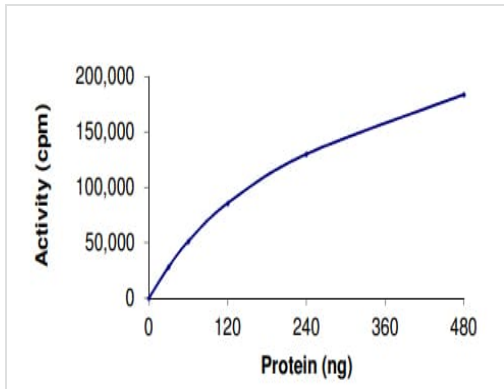
Preparation and Storage

Stability and Storage	Shipped on dry ice. Upon delivery aliquot and store at -80°C. Avoid freeze / thaw cycles. pH: 7.50 Constituents: 0.0038% EGTA, 0.00174% PMSF, 0.00385% DTT, 0.79% Tris HCl, 0.00292% EDTA, 25% Glycerol (glycerin, glycerine), 0.87% Sodium chloride This product is an active protein and may elicit a biological response in vivo, handle with caution.
------------------------------	--

General Info

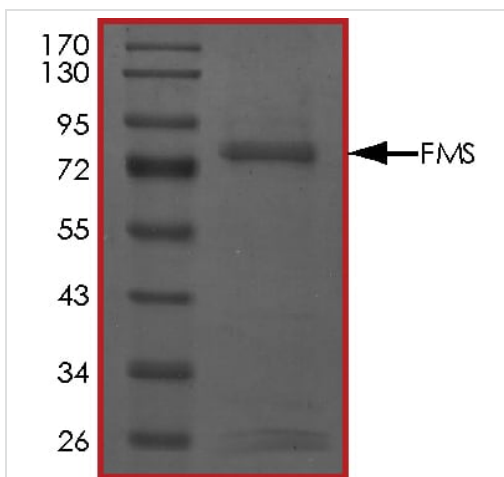
Function	Protein tyrosine-kinase transmembrane receptor for CSF1 and IL34.
Tissue specificity	Expressed in bone marrow and in differentiated blood mononuclear cells.
Sequence similarities	Belongs to the protein kinase superfamily. Tyr protein kinase family. CSF-1/PDGF receptor subfamily. Contains 5 Ig-like C2-type (immunoglobulin-like) domains. Contains 1 protein kinase domain.
Cellular localization	Membrane.

Images



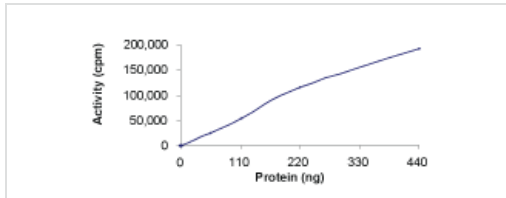
Functional Studies - Recombinant human CSF-1-R protein (ab56259)

The specific activity of CSF-1-R (ab56259) was determined to be 24 nmol/min/mg as per activity assay protocol



SDS-PAGE - Recombinant human CSF-1-R protein (ab56259)

SDS-PAGE analysis of ab56259.



Specific activity 21nmol/min/mg.

Functional Studies - Recombinant human CSF-1-R protein (ab56259)

Please note: All products are "FOR RESEARCH USE ONLY. NOT FOR USE IN DIAGNOSTIC PROCEDURES"

Our Abpromise to you: Quality guaranteed and expert technical support

- Replacement or refund for products not performing as stated on the datasheet
- Valid for 12 months from date of delivery
- Response to your inquiry within 24 hours

- We provide support in Chinese, English, French, German, Japanese and Spanish
- Extensive multi-media technical resources to help you
- We investigate all quality concerns to ensure our products perform to the highest standards

If the product does not perform as described on this datasheet, we will offer a refund or replacement. For full details of the Abpromise, please visit <https://www.abcam.com/abpromise> or contact our technical team.

Terms and conditions

- Guarantee only valid for products bought direct from Abcam or one of our authorized distributors