

Product datasheet

Recombinant human CSK protein (Active) ab268428

[2 Images](#)

Description

| | |
|--|---|
| Product name | Recombinant human CSK protein (Active) |
| Biological activity | The specific activity of ab268428 was 365 nmol/min/mg in a kinase assay using Poly (Glu ₄ , Tyr ₁) as substrate. |
| Purity | > 90 % SDS-PAGE. Affinity purified. |
| Expression system | Baculovirus infected Sf9 cells |
| Accession | P41240 |
| Protein length | Full length protein |
| Animal free | No |
| Nature | Recombinant |
| Species | Human |
| Molecular weight information | ~75 kDa by SDS-PAGE |
| Tags | GST tag N-Terminus |
| Additional sequence information | GenBank: NM_004383 |

Specifications

Our [Abpromise guarantee](#) covers the use of **ab268428** in the following tested applications.

The application notes include recommended starting dilutions; optimal dilutions/concentrations should be determined by the end user.

| | |
|---------------------|--------------------------------|
| Applications | Functional Studies SDS-PAGE |
| Form | Liquid |

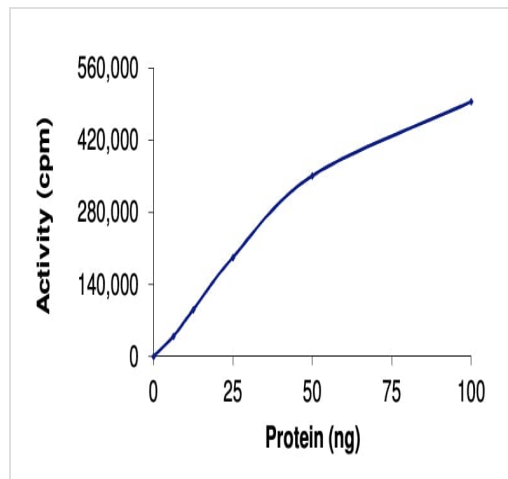
Preparation and Storage

| | |
|------------------------------|--|
| Stability and Storage | Shipped on Dry Ice. Upon delivery aliquot. Store at -80°C. Avoid freeze / thaw cycle. pH: 7.50 Constituents: 0.79% Tris HCl, 0.87% Sodium chloride, 0.004% DTT, 0.003% EDTA, 0.002% PMSF, 25% Glycerol (glycerin, glycerine) This product is an active protein and may elicit a biological response in vivo, handle with caution. |
|------------------------------|--|

General Info

| | |
|---|---|
| Function | Specifically phosphorylates 'Tyr-504' on LCK, which acts as a negative regulatory site. Can also act on the LYN and FYN kinases. |
| Tissue specificity | Expressed in lung and macrophages. |
| Sequence similarities | Belongs to the protein kinase superfamily. Tyr protein kinase family. CSK subfamily. Contains 1 protein kinase domain. Contains 1 SH2 domain. Contains 1 SH3 domain. |
| Post-translational modifications | Autophosphorylation of Tyr-304 occurs only at abnormally high CSK concentrations in vitro. |
| Cellular localization | Cytoplasm. Cell membrane. Mainly cytoplasmic, also present in lipid rafts. |

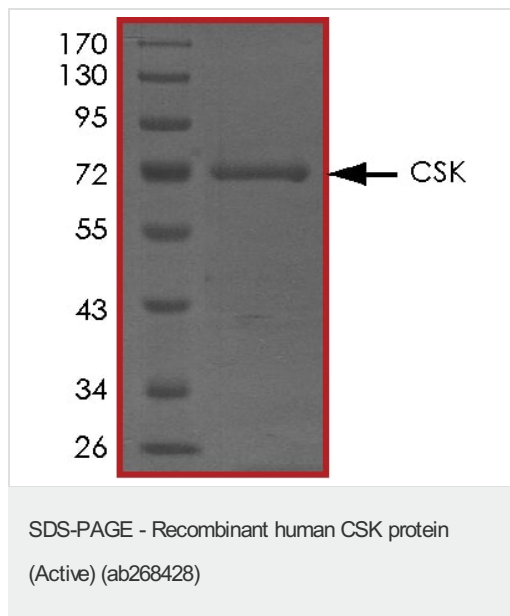
Images



The specific activity of ab268428 was 365 nmol/min/mg in a kinase assay using Poly (Glu₄, Tyr₁) as substrate.

Functional Studies - Recombinant human CSK protein (Active) (ab268428)

SDS-PAGE analysis of ab268428.



Please note: All products are "FOR RESEARCH USE ONLY. NOT FOR USE IN DIAGNOSTIC PROCEDURES"

Our Abpromise to you: Quality guaranteed and expert technical support

- Replacement or refund for products not performing as stated on the datasheet
- Valid for 12 months from date of delivery
- Response to your inquiry within 24 hours
- We provide support in Chinese, English, French, German, Japanese and Spanish
- Extensive multi-media technical resources to help you
- We investigate all quality concerns to ensure our products perform to the highest standards

If the product does not perform as described on this datasheet, we will offer a refund or replacement. For full details of the Abpromise, please visit <https://www.abcam.com/abpromise> or contact our technical team.

Terms and conditions

- Guarantee only valid for products bought direct from Abcam or one of our authorized distributors