

Product datasheet

Recombinant Human CSRP2BP protein ab163533

1 Image

Description

Product name	Recombinant Human CSRP2BP protein
Expression system	Wheat germ
Protein length	Full length protein
Animal free	No
Nature	Recombinant
Species	Human
Sequence	<p>MDSSIHSSLISRHDDEATRTSTSEGLEEGEVEGETLLIVE SEDQASVDL SHDQSGDSLNSDEGDVSWMEEQLSYFCDKCQKWIPAS QLREQLSYLKGDN FFRFTCSDCSADGKEQYERLKL TWQQVVMLAMYNLSLEG SGRQGYFRWKE DICAFIEKHWTFLG NRKKTSTWWSTVAGCLSVGSPMYFR SGAQEFGEPEG WWKLVHNKPPTMKPEGEKLSASTLKIKAAASKPTLDPIITVE GLRKASRN PVESAMELKEKRSRTQEAKDIRRAQKEAAGFLDRSTSST PVKFISRGRRP DVILEKGEVIDFSSLSSSDRTPLTSPSPSPSLDFSAPGTPA SHSATPSLL SEADLIPDVMPPQALFHDDDEMEGDGVIDPGMEYVPPPA GSVASGPVVG RKKVRGPEQIQEVESEEEKPDRMDIDSED TDSNTSLQT RAREKRKPQLE KDTKPKEPRYTPVSIYEEKLLLKRLEACPGAVAMTPEARR LKRKLMRQA KRDRGLPLFDLDQVVNAALLLV DGIYGAKEGGISRLPAGQ ATYR TTCQDF RILDYRQTSLSRKGFRHQTTKFLYRLVGS EDMAVDQSIVS PYTSRILKP YIRRDYETKPPKLQLLSQIRSHLHRSDPHWTPEPDAPLDY CYVRPNHIPT INSMCQEFFWPGIDLSECLQYPDFSVVVLYKKVIAFGFMV PDVKYNEAY ISFLFVHPEWRRAGIATFMIYHLIQTCMGKDVTLHVSASNP</p>

AMLLYQKFG
FKTEEYVLDFYDKYYPLESTECKHAFFLRRLRR

Amino acids 1 to 782
Tags GST tag N-Terminus

Specifications

Our [Abpromise guarantee](#) covers the use of **ab163533** in the following tested applications.

The application notes include recommended starting dilutions; optimal dilutions/concentrations should be determined by the end user.

Applications ELISA
Western blot

Form Liquid

Additional notes

Preparation and Storage

Stability and Storage Shipped on dry ice. Upon delivery aliquot and store at -80°C. Avoid freeze / thaw cycles.
pH: 8.00
Constituents: 0.31% Glutathione, 0.79% Tris HCl

General Info

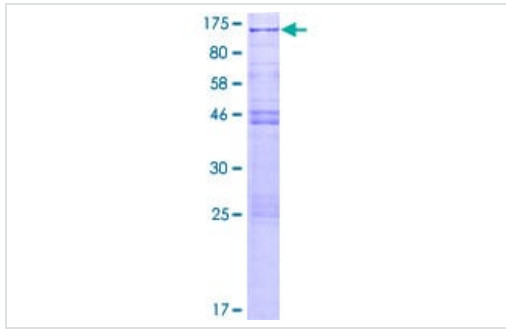
Function Component of the ATAC complex, a complex with histone acetyltransferase activity on histones H3 and H4. May function as a scaffold for the ATAC complex to promote ATAC complex stability. Has also weak histone acetyltransferase activity toward histone H4. Required for the normal progression through G1 and G2/M phases of the cell cycle.

Tissue specificity Expressed in skeletal muscle, heart, lung, placenta, brain, liver, pancreas and kidney. High expression in skeletal muscle and heart. Lower expression in lung.

Sequence similarities Contains 1 N-acetyltransferase domain.

Cellular localization Nucleus. Cytoplasm. Mainly nuclear.

Images



ab163533 on a 12.5% SDS-PAGE stained with Coomassie Blue.

SDS-PAGE - Recombinant Human CSR2BP
protein (ab163533)

Please note: All products are "FOR RESEARCH USE ONLY. NOT FOR USE IN DIAGNOSTIC PROCEDURES"

Our Abpromise to you: Quality guaranteed and expert technical support

- Replacement or refund for products not performing as stated on the datasheet
- Valid for 12 months from date of delivery
- Response to your inquiry within 24 hours

- We provide support in Chinese, English, French, German, Japanese and Spanish
- Extensive multi-media technical resources to help you
- We investigate all quality concerns to ensure our products perform to the highest standards

If the product does not perform as described on this datasheet, we will offer a refund or replacement. For full details of the Abpromise, please visit <https://www.abcam.com/abpromise> or contact our technical team.

Terms and conditions

- Guarantee only valid for products bought direct from Abcam or one of our authorized distributors