

Product datasheet

Recombinant Human CTP synthase/CTPS protein
ab132558

1 Image

Description

| | |
|-----------------------------------|---|
| Product name | Recombinant Human CTP synthase/CTPS protein |
| Expression system | Wheat germ |
| Accession | P17812 |
| Protein length | Full length protein |
| Animal free | No |
| Nature | Recombinant |
| Species | Human |
| Sequence | <p>MKYILVTGGVISGIGKGIASSVGTILKSCGLHVTSIKIDPYINID AGTF SPYEHGEVFLDDGGEVDLGLGNYERFLDIRLTKDNNLTT GKIYQYVINK ERKGDYLGKTVQVPHITDAIQEWVMRQALIPVDEDGLEP QVCVIELGGT VGDIESMPFIEAFRQFQFKVKRENFCNIHVSLVPQPSSTG EQKTKPTQNS VRELRLGLSPDLVVCRCSNPLDTSVKEKISMFCHVEPE QVICVHDVSSI YRVPLLLLEEQGVVDYFLRRLDLPIERQPRKMLMKWKEMA DRYDRLLETCS IALVGKYTKFSDSYASVIKALEHSALAINHKLEIKYIDSADLE PITSQEE PVRYHEAWQKLCSAHGVLVPGGFGVIRGTEGKIQAIAWAR NQKKPFLGVCL GMQLAVVEFSRNLVWQDANSTEFDPPTSHPVVDMPE HNPQMGGTMRL GKRRTLFQTKNSVMRKL YGDADYLEERHRHRFEVNPVWK KCLEEQGLKFV GQDVEGERMEVELEDHPFFVGVQYHPEFLSRPIKSPPY FLLLASVGR LSHYLQKGCRLSPRDTYSDRIGSSSPDSEITELKFPSINHD</p> |
| Predicted molecular weight | 91 kDa including tags |
| Amino acids | 1 to 591 |

Specifications

Our [Abpromise guarantee](#) covers the use of **ab132558** in the following tested applications.

The application notes include recommended starting dilutions; optimal dilutions/concentrations should be determined by the end user.

| | |
|-------------------------|---|
| Applications | ELISA SDS-PAGE Western blot |
| Form | Liquid |
| Additional notes | This product was previously labelled as CTP synthase. |

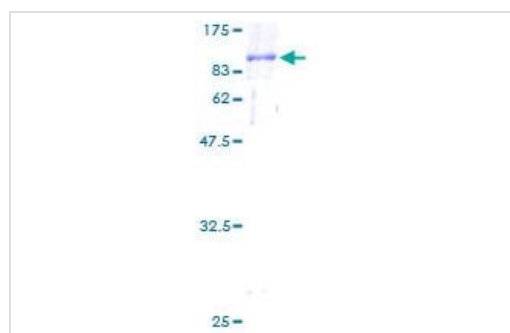
Preparation and Storage

| | |
|------------------------------|--|
| Stability and Storage | Shipped on dry ice. Upon delivery aliquot and store at -80°C. Avoid freeze / thaw cycles. pH: 8.00 Constituents: 0.31% Glutathione, 0.79% Tris HCl |
|------------------------------|--|

General Info

| | |
|------------------------------|--|
| Relevance | CTP synthase (CTPS) catalyzes the ATP-dependent conversion of UTP to CTP using either L-glutamine or ammonia as the source of nitrogen. The enzyme is important in the biosynthesis nucleic acids. It has a key role in cell growth, development, and tumorigenesis. |
| Cellular localization | Cytosol, membrane |

Images



12.5% SDS-PAGE analysis of ab132558 stained with Coomassie Blue.

SDS-PAGE - Recombinant Human CTP synthase/CTPS protein (ab132558)

Please note: All products are "FOR RESEARCH USE ONLY. NOT FOR USE IN DIAGNOSTIC PROCEDURES"

Our Abpromise to you: Quality guaranteed and expert technical support

- Replacement or refund for products not performing as stated on the datasheet
- Valid for 12 months from date of delivery
- Response to your inquiry within 24 hours

- We provide support in Chinese, English, French, German, Japanese and Spanish
- Extensive multi-media technical resources to help you
- We investigate all quality concerns to ensure our products perform to the highest standards

If the product does not perform as described on this datasheet, we will offer a refund or replacement. For full details of the Abpromise, please visit <https://www.abcam.com/abpromise> or contact our technical team.

Terms and conditions

- Guarantee only valid for products bought direct from Abcam or one of our authorized distributors