

Product datasheet

Recombinant human Cyclin E2 + CDK2 protein (Active)  
ab268396

2 Images

Description

<b>Product name</b>	Recombinant human Cyclin E2 + CDK2 protein (Active)	
<b>Biological activity</b>	The specific activity of ab268396 was 60 nmol/min/min in a kinase assay using histone H1 as substrate.	
<b>Purity</b>	> 90 % SDS-PAGE. Affinity purified.	
<b>Expression system</b>	Baculovirus infected Sf9 cells	
<b>Accession</b>	<a href="#">P24941</a> <a href="#">O96020</a>	
<b>Protein length</b>	Full length protein	
<b>Animal free</b>	No	
<b>Nature</b>	Recombinant	
<b>Amino Acid Sequence 1</b>		
<b>Species</b>	Human	
<b>Sequence</b>	MENFQKVEKIGEGTYGVVYKARNKLTGEVVALKKIRLDTET EGV PSTAIR EISLLKELNHPNIVKLLDVIHTENKLYLVFEFLHQDLKKFMD ASALTGIP LPLIKSYLFQLLQGLAFCHSHRVLHRDLKPQNLLINTEGAIK LADFGLAR AFGVPVVRTYTHEVVT LWYRAPEILLGCKYYSTAVDWSLGC IFAEMVTRR ALFPGDSEIDQLFRIFRTLGTPEVWPGVTSMPDYKPSF PKWARQDFSK VVPPLDEDGRSLLSQMLHYDPNKRISAKAALAHPPFQDVT KPVPHLRL	
<b>Molecular weight information</b>	SDS-PAGE molecular weight: ~58 kDa	
<b>Amino acids</b>	1 to 298	
<b>Tags</b>	GST tag N-Terminus	
<b>Additional sequence information</b>	GenBank: NM_001798	
<b>Amino Acid Sequence 2</b>		

<b>Species</b>	Human
<b>Sequence</b>	MSRRSSRLQAKQQPQPSQTESPQEAQIIQAKKRKTTQDV KKRREEVTKKH QYEIRNCWPPVLSGGISPCIIETPHKEIGTSDFSRFTNYRFK NLFINPS PLPDLSWGCSKEVWLNMLKESRYVHDKHFEVLHSDLE PQMRSILLDWLL EVCEVYTLHRETFYLAQDFDFRMLTQKDINKNMLQLIGITS LFIASKLE EYAPKLQEFAYVTDGACSEEDILRMELIILKALKWELCPVTI ISWLNLF LQVDALKDAPKVLLPQYSQETFIQIAQLLDLCILAIDSLEFQ YRILTAAA LCHFTSIEVVKKASGLEWDSISECVDWMVPFVNVVKSTS PVKLTFFKKIP MEDRHNIQTHTNYLAMLEEVNYINTFRKGGQLSPVCNGGIM TPPKSTEKP PGKH
<b>Molecular weight information</b>	SDS-PAGE molecular weight: ~72 kDa
<b>Amino acids</b>	1 to 404
<b>Tags</b>	GST tag N-Terminus
<b>Additional sequence information</b>	GenBank: NM_057749

## Specifications

---

Our [Abpromise guarantee](#) covers the use of **ab268396** in the following tested applications.

The application notes include recommended starting dilutions; optimal dilutions/concentrations should be determined by the end user.

<b>Applications</b>	Functional Studies SDS-PAGE
<b>Form</b>	Liquid
<b>Additional notes</b>	Proteins co-expressed.

## Preparation and Storage

---

<b>Stability and Storage</b>	Shipped on Dry Ice. Upon delivery aliquot. Store at -80°C. Avoid freeze / thaw cycle. pH: 7.50 Constituents: 0.79% Tris HCl, 0.87% Sodium chloride, 0.31% Glutathione, 0.003% EDTA, 0.004% DTT, 0.002% PMSF, 25% Glycerol (glycerin, glycerine) This product is an active protein and may elicit a biological response in vivo, handle with caution.
------------------------------	---

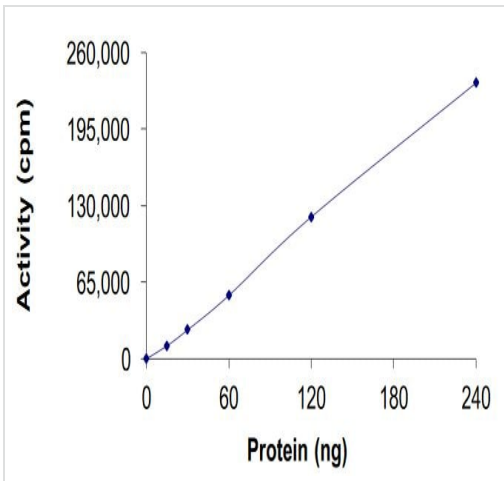
## General Info

---

<b>Cellular localization</b>	Cyclin E2: Nuclear
------------------------------	--------------------

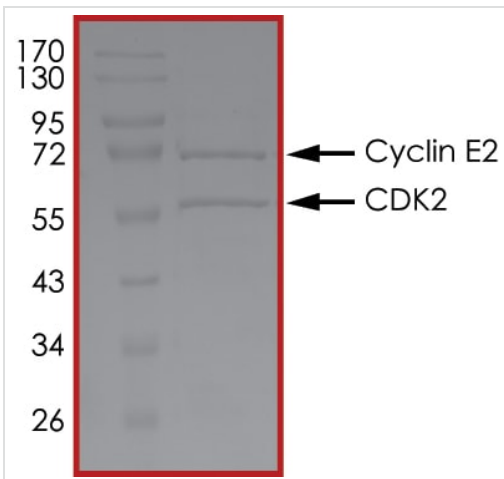
## Images

---



The specific activity of ab268396 was 60 nmol/min/min in a kinase assay using histone H1 as substrate.

Functional Studies - Recombinant human Cyclin E2 + CDK2 protein (Active) (ab268396)



SDS-PAGE analysis of ab268396.

SDS-PAGE - Recombinant human Cyclin E2 + CDK2 protein (Active) (ab268396)

**Please note:** All products are "FOR RESEARCH USE ONLY. NOT FOR USE IN DIAGNOSTIC PROCEDURES"

### Our Abpromise to you: Quality guaranteed and expert technical support

- Replacement or refund for products not performing as stated on the datasheet
- Valid for 12 months from date of delivery
- Response to your inquiry within 24 hours
- We provide support in Chinese, English, French, German, Japanese and Spanish
- Extensive multi-media technical resources to help you
- We investigate all quality concerns to ensure our products perform to the highest standards

If the product does not perform as described on this datasheet, we will offer a refund or replacement. For full details of the Abpromise, please visit <https://www.abcam.com/abpromise> or contact our technical team.

## Terms and conditions

---

- Guarantee only valid for products bought direct from Abcam or one of our authorized distributors