

Product datasheet

Recombinant Human Cyclin T2/CCNT2 protein
ab207112

1 Image

Description

Product name	Recombinant Human Cyclin T2/CCNT2 protein
Purity	> 70 % Densitometry.
Expression system	Baculovirus infected Sf9 cells
Accession	O60583
Protein length	Full length protein
Animal free	No
Nature	Recombinant
Species	Human
Sequence	<p>MASGRGASSRWFFFTREQLNTPSRRCGVEADKELSCRQ QANLIQEMGQR LNVSQTLTINTAIVMHRFYMHHSFTKFNKNISSTALFLAAKV EEQARKL EHVIKVAHAACLHPLEPLLDTKCDAYLQQTQELVILETIMLQT LGFEITIE HPHTDVVKCTQLVRASKDLAQTSYFMATNSLHLTTFCLQY KPTVIACVCI HLACKWSNWEIPVSTDGKHWWEYDPTVTLELLDELTHE FLQILEKTPNR LKKIRNWRANQAARKPKVDGQVSETPLLGSSLVQNSILVD SVTGVPTNPS FQKPSTSAFPAPVPLNSGNISVQDSHTSDNLSMLATGMP STSYGLSSHQE WPQHQDSARTEQLYSQKQETSLSGSQYNINFQQGPSISLH SGLHHRPDKI SDHSSVKQEYTHKAGSSKHHGPISSTPGIIPQKMSLDKYRE KRKLETLDL DVRDHIAAQVEQQHKQGQSQAASSSSVTSPIKMKIPIANT EKYMADKKE KSGSLKLRIPPTDKSASKEELKMKIKVSSSERHSSSDEG SGKSKHSSP HISRDHKEKHKEHPSSRHHTSSHKHSKSHSGSSSGGSKH SADGIPPTVLR</p>

SPVGLSSDGISSSSSSSRKRLHVNDASHNHHSKMSKSSK
SSGGLRTSQHP RETGQEASGDQRS

Predicted molecular weight	102 kDa including tags
Amino acids	1 to 663
Tags	GST tag N-Terminus
Additional sequence information	NM_001241

Specifications

Our [Abpromise guarantee](#) covers the use of **ab207112** in the following tested applications.

The application notes include recommended starting dilutions; optimal dilutions/concentrations should be determined by the end user.

Applications	SDS-PAGE
Form	Liquid
Additional notes	This product was previously labelled as Cyclin T2

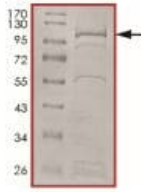
Preparation and Storage

Stability and Storage	Shipped on Dry Ice. Upon delivery aliquot. Store at -80°C. Avoid freeze / thaw cycle. pH: 7.50 Constituents: 0.79% Tris HCl, 0.28% Sodium chloride, 0.31% Glutathione, 0.003% EDTA, 0.004% DTT, 0.002% PMSF, 25% Glycerol (glycerin, glycerine)
------------------------------	---

General Info

Function	Regulatory subunit of the cyclin-dependent kinase pair (CDK9/cyclin T) complex, also called positive transcription elongation factor B (P-TEFB), which is proposed to facilitate the transition from abortive to production elongation by phosphorylating the CTD (carboxy-terminal domain) of the large subunit of RNA polymerase II (RNAP II).
Tissue specificity	Ubiquitously expressed.
Sequence similarities	Belongs to the cyclin family. Cyclin C subfamily.
Cellular localization	Nucleus.

Images



SDS-PAGE analysis of ab207112 which was determined to be >70% pure by densitometry.

SDS-PAGE - Recombinant Human Cyclin T2/CCNT2 protein (ab207112)

Please note: All products are "FOR RESEARCH USE ONLY. NOT FOR USE IN DIAGNOSTIC PROCEDURES"

Our Abpromise to you: Quality guaranteed and expert technical support

- Replacement or refund for products not performing as stated on the datasheet
- Valid for 12 months from date of delivery
- Response to your inquiry within 24 hours
- We provide support in Chinese, English, French, German, Japanese and Spanish
- Extensive multi-media technical resources to help you
- We investigate all quality concerns to ensure our products perform to the highest standards

If the product does not perform as described on this datasheet, we will offer a refund or replacement. For full details of the Abpromise, please visit <https://www.abcam.com/abpromise> or contact our technical team.

Terms and conditions

- Guarantee only valid for products bought direct from Abcam or one of our authorized distributors