

Product datasheet

Recombinant Human Cyclophilin 40 protein ab198461

1 Image

Description

Product name Recombinant Human Cyclophilin 40 protein

Purity > 73 % SDS-PAGE.

Expression system Escherichia coli

Accession [Q08752](#)

Protein length Full length protein

Animal free No

Nature Recombinant

Species Human

Sequence

```

MSPILGYWKIKGLVQPTRLLEYLEEKYEEHLYERDEGDK
WRNKKFELGL
EFPNLPYYIDGDVKLTQSMAIRYADKHNMLGGCPKERA EI
SMLEGAVL
DIRYGVSRIAYSKDFETLKVDFLSKLPEMLKMFEDRLCHKT
YLN GDHVTH
PDFMLYDALDVVLYMDPMCLDAFPKLVCFKKRIEAI PQDK
YLKSSKYIA
WPLQG WQATFGGGDHPPKSDLEVLFGGPLGSSHPSPQ
AKPSNPSNPRVFF
DVDIGGERVGRVLEL FADMPKTAENFRALCTGEGKIGHTT
GKPLHFKG
CPFHRIKKFMIQGGDFSNQNGTGGESYGEKFEDENFH YK
HDREGLLSM
ANAGRNTNGSQFFITVPTPHLDGKHVVF GQVIKIGIVARIL
ENVEVKGE
KPAKLCVIAECGELKEGDDGGIFPKDGS GDSHPDFPEDA
DIDLKDVKIL
LITEDLKNIGNTFFKSQNWEMA IKKYAEVLRVYDSSKAVIET
ADR AKLQP
IALSCVLNIGACKLKMSNWQGAIDSCLEALELDPSNTKALY
RRAQGWQGL
KEYDQALADLKKAQGIAPEDKAIQAELLKVKQK IKAQKDK
EKAVYAKMFA
    
```

Predicted molecular weight 68 kDa including tags

Amino acids	2 to 370
Tags	GST tag N-Terminus
Additional sequence information	NM_005038.

Specifications

Our [Abpromise guarantee](#) covers the use of **ab198461** in the following tested applications.

The application notes include recommended starting dilutions; optimal dilutions/concentrations should be determined by the end user.

Applications	SDS-PAGE
Form	Liquid
Additional notes	Useful for the study of enzyme kinetics, screening inhibitors, and selectivity profiling.

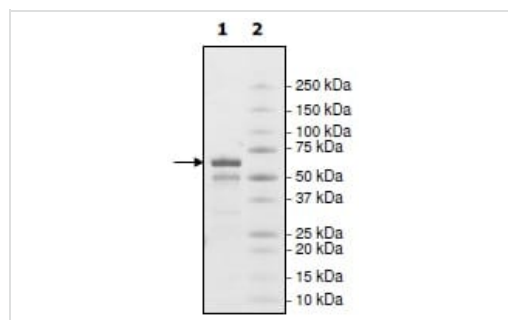
Preparation and Storage

Stability and Storage	Shipped on Dry Ice. Store at -80°C. Avoid freeze / thaw cycle. pH: 8.00 Constituents: 0.63% Tris HCl, 0.64% Sodium chloride, 0.02% Potassium chloride, 0.49% Glutathione, 20% Glycerol
------------------------------	--

General Info

Function	PPases accelerate the folding of proteins. It catalyzes the cis-trans isomerization of proline imidic peptide bonds in oligopeptides.
Tissue specificity	Widely expressed.
Sequence similarities	Belongs to the cyclophilin-type PPase family. PPase D subfamily. Contains 1 PPase cyclophilin-type domain. Contains 3 TPR repeats.
Cellular localization	Cytoplasm.

Images



SDS-PAGE - Recombinant Human Cyclophilin 40 protein (ab198461)

4-20% SDS-PAGE analysis of ab198461 with Coomassie staining.

Lane 1: 3.7 µg ab198461

Lane 2: Protein marker

Please note: All products are "FOR RESEARCH USE ONLY. NOT FOR USE IN DIAGNOSTIC PROCEDURES"

Our Abpromise to you: Quality guaranteed and expert technical support

- Replacement or refund for products not performing as stated on the datasheet
- Valid for 12 months from date of delivery
- Response to your inquiry within 24 hours

- We provide support in Chinese, English, French, German, Japanese and Spanish
- Extensive multi-media technical resources to help you
- We investigate all quality concerns to ensure our products perform to the highest standards

If the product does not perform as described on this datasheet, we will offer a refund or replacement. For full details of the Abpromise, please visit <https://www.abcam.com/abpromise> or contact our technical team.

Terms and conditions

- Guarantee only valid for products bought direct from Abcam or one of our authorized distributors