

Product datasheet

Recombinant human Cystatin-B protein ab211315

1 Image

Description

Product name	Recombinant human Cystatin-B protein	
Biological activity	The IC ₅₀ value is < 3.0nM. The inhibitory function of Stefin B on protease activity of papain was measured by a fluorometric assay using Z-FR-AMC at pH 7.5 at 25°C.	
Purity	> 95 % SDS-PAGE. ab211315 was purified using conventional chromatography techniques.	
Endotoxin level	< 1.000 Eu/μg	
Expression system	Escherichia coli	
Accession	P04080	
Protein length	Full length protein	
Animal free	No	
Nature	Recombinant	
Species	Human	
Sequence	MGSSHHHHHHSSGLVPRGSHMMCGAPSATQPATAET QHIADQVRSQLEEK ENKKFPVFKAVSFKSQVVAGTNYFIKVVHVGDEDFVHL RVFQSLPHENKPL TLSNYQTNKAKHDELTYP	
Predicted molecular weight	13 kDa including tags	
Amino acids	1 to 98	
Tags	His tag N-Terminus	
Additional sequence information	NP_000091.	

Specifications

Our [Abpromise guarantee](#) covers the use of **ab211315** in the following tested applications.

The application notes include recommended starting dilutions; optimal dilutions/concentrations should be determined by the end user.

Applications	<ul style="list-style-type: none"> Mass Spectrometry Functional Studies SDS-PAGE
Mass spectrometry	MALDI-TOF
Form	Liquid

Additional notes

This product was previously labelled as Stefin B

Preparation and Storage

Stability and Storage

Shipped at 4°C. Store at +4°C short term (1-2 weeks). Upon delivery aliquot. Store at -20°C or -80°C. Avoid freeze / thaw cycle.

pH: 8

Constituents: 0.32% Tris HCl, 0.29% Sodium chloride

This product is an active protein and may elicit a biological response in vivo, handle with caution.

General Info

Function

This is an intracellular thiol proteinase inhibitor. Tightly binding reversible inhibitor of cathepsins L, H and B.

Involvement in disease

Defects in CSTB are the cause of progressive myoclonic epilepsy type 1 (EPM1) [MIM:254800]. EPM1 is an autosomal recessive disorder characterized by severe, stimulus-sensitive myoclonus and tonic-clonic seizures. The onset, occurring between 6 and 13 years of age, is characterized by convulsions. Myoclonus begins 1 to 5 years later. The twitchings occur predominantly in the proximal muscles of the extremities and are bilaterally symmetrical, although asynchronous. At first small, they become late in the clinical course so violent that the victim is thrown to the floor. Mental deterioration and eventually dementia develop.

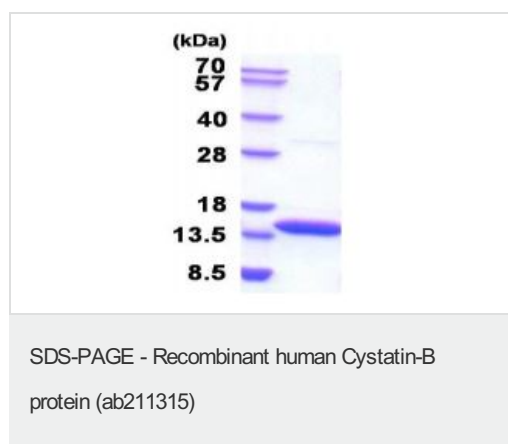
Sequence similarities

Belongs to the cystatin family.

Cellular localization

Cytoplasm. Nucleus.

Images



15% SDS-PAGE analysis of ab211315 (3µg).

Please note: All products are "FOR RESEARCH USE ONLY. NOT FOR USE IN DIAGNOSTIC PROCEDURES"

Our Abpromise to you: Quality guaranteed and expert technical support

- Replacement or refund for products not performing as stated on the datasheet

- Valid for 12 months from date of delivery
- Response to your inquiry within 24 hours

- We provide support in Chinese, English, French, German, Japanese and Spanish
- Extensive multi-media technical resources to help you
- We investigate all quality concerns to ensure our products perform to the highest standards

If the product does not perform as described on this datasheet, we will offer a refund or replacement. For full details of the Abpromise, please visit <https://www.abcam.com/abpromise> or contact our technical team.

Terms and conditions

- Guarantee only valid for products bought direct from Abcam or one of our authorized distributors