

Product datasheet

# Recombinant Human Cytochrome P450 2B6/CYP2B6 protein ab114648

1 Image

Description

---

<b>Product name</b>	Recombinant Human Cytochrome P450 2B6/CYP2B6 protein
<b>Expression system</b>	Wheat germ
<b>Accession</b>	<a href="#">P20813</a>
<b>Protein length</b>	Full length protein
<b>Animal free</b>	No
<b>Nature</b>	Recombinant
<b>Species</b>	Human
<b>Sequence</b>	<p>MELSVLLFLALLTGLLLLLVQRHPNTHDRLPPGPRPLPLLG  NLLQMDDRG  LLKSFLRFREKYGDVFTVHLGPRPVVMLCGVEAIREALVD  KAEAFSGRGK  IAMVDPFFRGYGVIFANGNRWKVLRRFSVTTMRDFGMGK  RSVEERIQEEA  QCLIEELRKS GALMDPTFLFQSITANIICSVFGKRFHYQD  QEFLKMLN  LFYQTFSLISSVFGQLFELFSGFLTYFPGAHRQVYKNLQEIN  AYIGHSVE  KHRETLDPSPAPKDLIDTYLLHMEEKSNAHSEFSHQNLNL  NTLSLFFAGT  ETTSTTLRYGFLMLKYPHVAERYREIEQVIGPHRPPPELH  DRAKMPYTE  AVIYEIQRFSDLLPMGVPHIVTQHTSFRGYIIPKDTEVFLILST  ALHDPH  YFEKPDADFNPDPHFLDANGALKKTEAFIPFSLGKRICLGEGI  ARAELFLFF  TTILQNFSMASPVAPEDIDLTPQECGVGKIPPTYQIRFLPR</p>
<b>Predicted molecular weight</b>	80 kDa including tags
<b>Amino acids</b>	1 to 491

Specifications

---

Our [Abpromise guarantee](#) covers the use of **ab114648** in the following tested applications.

The application notes include recommended starting dilutions; optimal dilutions/concentrations should be determined by the end user.

<b>Applications</b>	ELISA SDS-PAGE Western blot
<b>Form</b>	Liquid
<b>Additional notes</b>	This product was previously labelled as Cytochrome P450 2B6.

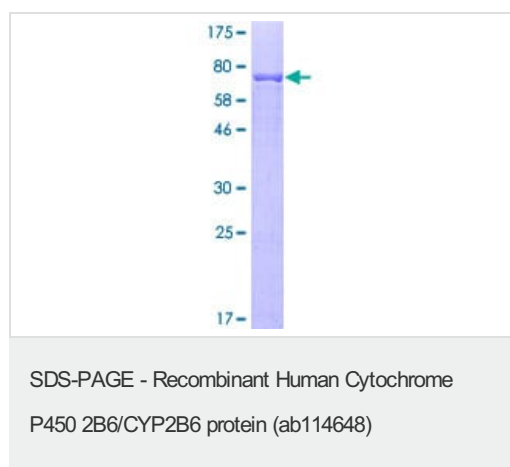
## Preparation and Storage

<b>Stability and Storage</b>	Shipped on dry ice. Upon delivery aliquot and store at -80°C. Avoid freeze / thaw cycles. pH: 8.00 Constituents: 0.3% Glutathione, 0.79% Tris HCl
------------------------------	---

## General Info

<b>Function</b>	Cytochromes P450 are a group of heme-thiolate monooxygenases. In liver microsomes, this enzyme is involved in an NADPH-dependent electron transport pathway. It oxidizes a variety of structurally unrelated compounds, including steroids, fatty acids, and xenobiotics.
<b>Tissue specificity</b>	Expressed in liver, lung and heart right ventricle.
<b>Sequence similarities</b>	Belongs to the cytochrome P450 family.
<b>Post-translational modifications</b>	Phosphorylation is accompanied by a decrease in enzyme activity.
<b>Cellular localization</b>	Endoplasmic reticulum membrane. Microsome membrane.

## Images



ab114648 analysed on a 12.5% SDS-PAGE gel stained with Coomassie Blue.

**Please note:** All products are "FOR RESEARCH USE ONLY. NOT FOR USE IN DIAGNOSTIC PROCEDURES"

## **Our Abpromise to you: Quality guaranteed and expert technical support**

---

- Replacement or refund for products not performing as stated on the datasheet
- Valid for 12 months from date of delivery
- Response to your inquiry within 24 hours
  
- We provide support in Chinese, English, French, German, Japanese and Spanish
- Extensive multi-media technical resources to help you
- We investigate all quality concerns to ensure our products perform to the highest standards

If the product does not perform as described on this datasheet, we will offer a refund or replacement. For full details of the Abpromise, please visit <https://www.abcam.com/abpromise> or contact our technical team.

## **Terms and conditions**

---

- Guarantee only valid for products bought direct from Abcam or one of our authorized distributors