

Product datasheet

Recombinant Human Cytokeratin 8 protein ab156970

1 References 1 Image

Description

<b>Product name</b>	Recombinant Human Cytokeratin 8 protein
<b>Purity</b>	> 90 % SDS-PAGE. ab156970 is purified using conventional chromatography techniques.
<b>Expression system</b>	Escherichia coli
<b>Accession</b>	<a href="#">P05787</a>
<b>Protein length</b>	Full length protein
<b>Animal free</b>	No
<b>Nature</b>	Recombinant
<b>Species</b>	Human
<b>Sequence</b>	<p>MGSSHHHHHHSSGLVPRGSHMGSMSIRVTQKSYKVSTSG            PRAFSSRSYTS            GPGSRISSSSFSRVGSNFRGGLGGGYGGASGMGGITAV            TVNQSLLSPLV            LEVDPNIQAVRTQEKEQIKTLNKFASFIDKVRFLQEQNKM            LETKWSLLQ            QQKTARSNMDNMFESYINNLRRQLETLGQEKLKLEAELGN            MQGLVEDFKN            KYEDEINKRTEMENEFVLIKKDVDEAYMNKVELESRLEGL            TDEINFLRQL            YEEEIRELQSQISDTSVVL SMDNSRSLDMSIAEVKAQYE            DIANRSRAE            AESMYQIKYEELQSLAGKHGDDLRRTKTEISEMNRNISRLQ            AEIEGLKGQ            RASLEAAIADAEQRGELAIKDANAKLSELEAALQRAKQDM            ARQLREYQEL            MNVKLALDIEIATYRKLLEGEESRLESGMQNMSIHTKTTSG            YAGGLSSAY            GGLTSPGLSYSLSGSSFGSGAGSSSFRTSSSRVAVVKKIE            TRDGKLVSES SDVLPK</p>
<b>Predicted molecular weight</b>	56 kDa including tags
<b>Amino acids</b>	1 to 483
<b>Tags</b>	His tag N-Terminus

## Specifications

---

Our [Abpromise guarantee](#) covers the use of **ab156970** in the following tested applications.

The application notes include recommended starting dilutions; optimal dilutions/concentrations should be determined by the end user.

<b>Applications</b>	SDS-PAGE
<b>Form</b>	Liquid

## Preparation and Storage

---

<b>Stability and Storage</b>	Shipped at 4°C. Store at +4°C short term (1-2 weeks). Upon delivery aliquot. Store at -20°C or -80°C. Avoid freeze / thaw cycle. pH: 8.00 Constituents: 2.4% Urea, 0.32% Tris HCl, 10% Glycerol
------------------------------	---

## General Info

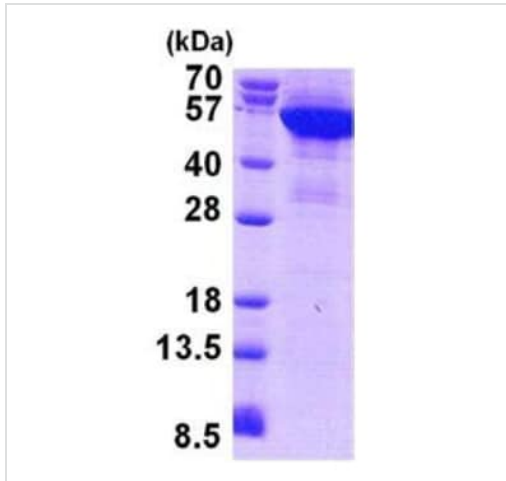
---

<b>Function</b>	Together with KRT19, helps to link the contractile apparatus to dystrophin at the costameres of striated muscle.
<b>Tissue specificity</b>	Observed in muscle fibers accumulating in the costameres of myoplasm at the sarcolemma membrane in structures that contain dystrophin and spectrin. Expressed in gingival mucosa and hard palate of the oral cavity.
<b>Involvement in disease</b>	Cirrhosis
<b>Sequence similarities</b>	Belongs to the intermediate filament family.
<b>Post-translational modifications</b>	Phosphorylation on serine residues is enhanced during EGF stimulation and mitosis. Ser-74 phosphorylation plays an important role in keratin filament reorganization. O-glycosylated. O-GlcNAcylation at multiple sites increases solubility, and decreases stability by inducing proteasomal degradation. O-glycosylated (O-GlcNAcylated), in a cell cycle-dependent manner.
<b>Cellular localization</b>	Cytoplasm. Nucleus, nucleoplasm. Nucleus matrix.

---

## Images

---



15% SDS-PAGE analysis of ab156970 (3 µg).

SDS-PAGE - Recombinant Human Cytokeratin 8 protein (ab156970)

**Please note:** All products are "FOR RESEARCH USE ONLY. NOT FOR USE IN DIAGNOSTIC PROCEDURES"

### Our Abpromise to you: Quality guaranteed and expert technical support

---

- Replacement or refund for products not performing as stated on the datasheet
- Valid for 12 months from date of delivery
- Response to your inquiry within 24 hours
- We provide support in Chinese, English, French, German, Japanese and Spanish
- Extensive multi-media technical resources to help you
- We investigate all quality concerns to ensure our products perform to the highest standards

If the product does not perform as described on this datasheet, we will offer a refund or replacement. For full details of the Abpromise, please visit <https://www.abcam.com/abpromise> or contact our technical team.

### Terms and conditions

---

- Guarantee only valid for products bought direct from Abcam or one of our authorized distributors