

Product datasheet

Recombinant Human DAB2 protein ab132218

1 Image

Description

<b>Product name</b>	Recombinant Human DAB2 protein
<b>Expression system</b>	Wheat germ
<b>Accession</b>	<a href="#">P98082</a>
<b>Protein length</b>	Full length protein
<b>Animal free</b>	No
<b>Nature</b>	Recombinant
<b>Species</b>	Human

Sequence

```

MSNEVETSATNGQPDAQAPKAPSKKEKKKKGPEKTDEY
LLARFKGDGVKY
KAKLIGIDVDPDARGDKMSQDSMMKLGMAAAGRSQGG
HKQRWVNISLS
GIKIIDEKTGVIEHEHPVNKISFIARDVTDNRAFQYVCGGEG
QHQQFAIK
TGQQAEPVLDLKDQFQVMNVKKKEEKKKIEEASKAVE
NGSEALMILD
DQTNKLGKSGVDQMDLFGDMSTPPDLNSPTESKDILLVDL
NSEIDTNQNSL
RENPFVTNGITSCSLPRPTPQASFLPENAFSANLNFFPTPN
PDPFRDDPF
TQPDQSTPSSFDSLKSPDQKKENSSSSSTPLSNGLNGD
VDYFGQQFDQI
SNRTGKQEAQAGPWPFFSSQTQPAVRTQNGVSEREQNG
FSVKSSPNPFVG
SPPKGLSIQNGVKQDLESSVQSSPHDSIAIIPPPQSTKPGR
GRRTAKSSA
NDLLASDIFAPPVSEPSGQASPTGQPTALQPNPLDLFKTS
APAPVGPLVG
LGGVTVTLQAGPWNTASLVFNQSPSMAPGAMMGQPS
GFSQPVIFGTSP
AVSGWNQPSFFAASPPPPVPPVWGPSASVAPNAWSTT
SPLGNPFQSNIFP
APAVSTQPPSMHSSLLVTPPQPPPRAGPPKDISSDAFTA
LDPLGDKEIKD
VKEMFKDFQLWQPPAVPARKGEQTSSGTLASFASYFNS
KVGIPQENADHD
    
```

DFDANQLLNKINEPPKPAPRQVSLPVTKSTDNAFENPFFK  
DSFGSSQASV ASSQPVSSEMYRDPFGNPFA

**Predicted molecular weight** 110 kDa including tags  
**Amino acids** 1 to 770

## Specifications

---

Our [Abpromise guarantee](#) covers the use of **ab132218** in the following tested applications.

The application notes include recommended starting dilutions; optimal dilutions/concentrations should be determined by the end user.

**Applications** ELISA  
SDS-PAGE  
Western blot

**Form** Liquid

## Preparation and Storage

---

**Stability and Storage** Shipped on dry ice. Upon delivery aliquot and store at -80°C. Avoid freeze / thaw cycles.  
pH: 8.00  
Constituents: 0.31% Glutathione, 0.79% Tris HCl

## General Info

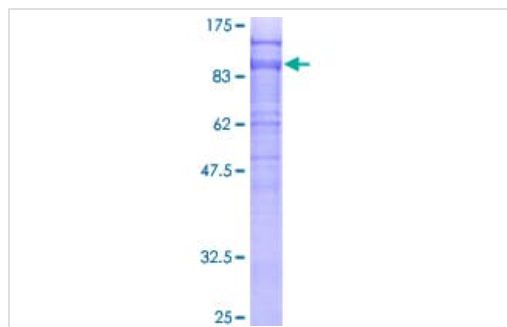
---

**Relevance** DAB2 is a component of the CSF1 signal transduction pathway. DAB2 mRNA is expressed in normal ovarian epithelial cells but is down regulated or absent from ovarian carcinoma cell lines. The down regulation of DAB2 may play an important role in ovarian carcinogenesis. This gene was initially named DOC2 (for Differentially expressed in Ovarian Cancer) and is distinct from the DOC2A and DOC2B genes (for double C2 like domains, alpha and beta).

**Cellular localization** Cytoplasmic vesicle; clathrin coated vesicle; clathrin coated vesicle membrane. Cell membrane; coated pit; clathrin coated pit. Note: Colocalizes with large insert containing isoforms of MYO6 at clathrin coated pits/vesicles.

## Images

---



12.5% SDS-PAGE analysis of ab132218 stained with Coomassie Blue.

SDS-PAGE - Recombinant Human DAB2 protein  
(ab132218)

**Please note:** All products are "FOR RESEARCH USE ONLY. NOT FOR USE IN DIAGNOSTIC PROCEDURES"

### **Our Abpromise to you: Quality guaranteed and expert technical support**

---

- Replacement or refund for products not performing as stated on the datasheet
- Valid for 12 months from date of delivery
- Response to your inquiry within 24 hours
  
- We provide support in Chinese, English, French, German, Japanese and Spanish
- Extensive multi-media technical resources to help you
- We investigate all quality concerns to ensure our products perform to the highest standards

If the product does not perform as described on this datasheet, we will offer a refund or replacement. For full details of the Abpromise, please visit <https://www.abcam.com/abpromise> or contact our technical team.

### **Terms and conditions**

---

- Guarantee only valid for products bought direct from Abcam or one of our authorized distributors