

Product datasheet

Recombinant Human DARS2 protein ab162989

1 Image

Overview

<b>Product name</b>	Recombinant Human DARS2 protein
<b>Protein length</b>	Full length protein

Description

<b>Nature</b>	Recombinant
<b>Source</b>	Wheat germ
<b>Amino Acid Sequence</b>	
<b>Species</b>	Human

<b>Sequence</b>	<p>MYFPSWLSQLYRGLSRPIRRTTQPIWGSLYRSLLQSSQ          RRIPEFSSFVVR          TNTCGELRSSH LGQEVTL CGW IQYRRQNTFLVLRDFD          GLVQVIIPQDESA          ASVKKILCEAPVESVVQVSGTVISRPAGQENPKMPTG          EIEIKVKTAE LLN          ACKKLPFEIKNFVKKTEALRLQYRYLDLRSFQM QYNLR          LRSQMVMKMREY          LCNLHGFVDIETPTLFKRTPGGAKEFLVPSREPGKFYS          LPQSPQQFKQLL          MVGGLDRYFQV ARCYRDEGSRPDRQPEFTQIDIEMSF          VDQTGIQSLIEGL          LQYSWPNDKDPVVVFPPTMTFAEVLATYGTDKPDTRF          GMKIIDISDVFRN          TEIGFLQDALS KPHGTVKAIC IPEGAKYLKRKDIESIRNF          AADHFNQEIL          PVFLNANRNWN SPVANFIMESQRLELIRLMETQEEDV          VLLTAGEHNKACS          LLGKLRLECADLLETRGVVLRDPTLFSFLWVVD FPLFL          PKEENPRELESA          HHPFTAPHPSDIHL LYTEPKKARSQH YDLVLNGNEIGG          GSIRIHNAELQR          YLATLLKEDVKMLSHLLQALDYGAPPHGGIALGLDRLI          CLVTGSPSIRD          VIAFPKSFRGHDLMSNTPD SVPPEELKPYHIRVSKPTD          SKAERAH</p>
-----------------	--

<b>Amino acids</b>	1 to 645
<b>Tags</b>	GST tag N-Terminus

## Specifications

---

Our [Abpromise guarantee](#) covers the use of **ab162989** in the following tested applications.

The application notes include recommended starting dilutions; optimal dilutions/concentrations should be determined by the end user.

<b>Applications</b>	Western blot ELISA
<b>Form</b>	Liquid
<b>Additional notes</b>	Protein concentration is above or equal to 0.05 mg/ml.

## Preparation and Storage

---

<b>Stability and Storage</b>	Shipped on dry ice. Upon delivery aliquot and store at -80°C. Avoid freeze / thaw cycles. pH: 8.00 Constituents: 0.31% Glutathione, 0.79% Tris HCl
------------------------------	--

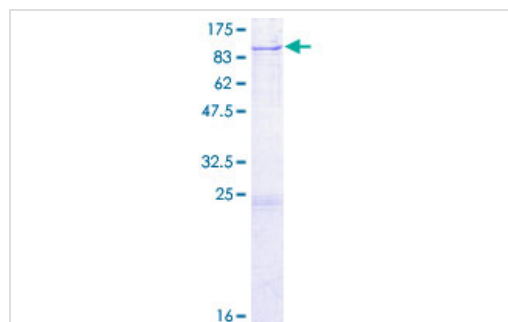
## General Info

---

<b>Relevance</b>	Disease: Leukoencephalopathy with brainstem and spinal cord involvement and lactate elevation Similarity: Belongs to the class-II aminoacyl-tRNA synthetase family.
<b>Cellular localization</b>	Mitochondrion matrix.

## Images

---



ab162989 on a 12.5% SDS-PAGE stained with Coomassie Blue.

SDS-PAGE - Recombinant Human DARS2 protein  
(ab162989)

**Please note:** All products are "FOR RESEARCH USE ONLY AND ARE NOT INTENDED FOR DIAGNOSTIC OR THERAPEUTIC USE"

## Our Abpromise to you: Quality guaranteed and expert technical support

---

- Replacement or refund for products not performing as stated on the datasheet

- Valid for 12 months from date of delivery
- Response to your inquiry within 24 hours
  
- We provide support in Chinese, English, French, German, Japanese and Spanish
- Extensive multi-media technical resources to help you
- We investigate all quality concerns to ensure our products perform to the highest standards

If the product does not perform as described on this datasheet, we will offer a refund or replacement. For full details of the Abpromise, please visit <https://www.abcam.com/abpromise> or contact our technical team.

### **Terms and conditions**

---

- Guarantee only valid for products bought direct from Abcam or one of our authorized distributors