

Product datasheet

Recombinant Human DAZAP1 protein ab162002

1 Image

Overview

Product name	Recombinant Human DAZAP1 protein
Protein length	Full length protein

Description

Nature	Recombinant
Source	Wheat germ
Amino Acid Sequence	
Species	Human
Sequence	<p>MNNSGADEIGKLFVGGLDWSTTQETLRSYFSQYGEVV DCVIMKDKTTNQS RGFVFKFKDPNCVGTVLASRPHTLDGRNIDPKPCTP RGMQPERTRPKEG WQKGPRSDNSKSNKIFVGGIPHNCGETELREYFKKFG VVTEVVMYDAEK QRPRGFGFITFEDEQSVDQAVNMHFHDIMGKKVEVKR AEPRDSKSQAPGQ PGASQWGSRVVPNAANGWAGQPPPTWQQGYGPQG MWVPAGQAIGGYGPPP AGRGAPPPPPFTSYIVSTPPGGFPPPQGFPPQGYGAP PQFSFGYGPPPPP PDQFAPPGVPPPPATPGAAPLAFPPPPSQAAPDMSK PPTAQPDFPYGQYA GYGQDLSGFGQGFSDPSQQPPSYGGPSVPGSGGPP AGGSGFGRGQNHVQGFHPYRR</p>
Amino acids	1 to 407
Tags	GST tag N-Terminus

Specifications

Our [Abpromise guarantee](#) covers the use of **ab162002** in the following tested applications.
 The application notes include recommended starting dilutions; optimal dilutions/concentrations should be determined by the end user.

Applications	Western blot
---------------------	--------------

	ELISA
Form	Liquid
Additional notes	Protein concentration is above or equal to 0.05 mg/ml.

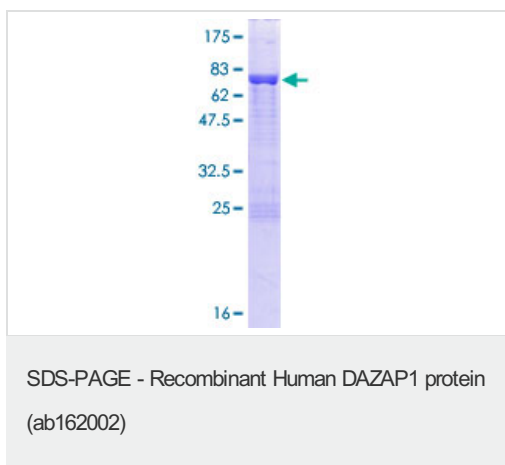
Preparation and Storage

Stability and Storage	Shipped on dry ice. Upon delivery aliquot and store at -80°C. Avoid freeze / thaw cycles. pH: 8.00 Constituents: 0.31% Glutathione, 0.79% Tris HCl
------------------------------	--

General Info

Function	RNA-binding protein, which may be required during spermatogenesis.
Tissue specificity	Mainly expressed in testis. Expressed to a lower level in thymus. Weakly or not expressed in heart, liver, brain, placenta, lung, skeletal muscle, kidney and pancreas.
Sequence similarities	Contains 2 RRM (RNA recognition motif) domains.
Post-translational modifications	Phosphorylated upon DNA damage, probably by ATM or ATR.
Cellular localization	Cytoplasm. Nucleus. Predominantly cytoplasmic (By similarity). Nuclear at some stages of spermatozoides development. In midpachytene spermatocytes, it is localized in both the cytoplasm and the nuclei and is clearly excluded from the sex vesicles. In round spermatids, it localizes mainly in the nuclei, whereas in elongated spermatids, it localizes to the cytoplasm.

Images



ab162002 on a 12.5% SDS-PAGE stained with Coomassie Blue.

Please note: All products are "FOR RESEARCH USE ONLY AND ARE NOT INTENDED FOR DIAGNOSTIC OR THERAPEUTIC USE"

Our Abpromise to you: Quality guaranteed and expert technical support

- Replacement or refund for products not performing as stated on the datasheet
- Valid for 12 months from date of delivery

- Response to your inquiry within 24 hours
- We provide support in Chinese, English, French, German, Japanese and Spanish
- Extensive multi-media technical resources to help you
- We investigate all quality concerns to ensure our products perform to the highest standards

If the product does not perform as described on this datasheet, we will offer a refund or replacement. For full details of the Abpromise, please visit <https://www.abcam.com/abpromise> or contact our technical team.

Terms and conditions

- Guarantee only valid for products bought direct from Abcam or one of our authorized distributors