

Product datasheet

Recombinant Human DDX10 protein ab158271

1 Image

Overview

Product name	Recombinant Human DDX10 protein
Protein length	Full length protein

Description

Nature	Recombinant
Source	Wheat germ
Amino Acid Sequence	
Species	Human

Sequence	<p>MGKTANSPGSGARPDVRSFNWKKKHSHRQNKKK QLRKQLKKPEWQVER ESISRLMQNYEKINVNEITRFSDPFLSKKTLKGLQEAQY RLVTEIQKQTI GLALQGKDVLGAAKTGSGKTLAFLVPVLEALYRLQWT STDGLGVLIISPT RELAYQTFEVLRKVGKNHDFSAGLIIGGKDLKHEAERIN NINILVCTPGR LLQHMDETVSFHATDLQMLVLDEADRILDMGFADTMN AVIENLPKKRQTL LFSATQTKSVKDLARLSLKNPEYVWVHEKAKYSTPAT LEQNYVCELQQK ISVLYSFLRSHLKKKSMFFSSCKEVQYLYRVFCRLRPG VSILALHGRQQ QMRRMEVYNEFVRKRAAVLFATDIAARGLDFAVNWW LQFDCPEDANTYI HRAGRTARYKEDGEALLILLPSEKAMVQQLLQKKVPV KEIKINPEKLIDV QKKLESILAQDQDLKERAQRCFVSVRSVYLMKDKEV FDVSKLPIPEYAL SLGLAVAPRVRFLQKMQKQPTKELVRSQADKVIEPRA PSLTNDVEVEEFRA YFNEKMSILQGGKRLEGTEHRQDNDTGNEEQEEEEED DEEEMEEKLAKAK GSQAPSLPNTSEAQKIKEVPTQFLDRDEEEEDADFLK VKRHNVFGLDLKD</p>
-----------------	--

EKTLQKKEPSKSSIKKKMTKVAEAKKVMKRNFKVNKKI
TFTDEGELVQQW
PQMQKSAIKDAEEDDDTGGINLHKAKERLQEEDKFDK
EEYRKKIKAKHRE
KRLKEREARREANKRQAKAKDEEEAFLDWSDDDDD
DDDGFDPLPDPDK
YRSESDSDSEDMENKISDTKKKQGMKKRSNSEVEDV
GPTSHNRKKARWDT
LEPLDTGLSLAEDEELVLHLLRSQS

Amino acids 1 to 875
Tags proprietary tag N-Terminus

Specifications

Our [Abpromise guarantee](#) covers the use of **ab158271** in the following tested applications.

The application notes include recommended starting dilutions; optimal dilutions/concentrations should be determined by the end user.

Applications ELISA
Western blot

Form Liquid

Additional notes Protein concentration is above or equal to 0.05 mg/ml.

Preparation and Storage

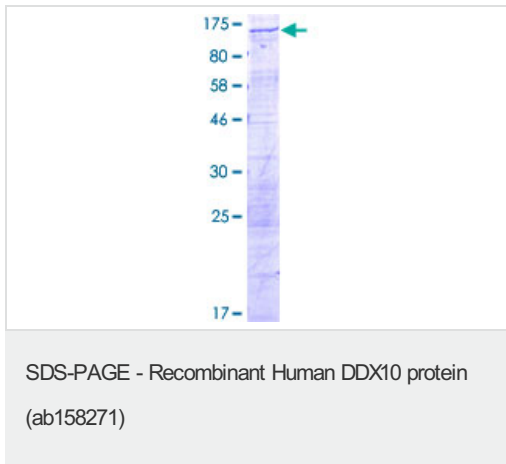
Stability and Storage Shipped on dry ice. Upon delivery aliquot and store at -80°C. Avoid freeze / thaw cycles.
pH: 8.00
Constituents: 0.31% Glutathione, 0.79% Tris HCl

General Info

Relevance DEAD box proteins, characterized by the conserved motif Asp-Glu-Ala-Asp (DEAD), are putative RNA helicases. They are implicated in a number of cellular processes involving alteration of RNA secondary structure such as translation initiation, nuclear and mitochondrial splicing, and ribosome and spliceosome assembly. Based on their distribution patterns, some members of this family are believed to be involved in embryogenesis, spermatogenesis, and cellular growth and division. This gene encodes a DEAD box protein DDX10.

Cellular localization Nuclear

Images



ab158271 on a 12.5% SDS-PAGE stained with Coomassie Blue.

Please note: All products are "FOR RESEARCH USE ONLY AND ARE NOT INTENDED FOR DIAGNOSTIC OR THERAPEUTIC USE"

Our Abpromise to you: Quality guaranteed and expert technical support

- Replacement or refund for products not performing as stated on the datasheet
- Valid for 12 months from date of delivery
- Response to your inquiry within 24 hours
- We provide support in Chinese, English, French, German, Japanese and Spanish
- Extensive multi-media technical resources to help you
- We investigate all quality concerns to ensure our products perform to the highest standards

If the product does not perform as described on this datasheet, we will offer a refund or replacement. For full details of the Abpromise, please visit <https://www.abcam.com/abpromise> or contact our technical team.

Terms and conditions

- Guarantee only valid for products bought direct from Abcam or one of our authorized distributors