

Product datasheet

Recombinant Human DDX50 protein ab132541

1 Image

Overview

<b>Product name</b>	Recombinant Human DDX50 protein
<b>Protein length</b>	Full length protein

Description

<b>Nature</b>	Recombinant
<b>Source</b>	Wheat germ
<b>Amino Acid Sequence</b>	
<b>Accession</b>	<a href="#">Q9BQ39</a>
<b>Species</b>	Human

Sequence

MPGKLLWGDIMELEAPLEESQKKERQKSDRRKSR  
 HHYDSDEKSETREN  
 GVTDDLDPKAKKSKMKEKLNKDTEEGFNRLSDEFS  
 KSHKSRRKDLPNGD  
 IDEYEKSKRVSSLDTSTHKSSDNKLEETLTREQKEGA  
 FSNFPISEETIK  
 LLKGRGVTYLFPVQVKTGFPVYEGKDIAQARTGTGKTF  
 SFAIPLIERLQ  
 RNQETIKKSRSPKVLVLAPTRELANQVAKDFKDITRKL  
 SVACFYGGTSYQ  
 SQINHIRNGIDILVGTGPRIKDHLQSGRLDLSKLRHVVD  
 EVDQMLDLGF  
 AEQVEDIIHESYKTDSEDNPQTLIFSATCPQWVYKVAK  
 KYMKSRYEQVDL  
 VGKMTQKAATTVEHLAIQCHWSQRPAVIGDVLQVYSG  
 SEGRAIIFCETKK  
 NVTEMAMNPHIKQNAQCLHGDIASQREITLKGFRREGS  
 FKVLVATNVAAR  
 GLDIPEVDLVIQSSPPQDVESYIHRSGRTGRAGRTGICI  
 CFYQPRERGQL  
 RYVEQKAGITFKRVGVPSTMDLVKSKSMDAIRSLASVS  
 YAAVDFFRPSAQ  
 RLIEEKGAVDALAAALAHISGASSFEPRSLITSDKGFVT  
 MTLESLEEQD  
 VSCAWKELNRKLSSNAVSQITRMCLLKGNMGVCFDV

PTTESERLQAEWHD  
SDWILSVPAKLPEIEEYDGTSSNSRQRSGWSSGRS  
GRSGRSGGRSGGR  
SGRQSRQGSRSRSGSRQDGRRRSGNRNRSRSGGHKRS  
FD

**Molecular weight** 109 kDa including tags  
**Amino acids** 1 to 737

## Specifications

---

Our [Abpromise guarantee](#) covers the use of **ab132541** in the following tested applications.

The application notes include recommended starting dilutions; optimal dilutions/concentrations should be determined by the end user.

**Applications** Western blot  
SDS-PAGE  
ELISA

**Form** Liquid

**Additional notes** Protein concentration is above or equal to 0.05 µg/µl.

## Preparation and Storage

---

**Stability and Storage** Shipped on dry ice. Upon delivery aliquot and store at -80°C. Avoid freeze / thaw cycles.  
pH: 8.00  
Constituents: 0.31% Glutathione, 0.79% Tris HCl

## General Info

---

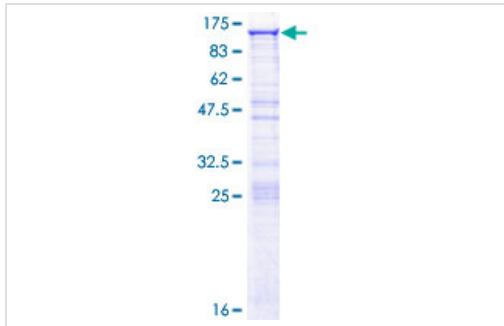
**Sequence similarities** Belongs to the DEAD box helicase family. DDX21/DDX50 subfamily.  
Contains 1 helicase ATP-binding domain.  
Contains 1 helicase C-terminal domain.

**Cellular localization** Nucleus > nucleolus.

---

## Images

---



12.5% SDS-PAGE Stained with Coomassie Blue.

SDS-PAGE - Recombinant Human DDX50 protein  
(ab132541)

**Please note:** All products are "FOR RESEARCH USE ONLY. NOT FOR USE IN DIAGNOSTIC PROCEDURES"

### Our Abpromise to you: Quality guaranteed and expert technical support

---

- Replacement or refund for products not performing as stated on the datasheet
- Valid for 12 months from date of delivery
- Response to your inquiry within 24 hours
- We provide support in Chinese, English, French, German, Japanese and Spanish
- Extensive multi-media technical resources to help you
- We investigate all quality concerns to ensure our products perform to the highest standards

If the product does not perform as described on this datasheet, we will offer a refund or replacement. For full details of the Abpromise, please visit <https://www.abcam.com/abpromise> or contact our technical team.

### Terms and conditions

---

- Guarantee only valid for products bought direct from Abcam or one of our authorized distributors