

Product datasheet

Recombinant Human DERL1/Derlin-1 protein ab163984

1 Image

Description

Product name	Recombinant Human DERL1/Derlin-1 protein	
Expression system	Wheat germ	
Protein length	Full length protein	
Animal free	No	
Nature	Recombinant	
Species	Human	
Sequence	MSDIGDWFRSIPAITRYWFAATVAVPLVGKLGKGLISPAYLFL WPEAFLYRF QWRPITATFYFPVGPPTGFLYLVNLYFLYQYSTRLETGAFD GRPADYLF MLLFNWICMITGLAMDMQLLMIPLIMSVLYVWAQLNRDMIV SFWFGTRF KACYLPWWILGFNYIGGSVINELIGNLVGHLYFFLMFRYPMD LGGRNFL STPQFLYRWLPSRRGGVSGFGVPPASMRRRAADQNGGGG RHNWGQGFRLGD Q	
Amino acids	1 to 251	
Tags	GST tag N-Terminus	

Specifications

Our [Abpromise guarantee](#) covers the use of **ab163984** in the following tested applications.

The application notes include recommended starting dilutions; optimal dilutions/concentrations should be determined by the end user.

Applications	ELISA
	Western blot
Form	Liquid
Additional notes	This product was previously labelled as DERL1.

Preparation and Storage

Stability and Storage

Shipped on dry ice. Upon delivery aliquot and store at -80°C. Avoid freeze / thaw cycles.

pH: 8.00

Constituents: 0.31% Glutathione, 0.79% Tris HCl

General Info

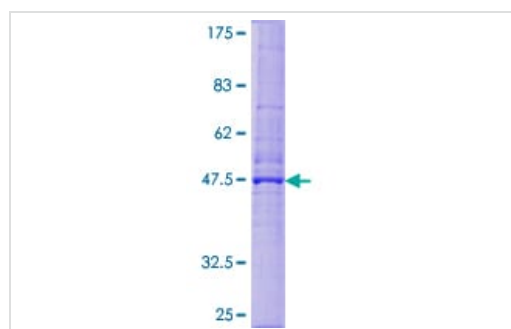
Relevance

Derlin 1 is a channel-like protein found in the endoplasmic reticulum (ER) membrane. It is specifically required for the degradation of misfolded ER luminal proteins. Derlin 1 participates in the transfer of misfolded proteins from the ER to the cytosol, where they are destroyed by the proteasome in a ubiquitin-dependent manner. It may act by forming a channel that allows the retrotranslocation of misfolded proteins into the cytosol and then transferring them to the ATPase VCP complex, which translocates and ubiquitinates misfolded proteins. In the case of infection by cytomegaloviruses, derlin 1 plays a central role in export from the ER and subsequent degradation of MHC class I heavy chains via its interaction with US11 viral protein, which recognizes and associates with MHC class I heavy chains. Derlin 1 also participates in the degradation of misfolded cytomegalovirus US2 protein.

Cellular localization

Endoplasmic reticulum; multi pass membrane protein.

Images



ab163984 on a 12.5% SDS-PAGE stained with Coomassie Blue.

SDS-PAGE - Recombinant Human DERL1/Derlin-1 protein (ab163984)

Please note: All products are "FOR RESEARCH USE ONLY. NOT FOR USE IN DIAGNOSTIC PROCEDURES"

Our Abpromise to you: Quality guaranteed and expert technical support

- Replacement or refund for products not performing as stated on the datasheet
- Valid for 12 months from date of delivery
- Response to your inquiry within 24 hours
- We provide support in Chinese, English, French, German, Japanese and Spanish
- Extensive multi-media technical resources to help you
- We investigate all quality concerns to ensure our products perform to the highest standards

If the product does not perform as described on this datasheet, we will offer a refund or replacement. For full details of the Abpromise,

please visit <https://www.abcam.com/abpromise> or contact our technical team.

Terms and conditions

- Guarantee only valid for products bought direct from Abcam or one of our authorized distributors