

Product datasheet

Recombinant Human DLL1 protein ab162166

1 Image

Overview

| | |
|-----------------------|--------------------------------|
| Product name | Recombinant Human DLL1 protein |
| Protein length | Protein fragment |

Description

| | |
|----------------------------|--|
| Nature | Recombinant |
| Source | Wheat germ |
| Amino Acid Sequence | |
| Species | Human |
| Sequence | QVWSSGVFELKLQEFVNKKGLLGNRNCCRGGAGPPP CACRTFFRVCLKHY QASVSPEPPCTYGSAVTPVLGVDSFSLPDGGGADSA FSNPIR |
| Amino acids | 18 to 109 |
| Tags | GST tag N-Terminus |

Specifications

Our [Abpromise guarantee](#) covers the use of **ab162166** in the following tested applications.

The application notes include recommended starting dilutions; optimal dilutions/concentrations should be determined by the end user.

| | |
|-------------------------|--|
| Applications | ELISA Western blot |
| Form | Liquid |
| Additional notes | Protein concentration is above or equal to 0.05 mg/ml. |

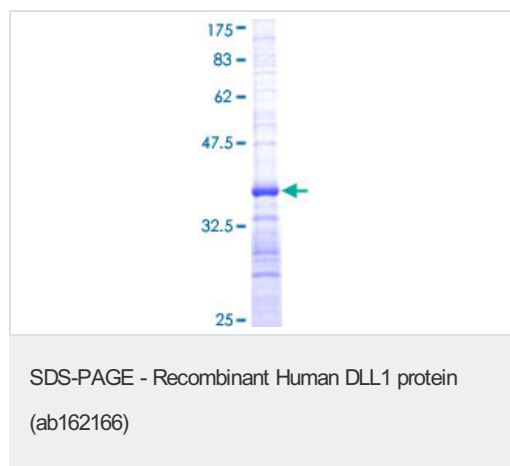
Preparation and Storage

| | |
|------------------------------|--|
| Stability and Storage | Shipped on dry ice. Upon delivery aliquot and store at -80°C. Avoid freeze / thaw cycles. pH: 8.00 Constituents: 0.31% Glutathione, 0.79% Tris HCl |
|------------------------------|--|

General Info

| | |
|---|---|
| Function | Acts as a ligand for Notch receptors. Blocks the differentiation of progenitor cells into the B-cell lineage while promoting the emergence of a population of cells with the characteristics of a T-cell/NK-cell precursor. |
| Tissue specificity | Expressed in heart and pancreas, with lower expression in brain and muscle and almost no expression in placenta, lung, liver and kidney. |
| Sequence similarities | Contains 1 DSL domain. Contains 8 EGF-like domains. |
| Post-translational modifications | Ubiquitinated by MIB (MIB1 or MIB2), leading to its endocytosis and subsequent degradation. |
| Cellular localization | Membrane. |

Images



ab162166 on a 12.5% SDS-PAGE stained with Coomassie Blue.

Please note: All products are "FOR RESEARCH USE ONLY AND ARE NOT INTENDED FOR DIAGNOSTIC OR THERAPEUTIC USE"

Our Abpromise to you: Quality guaranteed and expert technical support

- Replacement or refund for products not performing as stated on the datasheet
- Valid for 12 months from date of delivery
- Response to your inquiry within 24 hours
- We provide support in Chinese, English, French, German, Japanese and Spanish
- Extensive multi-media technical resources to help you
- We investigate all quality concerns to ensure our products perform to the highest standards

If the product does not perform as described on this datasheet, we will offer a refund or replacement. For full details of the Abpromise, please visit <https://www.abcam.com/abpromise> or contact our technical team.

Terms and conditions

- Guarantee only valid for products bought direct from Abcam or one of our authorized distributors