

## Product datasheet

# Recombinant Human DNALI1 protein ab176067

1 Image

### Overview

<b>Product name</b>	Recombinant Human DNALI1 protein
<b>Protein length</b>	Full length protein

### Description

<b>Nature</b>	Recombinant
<b>Source</b>	Escherichia coli
<b>Amino Acid Sequence</b>	
<b>Accession</b>	<a href="#">NP_003453</a>
<b>Species</b>	Human

<b>Sequence</b>	<p>MGSSHHHHHH SSSLVPRGSH MGSMVTANKA          HTGQGSCWVA TLASAMIPPA DSLLKYDTPV          LVSRNTEKRS PKARLLKVSP QQPGPSGSAP          QPPKTKLPST PCVPDPTKQA EEILNAILPP          REWVEDTQLW IQQVSSTPST RMDVVHLQEQ          LDLKLQQRQA RETGICPVRR ELYSQCFDEL          IREVTINCAE RGLLLLRVRD EIRMTIAAYQ          TLYESSVAFG MRKALQAEQG KSDMERKIAE          LETEKRDLER QVNEQKAKCE ATEKRESERR          QVEEKHNEE IQFLKRTNQQ LKAQLEGIA PPK</p>
-----------------	---

<b>Molecular weight</b>	34 kDa including tags
<b>Amino acids</b>	1 to 280
<b>Tags</b>	His tag N-Terminus

### Specifications

Our [Abpromise guarantee](#) covers the use of **ab176067** in the following tested applications.

The application notes include recommended starting dilutions; optimal dilutions/concentrations should be determined by the end user.

<b>Applications</b>	<p>SDS-PAGE</p> <p>Mass Spectrometry</p>
<b>Mass spectrometry</b>	MALDI-TOF
<b>Purity</b>	>90% by SDS-PAGE.

**Form** Liquid

## Preparation and Storage

**Stability and Storage** Shipped at 4°C. Store at +4°C short term (1-2 weeks). Upon delivery aliquot. Store at -20°C or -80°C. Avoid freeze / thaw cycle.

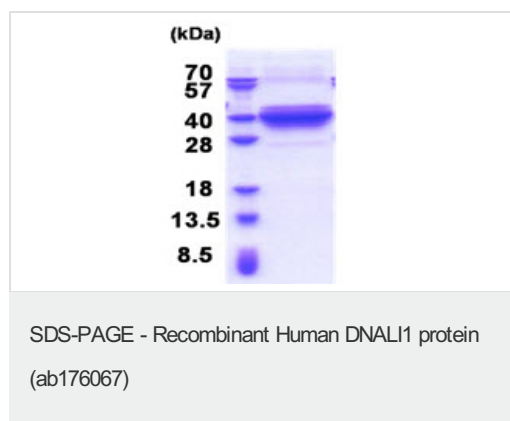
## General Info

**Function** May play a dynamic role in flagellar motility.

**Tissue specificity** Expressed in many tissues. A smaller 0.9 kb and a larger 2.5 kb transcripts were detected at the highest level in the testis, at medium levels in the prostate, heart, liver, lung and pancreas, at low levels in the ovary, skeletal muscle and small intestine. Not detected in spleen, colon epithelium, thymus or peripheral blood leukocytes. The 0.9 kb transcript is expressed at a 20-fold higher level than the 2.5 kb transcript in the testis.

**Sequence similarities** Belongs to the inner dynein arm light chain family.

## Images



15% SDS-PAGE analysis of ab176067 (3µg).

**Please note:** All products are "FOR RESEARCH USE ONLY AND ARE NOT INTENDED FOR DIAGNOSTIC OR THERAPEUTIC USE"

## Our Abpromise to you: Quality guaranteed and expert technical support

- Replacement or refund for products not performing as stated on the datasheet
- Valid for 12 months from date of delivery
- Response to your inquiry within 24 hours
- We provide support in Chinese, English, French, German, Japanese and Spanish
- Extensive multi-media technical resources to help you
- We investigate all quality concerns to ensure our products perform to the highest standards

If the product does not perform as described on this datasheet, we will offer a refund or replacement. For full details of the Abpromise, please visit <https://www.abcam.com/abpromise> or contact our technical team.

## Terms and conditions

---

- Guarantee only valid for products bought direct from Abcam or one of our authorized distributors