

Product datasheet

Recombinant Human DORFIN protein ab161828

1 Image

Overview

Product name	Recombinant Human DORFIN protein
Protein length	Protein fragment

Description

Nature	Recombinant
Source	Wheat germ
Amino Acid Sequence	
Species	Human
Sequence	MKTSCSHGSSDYHTRFATVNILPEVENDRLENSPHQC SISVVTQTASCSE VSQLNHIAEEHGNNGIKPNVDLYFGDALKETNNNHS HQ TMELKVAIQTE
Amino acids	739 to 837
Tags	GST tag N-Terminus

Specifications

Our [Abpromise guarantee](#) covers the use of **ab161828** in the following tested applications. The application notes include recommended starting dilutions; optimal dilutions/concentrations should be determined by the end user.

Applications	ELISA Western blot
Form	Liquid
Additional notes	Protein concentration is above or equal to 0.05 mg/ml.

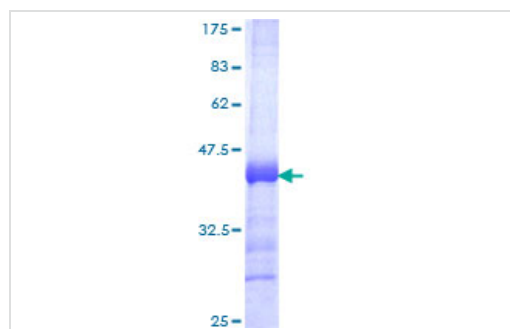
Preparation and Storage

Stability and Storage	Shipped on dry ice. Upon delivery aliquot and store at -80°C. Avoid freeze / thaw cycles. pH: 8.00 Constituents: 0.31% Glutathione, 0.79% Tris HCl
------------------------------	--

General Info

Function	E3 ubiquitin-protein ligase which accepts ubiquitin from E2 ubiquitin-conjugating enzymes UBE2L3 and UBE2L6 in the form of a thioester and then directly transfers the ubiquitin to targeted substrates, such as SNCAIP or CASR. Specifically ubiquitinates pathogenic SOD1 variants, which leads to their proteasomal degradation and to neuronal protection.
Tissue specificity	Widely expressed, with highest levels in heart. Ubiquitously expressed in the central nervous system.
Pathway	Protein modification; protein ubiquitination.
Sequence similarities	Belongs to the RBR family. RNF19 subfamily. Contains 1 IBR-type zinc finger. Contains 2 RING-type zinc fingers.
Post-translational modifications	Phosphorylated upon DNA damage, probably by ATM or ATR.
Cellular localization	Membrane. Cytoplasm > cytoskeleton > centrosome. Present in the hyaline inclusion bodies specifically found in motor neurons from amyotrophic lateral sclerosis patients. Present in the Lewy bodies specifically found in neurons from Parkinson disease patients.

Images



SDS-PAGE - Recombinant Human DORFIN protein
(ab161828)

ab161828 on a 12.5% SDS-PAGE stained with Coomassie Blue.

Please note: All products are "FOR RESEARCH USE ONLY AND ARE NOT INTENDED FOR DIAGNOSTIC OR THERAPEUTIC USE"

Our Abpromise to you: Quality guaranteed and expert technical support

- Replacement or refund for products not performing as stated on the datasheet
- Valid for 12 months from date of delivery
- Response to your inquiry within 24 hours

- We provide support in Chinese, English, French, German, Japanese and Spanish
- Extensive multi-media technical resources to help you
- We investigate all quality concerns to ensure our products perform to the highest standards

If the product does not perform as described on this datasheet, we will offer a refund or replacement. For full details of the Abpromise, please visit <https://www.abcam.com/abpromise> or contact our technical team.

Terms and conditions

- Guarantee only valid for products bought direct from Abcam or one of our authorized distributors