

Product datasheet

Recombinant Human DSCAML1 protein ab163552

1 Image

Description

Product name	Recombinant Human DSCAML1 protein	
Expression system	Wheat germ	
Protein length	Protein fragment	
Animal free	No	
Nature	Recombinant	
Species	Human	
Sequence	SEPGICRFTASPPKPQDADRGKNVAVPIPHRANKSDYCNL PLYAKSEAFF RKADGREPCPVVPPREASIRNLARTYHTQARHLTLDP	
Amino acids	1922 to 2008	
Tags	GST tag N-Terminus	

Specifications

Our [Abpromise guarantee](#) covers the use of **ab163552** in the following tested applications.

The application notes include recommended starting dilutions; optimal dilutions/concentrations should be determined by the end user.

Applications	ELISA Western blot
Form	Liquid
Additional notes	

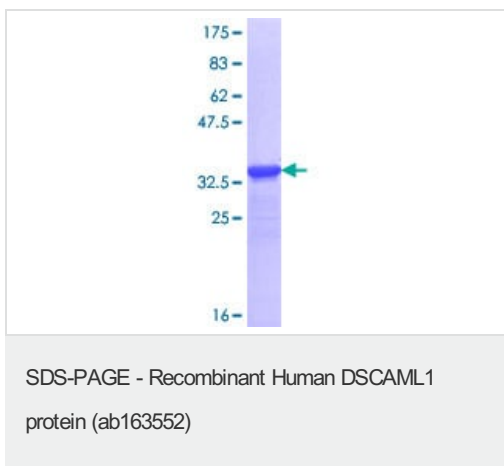
Preparation and Storage

Stability and Storage	Shipped on dry ice. Upon delivery aliquot and store at -80°C. Avoid freeze / thaw cycles. pH: 8.00 Constituents: 0.31% Glutathione, 0.79% Tris HCl
------------------------------	--

General Info

Function	Cell adhesion molecule that plays a role in neuronal self-avoidance. Promotes repulsion between specific neuronal processes of either the same cell or the same subtype of cells. Promotes both isoneuronal self-avoidance for creating an orderly neurite arborization in retinal rod bipolar cells and heteroneuronal self-avoidance to maintain mosaic spacing between All amacrine cells.
Tissue specificity	Detected in heart, liver, pancreas, skeletal muscle, kidney and in brain, in particular in the amygdala, caudate nucleus, corpus callosum, hippocampus, substantia nigra, thalamus and subthalamus.
Sequence similarities	Contains 6 fibronectin type-III domains. Contains 10 Ig-like C2-type (immunoglobulin-like) domains.
Cellular localization	Cell membrane.

Images



ab163552 on a 12.5% SDS-PAGE stained with Coomassie Blue.

Please note: All products are "FOR RESEARCH USE ONLY. NOT FOR USE IN DIAGNOSTIC PROCEDURES"

Our Abpromise to you: Quality guaranteed and expert technical support

- Replacement or refund for products not performing as stated on the datasheet
- Valid for 12 months from date of delivery
- Response to your inquiry within 24 hours
- We provide support in Chinese, English, French, German, Japanese and Spanish
- Extensive multi-media technical resources to help you
- We investigate all quality concerns to ensure our products perform to the highest standards

If the product does not perform as described on this datasheet, we will offer a refund or replacement. For full details of the Abpromise, please visit <https://www.abcam.com/abpromise> or contact our technical team.

Terms and conditions

- Guarantee only valid for products bought direct from Abcam or one of our authorized distributors