

Product datasheet

Recombinant Human DYNC1LI2/LIC2 protein ab158301

1 Image

Description

Product name	Recombinant Human DYNC1LI2/LIC2 protein	
Expression system	Wheat germ	
Protein length	Full length protein	
Animal free	No	
Nature	Recombinant	
Species	Human	
Sequence	<pre> MAPVGVVEKLLLLGPNPVAVAAAGDLTSEEEEGQSLWSSI LSEVSTRARSK LPSGKNILVFGEDGSGKTTLMTKLQGAEHGKKGRGLELY LSVHDEDRDD HTRCNVWILDGDLYHKGLLKFAVSAESLPETLVIFVADMS RPWTVMESLQ KVASVLRHIDKMKIPPEKMRELERKFVKDFQDYMEPEE GCQGSPQRRGP LTSGSDEENVALPLGDNVLTHNLGIPVLVVCTKCDASVSL EKEHDYRDEH LDFIQSHLRRFCLQYGAALIYTSVKEEKNDLLYKYVHKTY GFHFHTPA LVVEKDAVFIPAGWDNEKKIALHENFTTVKPEDAYEDFM KPPVRKLVH DKELAAEDEQVFLMKQQSLLAKQPATPTRASESPARGPS GSPRTQGRGGP ASVPSSSPGTSVKKPDPNIKNAASEGVLASFFNSLLSKK TGSPGSPGAG GVQSTAKNSGQKTVLSNVQEELDRMTRKPDSMVTNSST ENEA </pre>	
Amino acids	1 to 492	
Tags	GST tag N-Terminus	

Specifications

Our [Abpromise guarantee](#) covers the use of **ab158301** in the following tested applications.

The application notes include recommended starting dilutions; optimal dilutions/concentrations should be determined by the end user.

Applications	ELISA Western blot
Form	Liquid
Additional notes	This product was previously labelled as DYNC1LI2.

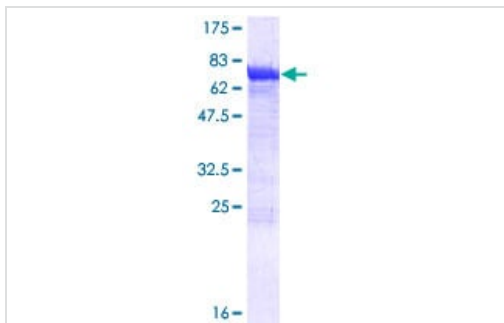
Preparation and Storage

Stability and Storage	Shipped on dry ice. Upon delivery aliquot and store at -80°C. Avoid freeze / thaw cycles. pH: 8.00 Constituents: 0.31% Glutathione, 0.79% Tris HCl
------------------------------	--

General Info

Function	Acts as one of several non-catalytic accessory components of the cytoplasmic dynein 1 complex that are thought to be involved in linking dynein to cargos and to adapter proteins that regulate dynein function. Cytoplasmic dynein 1 acts as a motor for the intracellular retrograde motility of vesicles and organelles along microtubules. May play a role in binding dynein to membranous organelles or chromosomes.
Sequence similarities	Belongs to the dynein light intermediate chain family.
Cellular localization	Cytoplasm > cytoskeleton.

Images



SDS-PAGE - Recombinant Human DYNC1LI2/LIC2 protein (ab158301)

ab158301 on a 12.5% SDS-PAGE stained with Coomassie Blue.

Please note: All products are "FOR RESEARCH USE ONLY. NOT FOR USE IN DIAGNOSTIC PROCEDURES"

Our Abpromise to you: Quality guaranteed and expert technical support

- Replacement or refund for products not performing as stated on the datasheet
- Valid for 12 months from date of delivery
- Response to your inquiry within 24 hours

- We provide support in Chinese, English, French, German, Japanese and Spanish
- Extensive multi-media technical resources to help you
- We investigate all quality concerns to ensure our products perform to the highest standards

If the product does not perform as described on this datasheet, we will offer a refund or replacement. For full details of the Abpromise, please visit <https://www.abcam.com/abpromise> or contact our technical team.

Terms and conditions

- Guarantee only valid for products bought direct from Abcam or one of our authorized distributors