

Product datasheet

Recombinant Human E2F2 protein ab114610

1 Image

Description

Product name	Recombinant Human E2F2 protein	
Expression system	Wheat germ	
Accession	Q96ID7	
Protein length	Full length protein	
Animal free	No	
Nature	Recombinant	
Species	Human	
Sequence	MESRSVAQAGVQWPDLGSLQPLPPRFKRFFCLSLQSSW DYRHAPPRPANF VFLVETGFCHVSQAGLELLTSSDPPRPPKVLK	
Predicted molecular weight	35 kDa including tags	
Amino acids	1 to 83	

Specifications

Our [Abpromise guarantee](#) covers the use of **ab114610** in the following tested applications.

The application notes include recommended starting dilutions; optimal dilutions/concentrations should be determined by the end user.

Applications	ELISA
	SDS-PAGE
	Western blot

Form	Liquid
-------------	--------

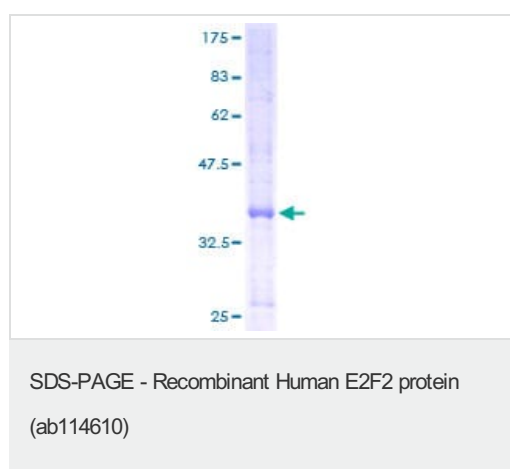
Preparation and Storage

Stability and Storage	Shipped on dry ice. Upon delivery aliquot and store at -80°C. Avoid freeze / thaw cycles. pH: 8.00 Constituents: 0.3% Glutathione, 0.79% Tris HCl
------------------------------	---

General Info

Function	Transcription activator that binds DNA cooperatively with DP proteins through the E2 recognition site, 5'-TTTC[CG]CGC-3' found in the promoter region of a number of genes whose products are involved in cell cycle regulation or in DNA replication. The DRTF1/E2F complex functions in the control of cell-cycle progression from g1 to s phase. E2F-2 binds specifically to RB1 protein, in a cell-cycle dependent manner.
Tissue specificity	Highest level of expression is found in placenta, low levels are found in lung. Found as well in many immortalized cell lines derived from tumor samples.
Sequence similarities	Belongs to the E2F/DP family.
Post-translational modifications	Phosphorylated by CDK2 and cyclin A-CDK2 in the S-phase.
Cellular localization	Nucleus.

Images



ab114610 analysed on a 12.5% SDS-PAGE gel stained with Coomassie Blue.

Please note: All products are "FOR RESEARCH USE ONLY. NOT FOR USE IN DIAGNOSTIC PROCEDURES"

Our Abpromise to you: Quality guaranteed and expert technical support

- Replacement or refund for products not performing as stated on the datasheet
- Valid for 12 months from date of delivery
- Response to your inquiry within 24 hours
- We provide support in Chinese, English, French, German, Japanese and Spanish
- Extensive multi-media technical resources to help you
- We investigate all quality concerns to ensure our products perform to the highest standards

If the product does not perform as described on this datasheet, we will offer a refund or replacement. For full details of the Abpromise, please visit <https://www.abcam.com/abpromise> or contact our technical team.

Terms and conditions

- Guarantee only valid for products bought direct from Abcam or one of our authorized distributors