

Product datasheet

Recombinant Human EAAT5 protein ab159518

1 Image

Overview

<b>Product name</b>	Recombinant Human EAAT5 protein
<b>Protein length</b>	Full length protein

Description

<b>Nature</b>	Recombinant
<b>Source</b>	Wheat germ
<b>Amino Acid Sequence</b>	
<b>Species</b>	Human
<b>Sequence</b>	MVPHAILARGRDVCRRNGLLILSVLSVIVGCLLGFFLRT RRLSPQEISYF QFPGELLMRMLKMMILPLVSSLMSGGLASLDAKTSSR LGVLTVAYYLWTT FMAVIVGIFMVSIIHPGSAAQKETTEQSGKPIMSSADAL LDLIRQKEESW RINGPKGPG
<b>Amino acids</b>	1 to 158
<b>Tags</b>	GST tag N-Terminus

Specifications

Our [Abpromise guarantee](#) covers the use of **ab159518** in the following tested applications. The application notes include recommended starting dilutions; optimal dilutions/concentrations should be determined by the end user.

<b>Applications</b>	ELISA Western blot
<b>Form</b>	Liquid
<b>Additional notes</b>	Protein concentration is above or equal to 0.05 mg/ml. This product was previously labelled as SLC1A7

Preparation and Storage

## Stability and Storage

Shipped on dry ice. Upon delivery aliquot and store at -80°C. Avoid freeze / thaw cycles.

pH: 8.00

Constituents: 0.31% Glutathione, 0.79% Tris HCl

## General Info

---

### Function

Transports L-glutamate; the L-glutamate uptake is sodium- and voltage-dependent and chloride-independent. Its associated chloride conductance may participate in visual processing.

### Tissue specificity

Expressed primarily in retina. Detectable in liver, heart, muscle and brain.

### Sequence similarities

Belongs to the dicarboxylate/amino acid:cation symporter (DAACS) (TC 2.A.23) family. SLC1A7 subfamily.

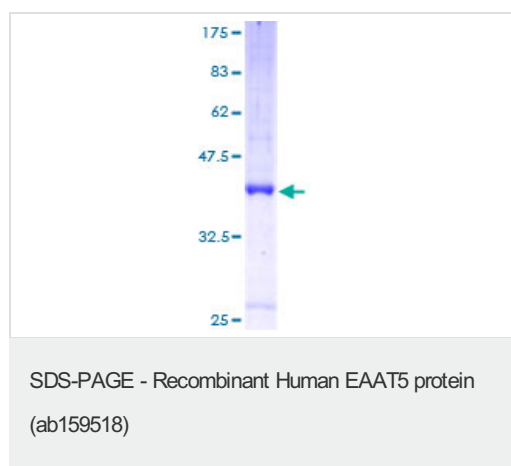
### Cellular localization

Membrane.

---

## Images

---



ab159518 on a 12.5% SDS-PAGE stained with Coomassie Blue.

**Please note:** All products are "FOR RESEARCH USE ONLY AND ARE NOT INTENDED FOR DIAGNOSTIC OR THERAPEUTIC USE"

## Our Abpromise to you: Quality guaranteed and expert technical support

---

- Replacement or refund for products not performing as stated on the datasheet
- Valid for 12 months from date of delivery
- Response to your inquiry within 24 hours
- We provide support in Chinese, English, French, German, Japanese and Spanish
- Extensive multi-media technical resources to help you
- We investigate all quality concerns to ensure our products perform to the highest standards

If the product does not perform as described on this datasheet, we will offer a refund or replacement. For full details of the Abpromise, please visit <https://www.abcam.com/abpromise> or contact our technical team.

## Terms and conditions

---

- Guarantee only valid for products bought direct from Abcam or one of our authorized distributors