

Product datasheet

Recombinant Human ECE2 protein ab132791

1 Image

Overview

Product name	Recombinant Human ECE2 protein
Protein length	Full length protein

Description

Nature	Recombinant
Source	Wheat germ
Amino Acid Sequence	
Accession	O60344-4
Species	Human
Sequence	MASPGAGRAPPPELPERNCGYREVEYWDQRYQGAAD SAPYDWFQDFSSFRA LLEPELRPEDRILVLGCGNSALSIELFLGGFPNVTSD YSSVVVAAMQAR YAHVPQLRWETMDVRKLDFPSASFDDVLEKGTLDALL AGERDPWTVSSEG VHTVDQVLSEVSRVLVPGGRFISMTSAAPHFRTRHYA QAYYGWSLRHATY GSGFHFHLYLMHKGKLSVAQLALGAQLSPRPPTS PCFLQSDHEDFL SAIQL
Molecular weight	55 kDa including tags
Amino acids	1 to 255

Specifications

Our [Abpromise guarantee](#) covers the use of **ab132791** in the following tested applications.

The application notes include recommended starting dilutions; optimal dilutions/concentrations should be determined by the end user.

Applications	SDS-PAGE ELISA Western blot
Form	Liquid
Additional notes	Protein concentration is above or equal to 0.05 mg/ml.

Preparation and Storage

Stability and Storage

Shipped on dry ice. Upon delivery aliquot and store at -80°C. Avoid freeze / thaw cycles.

pH: 8.00

Constituents: 0.31% Glutathione, 0.79% Tris HCl

General Info

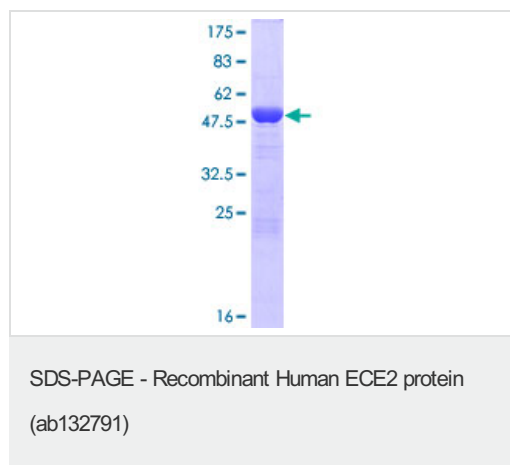
Relevance

Function: Converts big endothelin-1 to endothelin-1. Also involved in the processing of various neuroendocrine peptides, including neurotensin, angiotensin I, substance P, proenkephalin-derived peptides, and prodynorphin-derived peptides. May limit beta-amyloid peptide accumulation in brain. May also have methyltransferase activity. Tissue specificity: Expressed in brain. Strongly down-regulated in inferior parietal lobe from Alzheimer disease patients (at protein level). Similarity: In the N-terminal section; belongs to the methyltransferase superfamily. In the C-terminal section; belongs to the peptidase M13 family.

Cellular localization

Golgi apparatus membrane. Cytoplasmic granule membrane.

Images



12.5% SDS-PAGE analysis of ab132791 stained with Coomassie Blue.

Please note: All products are "FOR RESEARCH USE ONLY. NOT FOR USE IN DIAGNOSTIC PROCEDURES"

Our Abpromise to you: Quality guaranteed and expert technical support

- Replacement or refund for products not performing as stated on the datasheet
- Valid for 12 months from date of delivery
- Response to your inquiry within 24 hours
- We provide support in Chinese, English, French, German, Japanese and Spanish
- Extensive multi-media technical resources to help you
- We investigate all quality concerns to ensure our products perform to the highest standards

If the product does not perform as described on this datasheet, we will offer a refund or replacement. For full details of the Abpromise,

please visit <https://www.abcam.com/abpromise> or contact our technical team.

Terms and conditions

- Guarantee only valid for products bought direct from Abcam or one of our authorized distributors