

Product datasheet

Recombinant Human EHF protein ab161968

1 Image

Description

<b>Product name</b>	Recombinant Human EHF protein
<b>Expression system</b>	Wheat germ
<b>Protein length</b>	Full length protein
<b>Animal free</b>	No
<b>Nature</b>	Recombinant
<b>Species</b>	Human
<b>Sequence</b>	<pre> MILEGGGVMNLPGNLLHQPPAWTDSYSTCNVSSGFFG GQWHEIHPQYW TKYQVWEWLQHLLDTNQLDANCIPFQEFDINGEHLCSMSL QEFTRAAGTA GQLLYSNLQHLKWNGQCSSDLFQSTHNVIVKTEQTEPSIM NTWKDENLY DTNYGSTVDLLDSKTFCRAQISM TTTSHLPVAESPDMKKE QDPPAKCHTK KHNPRGTHLWEIFIRDILLNPDKNPGLIKWEDRSEGVFRFL KSEAVAQLWG KKKNNSSMTYEKLSRAMRYYYKREILERVDGRRLVYKFGK NARGWRENEN </pre>
<b>Amino acids</b>	1 to 300
<b>Tags</b>	GST tag N-Terminus

Specifications

Our [Abpromise guarantee](#) covers the use of **ab161968** in the following tested applications. The application notes include recommended starting dilutions; optimal dilutions/concentrations should be determined by the end user.

<b>Applications</b>	ELISA Western blot
<b>Form</b>	Liquid
<b>Additional notes</b>	

## Preparation and Storage

---

### Stability and Storage

Shipped on dry ice. Upon delivery aliquot and store at -80°C. Avoid freeze / thaw cycles.

pH: 8.00

Constituents: 0.31% Glutathione, 0.79% Tris HCl

## General Info

---

### Function

Transcriptional activator that may play a role in regulating epithelial cell differentiation and proliferation. May act as a repressor for a specific subset of ETS/AP-1-responsive genes and as a modulator of the nuclear response to mitogen-activated protein kinase signaling cascades. Binds to DNA sequences containing the consensus nucleotide core sequence GGAA. Involved in regulation of TNFRSF10B/DR5 expression through Ets-binding sequences on the TNFRSF10B/DR5 promoter. May contribute to development and carcinogenesis by acting as a tumor suppressor gene or anti-oncogene.

### Tissue specificity

Expressed exclusively in tissues with a high content of epithelial cells. Highly expressed in salivary gland, mammary gland, prostate, and lung. Weakly expressed in kidney and colon. Not detected in heart, brain, placenta, liver, skeletal muscle, spleen, thymus, testis, ovary, small intestine or peripheral blood leukocytes.

### Sequence similarities

Belongs to the ETS family.

Contains 1 ETS DNA-binding domain.

Contains 1 PNT (pointed) domain.

### Domain

The PNT domain acts as a transcriptional activator.

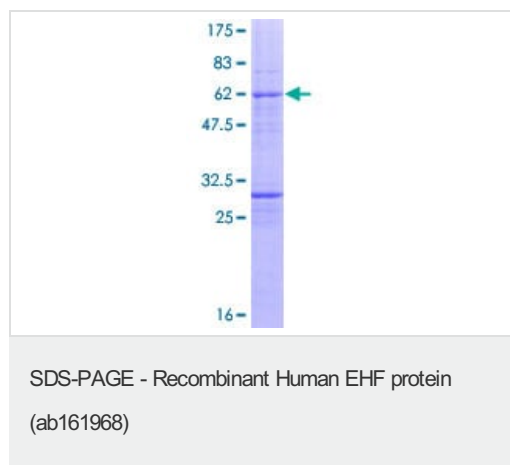
### Cellular localization

Nucleus.

---

## Images

---



ab161968 on a 12.5% SDS-PAGE stained with Coomassie Blue.

**Please note:** All products are "FOR RESEARCH USE ONLY. NOT FOR USE IN DIAGNOSTIC PROCEDURES"

## Our Abpromise to you: Quality guaranteed and expert technical support

---

- Replacement or refund for products not performing as stated on the datasheet

- Valid for 12 months from date of delivery
- Response to your inquiry within 24 hours
  
- We provide support in Chinese, English, French, German, Japanese and Spanish
- Extensive multi-media technical resources to help you
- We investigate all quality concerns to ensure our products perform to the highest standards

If the product does not perform as described on this datasheet, we will offer a refund or replacement. For full details of the Abpromise, please visit <https://www.abcam.com/abpromise> or contact our technical team.

### **Terms and conditions**

---

- Guarantee only valid for products bought direct from Abcam or one of our authorized distributors