

Product datasheet

# Recombinant Human eIF4G1 protein ab158341

1 Image

Overview

<b>Product name</b>	Recombinant Human eIF4G1 protein
<b>Protein length</b>	Full length protein

Description

<b>Nature</b>	Recombinant
<b>Source</b>	Wheat germ
<b>Amino Acid Sequence</b>	
<b>Species</b>	Human

<b>Sequence</b>	<p>MDQYFNQMEKIIKEKKTSSRIRFMLQDVLDLRGSNWVP          RRGDQGPKTIDQ          IHKEAEMEEHREHIKVQQLMAKGSDKRRGGPPGPPIS          RGLPLVDDGGWNT          VPISKGSRPIDTSRLTKITKPGSIDSNNQLFAPGGRLSW          GKGSSTGGSGAK          PSDAASEAARPATSTLNRFSAALQQAQVPTTESTDNRRVV          QRSSLSRERGEKA          GDRGDRLETSERGGDRGDRDRARTPATKRSFSKEV          EERSRERPSQPEGL          RKAASLTEDRDRGRDAVKREAALPPVSPLKAALSEE          ELEKKSKAIIIEYL          HLNDMKEAVQCQELASPSLLFIFVRHGVESTLERSAI          AREHMGQLLHQL          LCAGHLSTAQYYQGLYEILELAEDMEIDIPHVWLYLAEL          VTPILQEGGVP          MGELFREITKPLRPLGKAASLLEILGLLCKSMGPKKV          GTLWREAGLSWK          EFLPEGQDIGAFVAEQKVEYTLGEESEAPGQRALPSE          ELNRQLEKLLKEG          SSNQRVFDWIEANLSEQQVSNLTVRALMTAVCYSIIIF          ETPLRVDVAVL          KARAKLLQKYLCEQKELQALYALQALVVTLEQPPNLL          RMFFDALYDEDV          VKEDAFYSWESSKDPAEQQGKGVALKSVTAFFKWLR          EAEESDHN</p>
-----------------	--

<b>Amino acids</b>	1 to 645
<b>Tags</b>	proprietary tag N-Terminus

## Specifications

---

Our [Abpromise guarantee](#) covers the use of **ab158341** in the following tested applications.

The application notes include recommended starting dilutions; optimal dilutions/concentrations should be determined by the end user.

<b>Applications</b>	Western blot ELISA
<b>Form</b>	Liquid
<b>Additional notes</b>	Protein concentration is above or equal to 0.05 mg/ml.

## Preparation and Storage

---

<b>Stability and Storage</b>	Shipped on dry ice. Upon delivery aliquot and store at -80°C. Avoid freeze / thaw cycles. pH: 8.00 Constituents: 0.31% Glutathione, 0.79% Tris HCl
------------------------------	--

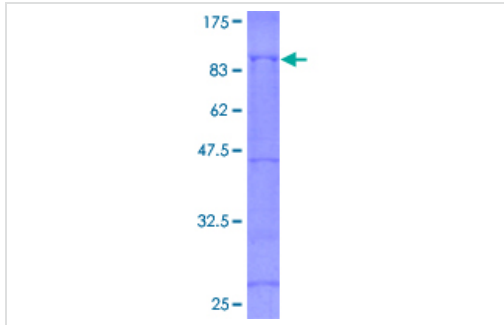
## General Info

---

<b>Function</b>	Component of the protein complex eIF4F, which is involved in the recognition of the mRNA cap, ATP-dependent unwinding of 5'-terminal secondary structure and recruitment of mRNA to the ribosome.
<b>Involvement in disease</b>	Defects in EIF4G1 are the cause of Parkinson disease type 18 (PARK18) [MIM:614251]. An autosomal dominant, late-onset form of Parkinson disease. Parkinson disease is a complex neurodegenerative disorder characterized by bradykinesia, resting tremor, muscular rigidity and postural instability, as well as by a clinically significant response to treatment with levodopa. The pathology involves the loss of dopaminergic neurons in the substantia nigra and the presence of Lewy bodies (intraneuronal accumulations of aggregated proteins), in surviving neurons in various areas of the brain.
<b>Sequence similarities</b>	Belongs to the eIF4G family. Contains 1 MI domain. Contains 1 MIF4G domain. Contains 1 W2 domain.
<b>Post-translational modifications</b>	Phosphorylated at multiple sites in vivo. Phosphorylation at Ser-1185 by PRKCA induces binding to MKNK1. Following infection by certain enteroviruses, rhinoviruses and aphthoviruses, EIF4G1 is cleaved by the viral protease 2A, or the leader protease in the case of aphthoviruses. This shuts down the capped cellular mRNA transcription.

## Images

---



ab158341 on a 12.5% SDS-PAGE stained with Coomassie Blue.

SDS-PAGE - Recombinant Human eIF4G1 protein  
(ab158341)

**Please note:** All products are "FOR RESEARCH USE ONLY AND ARE NOT INTENDED FOR DIAGNOSTIC OR THERAPEUTIC USE"

### Our Abpromise to you: Quality guaranteed and expert technical support

---

- Replacement or refund for products not performing as stated on the datasheet
- Valid for 12 months from date of delivery
- Response to your inquiry within 24 hours
  
- We provide support in Chinese, English, French, German, Japanese and Spanish
- Extensive multi-media technical resources to help you
- We investigate all quality concerns to ensure our products perform to the highest standards

If the product does not perform as described on this datasheet, we will offer a refund or replacement. For full details of the Abpromise, please visit <https://www.abcam.com/abpromise> or contact our technical team.

### Terms and conditions

---

- Guarantee only valid for products bought direct from Abcam or one of our authorized distributors