

Product datasheet

Recombinant Human ELMO1 protein ab131839

1 Image

Description

<b>Product name</b>	Recombinant Human ELMO1 protein
<b>Expression system</b>	Wheat germ
<b>Accession</b>	<a href="#">Q92556</a>
<b>Protein length</b>	Full length protein
<b>Animal free</b>	No
<b>Nature</b>	Recombinant
<b>Species</b>	Human

Sequence

MPPPADMKVAIEWPGAYPKLMEIDQKKPLSAIIEVCDGW  
 SLANHEYFA  
 LQHADSSNFYTEKNRNEIKNGTILRLTTSPAQNAQQLHERI  
 QSSSMDAK  
 LEALKDLASLSRDVTF AQEFINLDGISLLTQMVESGTERYQ  
 KLQKIMKPC  
 FGDMLSFTLTAFVELMDHGMVSWDTFSVAFIKKIASFVNKS  
 AIDISILQR  
 SLAILESMVLNSHDLYQKVAQEITIGQLIPHLQGSDQEIQTYT  
 IAVINAL  
 FLKAPDERRQEMANILAQKQLRSIILTHVIRAQRAINNEMAH  
 QLYVLQVL  
 TFNLLEDRMMTKMDPQDQAQRDIIFELRRIAFDAESEPN  
 SSGSMEKRKS  
 MYTRDYKKLGFINHVNPAMDFTQTPPGMLALDNMLYFAKH  
 HQDAYIRVL  
 ENSSREDKHECPFGRSSIELTKMLCEILKVGELPSETCND  
 FHPMFFTHDR  
 SFEEFFCICIQLLNKTWKEMRATSEDFNKVMQVVKEQVM  
 RALTTKPSSLD  
 QFKSKLQNL SYTEILKIRQSERMNQEDFQSRPILELKEKIQP  
 EILELIQ  
 QRLNRLVEGTCFRKLNARRRQDKFWYCRLSPNHKVLHYG  
 DLEESPQGEVP  
 HDLQDKLPVADIKAVVTGKDCPHMKEKGALKQNKEVLE  
 LAFSILYDSNC  
 QLNFIAPDKHEYCIWTDGLNALLGKDMMSDLTRNDLDTLL  
 SMEIKLRLLD LENIQIPDAPPIPKEPSNYDFVYDCN

<b>Predicted molecular weight</b>	110 kDa including tags
<b>Amino acids</b>	1 to 727

## Specifications

---

Our [Abpromise guarantee](#) covers the use of **ab131839** in the following tested applications.

The application notes include recommended starting dilutions; optimal dilutions/concentrations should be determined by the end user.

<b>Applications</b>	SDS-PAGE ELISA Western blot
<b>Form</b>	Liquid

## Preparation and Storage

---

<b>Stability and Storage</b>	Shipped on dry ice. Upon delivery aliquot and store at -80°C. Avoid freeze / thaw cycles. pH: 8.00 Constituents: 0.31% Glutathione, 0.79% Tris HCl
------------------------------	--

## General Info

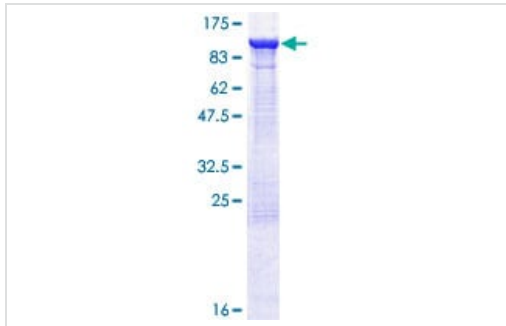
---

<b>Function</b>	Involved in cytoskeletal rearrangements required for phagocytosis of apoptotic cells and cell motility. Acts in association with DOCK1 and CRK. Was initially proposed to be required in complex with DOCK1 to activate Rac Rho small GTPases. May enhance the guanine nucleotide exchange factor (GEF) activity of DOCK1.
<b>Tissue specificity</b>	Widely expressed, with a higher expression in the spleen and placenta.
<b>Sequence similarities</b>	Contains 1 ELMO domain. Contains 1 PH domain.
<b>Post-translational modifications</b>	Phosphorylated by HCK.
<b>Cellular localization</b>	Cytoplasm. Cell membrane. Translocation to plasma membrane seems to be mediated by DOCK1 and CRK.

---

## Images

---



12.5% SDS-PAGE analysis of ab131839 stained with Coomassie Blue.

SDS-PAGE - Recombinant Human ELMO1 protein (ab131839)

**Please note:** All products are "FOR RESEARCH USE ONLY. NOT FOR USE IN DIAGNOSTIC PROCEDURES"

### Our Abpromise to you: Quality guaranteed and expert technical support

---

- Replacement or refund for products not performing as stated on the datasheet
- Valid for 12 months from date of delivery
- Response to your inquiry within 24 hours
  
- We provide support in Chinese, English, French, German, Japanese and Spanish
- Extensive multi-media technical resources to help you
- We investigate all quality concerns to ensure our products perform to the highest standards

If the product does not perform as described on this datasheet, we will offer a refund or replacement. For full details of the Abpromise, please visit <https://www.abcam.com/abpromise> or contact our technical team.

### Terms and conditions

---

- Guarantee only valid for products bought direct from Abcam or one of our authorized distributors