

Product datasheet

Recombinant Human EME1 protein ab165544

1 Image

Description

Product name	Recombinant Human EME1 protein
Expression system	Wheat germ
Protein length	Full length protein
Animal free	No
Nature	Recombinant
Species	Human

Sequence	<p>MALKKSSPSLDSGSDSEELPTFAFLKKEPSSTKRRQ PEREEKMVVDIS DCEASCPPELFSPPVPDIAETVTQTQPVRLLSSES EDEEEFIPLAQR TCKFLTHKQLSPEDSSSPVKSVLDPHQNNEGASCDWK KPFPKIPEVPLHDT PERSAADNKDLIDPCCQLPAYLSTCPGQSSSLAVTK TNSDILPPQKTK PSQKVQGRGSHGCRQQRQARQKESTLRRQERKNAA LVTRMKAQRPEECLK HIIVLDPVLLQMEGGGQLLQALQTMECRCVIEAQAVP CSVTWRRRAGPS EDREDWVEEPTVLVLLRAEAFVSMIDNGKQGS LDST MKGKETLQGFVTDI TAKTAGKALSLVVDQEKCFSELELLFFDFLPCTSAQNP PRRGKQGANKQT KKQQQRQPEASIGSMVSRVDAEEALVDLQLHTEAQA QVQSWKELADFTC AFTKAVAEAPFKKLRDETTFSFCLESDWAGGVKVDL AGRGLALVWRRQIQ QLN RVSLMASAVVNAYPSPQLLVQAYQQCFSDKER QNLLADIQVRRGEG VTSTSRRIPELSRRMLQMTTLQPHLSLDSAD</p>
-----------------	---

Amino acids	1 to 583
Tags	GST tag N-Terminus

Specifications

Our [Abpromise guarantee](#) covers the use of **ab165544** in the following tested applications.

The application notes include recommended starting dilutions; optimal dilutions/concentrations should be determined by the end user.

Applications	ELISA Western blot
Form	Liquid
Additional notes	Protein concentration is above or equal to 0.05 mg/ml.

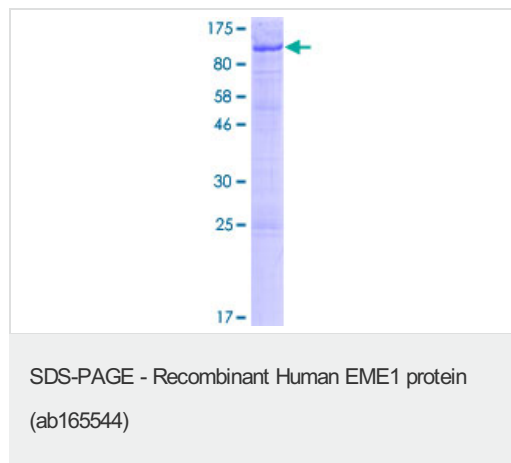
Preparation and Storage

Stability and Storage	Shipped on dry ice. Upon delivery aliquot and store at -80°C. Avoid freeze / thaw cycles. pH: 8.00 Constituents: 0.31% Glutathione, 0.79% Tris HCl
------------------------------	--

General Info

Function	Interacts with MUS81 to form a DNA structure-specific endonuclease with substrate preference for branched DNA structures with a 5'-end at the branch nick. Typical substrates include 3'-flap structures, replication forks and nicked Holliday junctions. May be required in mitosis for the processing of stalled or collapsed replication forks.
Sequence similarities	Belongs to the EME1/MMS4 family.
Cellular localization	Nucleus > nucleolus. Recruited to regions of DNA damage in S-phase cells.

Images



ab165544 on a 12.5% SDS-PAGE stained with Coomassie Blue.

Please note: All products are "FOR RESEARCH USE ONLY. NOT FOR USE IN DIAGNOSTIC PROCEDURES"

Our Abpromise to you: Quality guaranteed and expert technical support

- Replacement or refund for products not performing as stated on the datasheet
- Valid for 12 months from date of delivery
- Response to your inquiry within 24 hours

- We provide support in Chinese, English, French, German, Japanese and Spanish
- Extensive multi-media technical resources to help you
- We investigate all quality concerns to ensure our products perform to the highest standards

If the product does not perform as described on this datasheet, we will offer a refund or replacement. For full details of the Abpromise, please visit <https://www.abcam.com/abpromise> or contact our technical team.

Terms and conditions

- Guarantee only valid for products bought direct from Abcam or one of our authorized distributors