

Product datasheet

Recombinant Human EMILIN2 protein ab164482

1 Image

Overview

Product name	Recombinant Human EMILIN2 protein
Protein length	Protein fragment

Description

Nature	Recombinant
Source	Wheat germ
Amino Acid Sequence	
Species	Human
Sequence	GPKDPVKTLRPTPARPRNSLKKATDNEPSQFSEPRKT LSPTGTAQPSWGV DPKEGPQELQEKKIQVLEEKVLRRLTRTVLDLQSSLAGV SENLKHATQDDA SRTRAPGLSS
Amino acids	121 to 230
Tags	GST tag N-Terminus

Specifications

Our [Abpromise guarantee](#) covers the use of **ab164482** in the following tested applications.

The application notes include recommended starting dilutions; optimal dilutions/concentrations should be determined by the end user.

Applications	Western blot ELISA
Form	Liquid
Additional notes	Protein concentration is above or equal to 0.05 mg/ml.

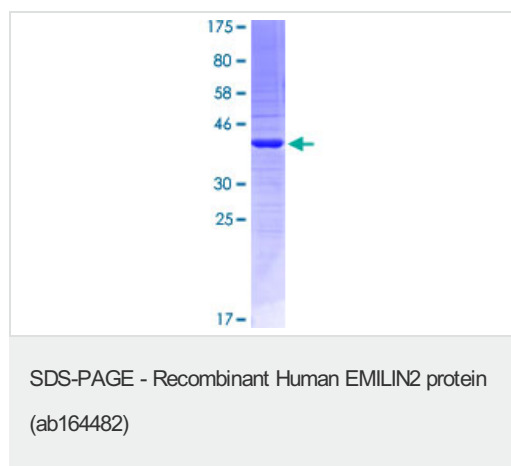
Preparation and Storage

Stability and Storage	Shipped on dry ice. Upon delivery aliquot and store at -80°C. Avoid freeze / thaw cycles. pH: 8.00 Constituents: 0.31% Glutathione, 0.79% Tris HCl
------------------------------	--

General Info

Function	May be responsible for anchoring smooth muscle cells to elastic fibers, and may be involved not only in the formation of the elastic fiber, but also in the processes that regulate vessel assembly. Has cell adhesive capacity.
Tissue specificity	Highest levels are present in fetal heart and adult lung. Intermediate levels in peripheral leukocytes, placenta, and spinal cord and low expression in fetal brain, spleen, thymus, and lung and in adult heart, aorta, testis, bone marrow, small intestine, thymus, lymph node, and appendix.
Sequence similarities	Contains 1 C1q domain. Contains 1 collagen-like domain. Contains 1 EMI domain.
Cellular localization	Secreted > extracellular space > extracellular matrix. Found mainly at the interface between amorphous elastin and microfibrils.

Images



ab164482 on a 12.5% SDS-PAGE stained with Coomassie Blue.

Please note: All products are "FOR RESEARCH USE ONLY. NOT FOR USE IN DIAGNOSTIC PROCEDURES"

Our Abpromise to you: Quality guaranteed and expert technical support

- Replacement or refund for products not performing as stated on the datasheet
- Valid for 12 months from date of delivery
- Response to your inquiry within 24 hours
- We provide support in Chinese, English, French, German, Japanese and Spanish
- Extensive multi-media technical resources to help you
- We investigate all quality concerns to ensure our products perform to the highest standards

If the product does not perform as described on this datasheet, we will offer a refund or replacement. For full details of the Abpromise, please visit <https://www.abcam.com/abpromise> or contact our technical team.

Terms and conditions

- Guarantee only valid for products bought direct from Abcam or one of our authorized distributors