

Product datasheet

Recombinant Human ENSA protein (His tag) ab219690

1 Image

Description

Product name	Recombinant Human ENSA protein (His tag)	
Purity	> 90 % SDS-PAGE.	
Endotoxin level	< 1.000 Eu/μg	
Expression system	Escherichia coli	
Accession	O43768	
Protein length	Full length protein	
Animal free	No	
Nature	Recombinant	
Species	Human	
Sequence	SQKQEEENPAEETGEEKQDTQEKEGILPERAEEAKLK AKYPSLGQKPGGS DFLMKRLQKGQKYFDSGDYNMAKAKMKNKQLPSAGP DKNLVTGDHIPTPD LPQRKSSLVTSKLAGGQVE	
Predicted molecular weight	14 kDa including tags	
Amino acids	2 to 121	
Tags	His tag N-Terminus	
Additional sequence information	(AAH00436).	

Specifications

Our [Abpromise guarantee](#) covers the use of **ab219690** in the following tested applications.

The application notes include recommended starting dilutions; optimal dilutions/concentrations should be determined by the end user.

Applications	SDS-PAGE
Form	Lyophilised

Preparation and Storage

Stability and Storage	Shipped at 4°C. Store at 4°C (stable for up to 12 months). Store at -20°C or -80°C. Avoid freeze / thaw cycle. pH: 7.40
------------------------------	--

Constituent: 95% PBS

Note: 5-10% trehalose is commonly used for freeze drying, and after reconstitution, the trehalose is mostly about 3-5%.

Reconstitution

It is recommended to reconstitute the lyophilized product in sterile deionized water to a final concentration of 1 mg/ml. Solubilize for 30 to 60 minutes at room temperature with occasional gentle mixing. Carrier protein (0.1% HSA or BSA) is strongly recommended for further dilution and long term storage.

General Info

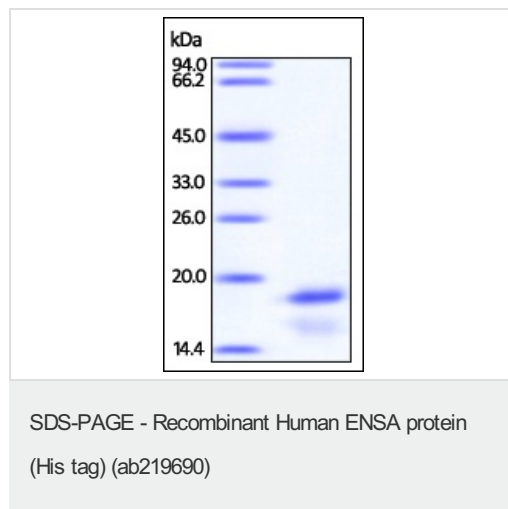
Relevance

ENSA (Alpha endosulfine) is expressed in a wide range of tissues including muscle, brain, and endocrine tissues. The recombinant protein inhibits binding of labeled glibenclamide to beta cell membranes. It also inhibits cloned K(ATP) channel currents and thereby stimulates insulin secretion. It was proposed that endosulfine is an endogenous regulator of the K(ATP) channel, which has a key role in the control of insulin release and, more generally, couples cell metabolism to electrical activity.

Cellular localization

Cytoplasmic

Images



SDS-PAGE analysis of DTT-reduced ab219690 stained overnight with Coomassie Blue. DTT-reduced protein migrates as 18 kDa.

Please note: All products are "FOR RESEARCH USE ONLY. NOT FOR USE IN DIAGNOSTIC PROCEDURES"

Our Abpromise to you: Quality guaranteed and expert technical support

- Replacement or refund for products not performing as stated on the datasheet
- Valid for 12 months from date of delivery
- Response to your inquiry within 24 hours
- We provide support in Chinese, English, French, German, Japanese and Spanish
- Extensive multi-media technical resources to help you
- We investigate all quality concerns to ensure our products perform to the highest standards

If the product does not perform as described on this datasheet, we will offer a refund or replacement. For full details of the Abpromise, please visit <https://www.abcam.com/abpromise> or contact our technical team.

Terms and conditions

- Guarantee only valid for products bought direct from Abcam or one of our authorized distributors