

Product datasheet

Recombinant Human ENTPD3 protein (His tag) (denatured) ab202215

1 Image

Description

<b>Product name</b>	Recombinant Human ENTPD3 protein (His tag) (denatured)
<b>Purity</b>	> 85 % SDS-PAGE. ab202215 was purified using conventional chromatography.
<b>Expression system</b>	Escherichia coli
<b>Accession</b>	<a href="#">O75355</a>
<b>Protein length</b>	Protein fragment
<b>Animal free</b>	No
<b>Nature</b>	Recombinant
<b>Species</b>	Human
<b>Sequence</b>	<p>MGSSHHHHHH SSGLVPRGSH MGSQIHKQEV  LPPGLKYGIV LDAGSSRTTV VYQWPAEKE  NNTGVVSQTF KCSVKGSGIS SYGNNPQDVP  RAFEECMQKV KGQVPSHLHG STPIHLGATA  GMRLRLQNE TAANEVLESI QSYFKSQPFD  FRGAQIISGQ EEGVYGWITA NYLMGNFLEK  NLWHMWVHPH GVETTGALDL GGASTQISFV  AGEKMDLNTS DIMQVSLYGY VYTYLTHSFQ  CYGRNEAEKK FLAMLLQNSP TKNHLTNPCY  PRDYSISFTM GHVFDLCTV DQRPEYNPN  DVITFEGTGD PSLCKEKVAS IFDFKACHDQ  ETCSFDGVYQ PKIKGPFVAF AGFYTASAL  NLSGSFSLDT FNSSTWNFCS QNWSQLPLLL  PKFDEVYARS YCFSANYYH LFNNGYKFTE  ETWPQIHFEK EVGNSSIAWS LGYMLSLTNQ  IPAESPLIRL PIEPP</p>
<b>Predicted molecular weight</b>	52 kDa including tags
<b>Amino acids</b>	44 to 485
<b>Tags</b>	His tag N-Terminus
<b>Description</b>	Recombinant Human ENTPD3 protein (His tag)

Specifications

Our [Abpromise guarantee](#) covers the use of **ab202215** in the following tested applications.

The application notes include recommended starting dilutions; optimal dilutions/concentrations should be determined by the end user.

**Applications** SDS-PAGE

## Preparation and Storage

**Stability and Storage** Shipped at 4°C. Store at +4°C short term (1-2 weeks). Upon delivery aliquot. Store at -20°C or -80°C. Avoid freeze / thaw cycle.

pH: 8.0  
Constituents: 99% Tris HCl, 10% Glycerol

## General Info

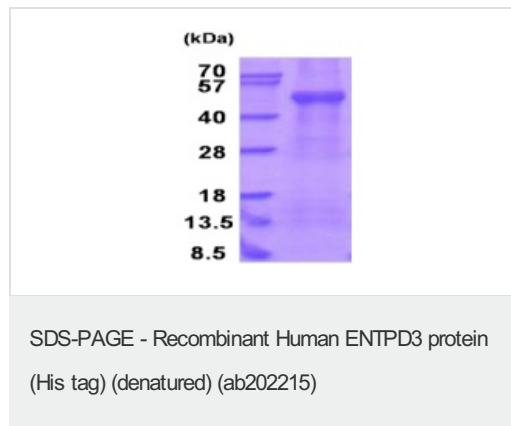
**Function** Has a threefold preference for the hydrolysis of ATP over ADP.

**Tissue specificity** Expressed in adult brain, pancreas, spleen and prostate. Moderate or low expression is seen in most tissues. Not expressed in liver and peripheral blood leukocytes.

**Sequence similarities** Belongs to the GDA1/CD39 NTPase family.

**Cellular localization** Membrane.

## Images



15% SDS PAGE analysis of 3 µg ab202215

**Please note:** All products are "FOR RESEARCH USE ONLY. NOT FOR USE IN DIAGNOSTIC PROCEDURES"

## Our Abpromise to you: Quality guaranteed and expert technical support

- Replacement or refund for products not performing as stated on the datasheet
- Valid for 12 months from date of delivery
- Response to your inquiry within 24 hours
- We provide support in Chinese, English, French, German, Japanese and Spanish
- Extensive multi-media technical resources to help you

- We investigate all quality concerns to ensure our products perform to the highest standards

If the product does not perform as described on this datasheet, we will offer a refund or replacement. For full details of the Abpromise, please visit <https://www.abcam.com/abpromise> or contact our technical team.

### **Terms and conditions**

---

- Guarantee only valid for products bought direct from Abcam or one of our authorized distributors