

Product datasheet

Recombinant Human EPS8L1 protein ab162865

1 Image

Description

<b>Product name</b>	Recombinant Human EPS8L1 protein
<b>Expression system</b>	Wheat germ
<b>Protein length</b>	Full length protein
<b>Animal free</b>	No
<b>Nature</b>	Recombinant
<b>Species</b>	Human
<b>Sequence</b>	<p>MGRKAVLAIANTSLAFPLCQHLLVTFCLGEDDGVHTVEDA  SRKLAVMDSQ  GRVWAQEMLLRVSPDHVTLDPASKEELESYPLGAMRC  DAVMPPGRSRS  LLLLVCQEPERAQPDVHFFQGLRLGAELIREDIQGALHNYR  SGRGERRAA  ALRATQEELQRDRSPAETPPLQRRPSVRAVISTVERGA  GRGRPQAKPIP  EAEEAQRPEPVGTSSNADSASPDLGPRGPD LAVLQAER  EVDILNHVFDDV  ESFVSRLQKSAEAARVLEHRERGRRRSRRRAAGEGLLTLR  AKPPSEAEYTD  VLQKIKYAFSLLARLRGNIADPSSPELLHFLFGPLQMIVNTS  GGPEFASS  VRRPHLTSDAVALLRDNVTPRENELWTS LGDSWTRPGL  LSPEEGPPYRP  EFFSGWEPPVTD PQSRAWEDPVEKQLQHERRRRQVTQ  ATQQGRGWEVRGR  GRSAWPRLTRLSYFLQQSAPQVAVNGHRDLEPESEPQLE  SETAGKWWLCN  YDFQARNSSSELSVKQRDVLEVLEDKEKVSELEAVMEKQ  KKKVEGEVEMEV I</p>
<b>Amino acids</b>	1 to 551
<b>Tags</b>	GST tag N-Terminus

Specifications

Our [Abpromise guarantee](#) covers the use of **ab162865** in the following tested applications.

The application notes include recommended starting dilutions; optimal dilutions/concentrations should be determined by the end user.

<b>Applications</b>	ELISA Western blot
<b>Form</b>	Liquid
<b>Additional notes</b>	

---

### Preparation and Storage

<b>Stability and Storage</b>	Shipped on dry ice. Upon delivery aliquot and store at -80°C. Avoid freeze / thaw cycles. pH: 8.00 Constituents: 0.31% Glutathione, 0.79% Tris HCl
------------------------------	--

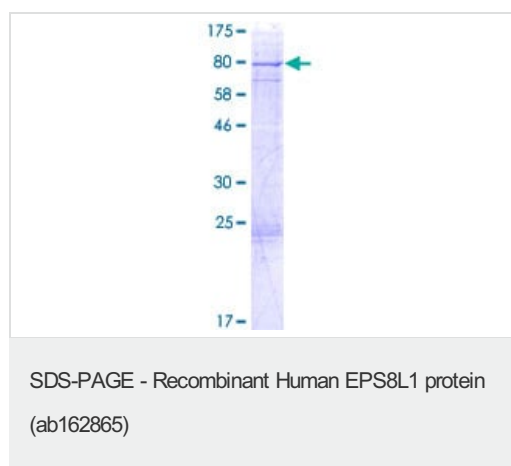
---

### General Info

<b>Function</b>	Stimulates guanine exchange activity of SOS1. May play a role in membrane ruffling and remodeling of the actin cytoskeleton.
<b>Tissue specificity</b>	Detected in placenta.
<b>Sequence similarities</b>	Belongs to the EPS8 family. Contains 1 SH3 domain.
<b>Cellular localization</b>	Cytoplasm.

---

### Images



ab162865 on a 12.5% SDS-PAGE stained with Coomassie Blue.

**Please note:** All products are "FOR RESEARCH USE ONLY. NOT FOR USE IN DIAGNOSTIC PROCEDURES"

---

### Our Abpromise to you: Quality guaranteed and expert technical support

- Replacement or refund for products not performing as stated on the datasheet
- Valid for 12 months from date of delivery

- Response to your inquiry within 24 hours
- We provide support in Chinese, English, French, German, Japanese and Spanish
- Extensive multi-media technical resources to help you
- We investigate all quality concerns to ensure our products perform to the highest standards

If the product does not perform as described on this datasheet, we will offer a refund or replacement. For full details of the Abpromise, please visit <https://www.abcam.com/abpromise> or contact our technical team.

### **Terms and conditions**

---

- Guarantee only valid for products bought direct from Abcam or one of our authorized distributors