

Product datasheet

Recombinant Human Epsin 1 protein ab162265

1 Image

Description

Product name	Recombinant Human Epsin 1 protein
Expression system	Wheat germ
Protein length	Full length protein
Animal free	No
Nature	Recombinant
Species	Human
Sequence	<p>MSTSSLRRQMKNVHNYSEAEIKVREATSNDPWGPSSSL MSEIADLTYNV VAFSEIMSMWKRLNDHGKNWRHVYKAMTLMEYLIKTGSE RVSQQCKENM YAVQTLKDFQYVDRDGKDQGVNVREKAKQLVALLRDED RLREERAHALKT KEKLAQTATASSAAVGSPPPEAEQAWPQSSGEEELQL QLALAMSKEEAD QEERIRRGDDLRLQMAIEESKRETGGKEESSLMDLADVFT APAPAPTTDP WGGPAPMAAAVPTAAPTSDPWGGPPVPPAADPWGGPA PTPASGDPWRPAA PAGPSVDPWGGTPAPAAGEGPTDPWGSSDGGVPVSG PSASDPWTPAPAF SDPWGGSPAKPSTNGTTAGGFDTEPDEFSDFDRLRTAL PTSGSSAGELEL LAGEVPARSPGAFDMSGVRGSLAEAVGSPPPAATPTPT PPTRKTPESFLG PNAALVDLDSLVSRLGPTPPGAKASNPFLPGGGPATGPS VTNPFQPAPPA TLTLNQLRLSPVPPVPGAPPTYISPLGGGPGPLPPMMPPGP PAPNTNPFL</p>
Amino acids	1 to 550
Tags	GST tag N-Terminus

Specifications

Our [Abpromise guarantee](#) covers the use of **ab162265** in the following tested applications.

The application notes include recommended starting dilutions; optimal dilutions/concentrations should be determined by the end user.

Applications	Western blot ELISA
Form	Liquid
Additional notes	

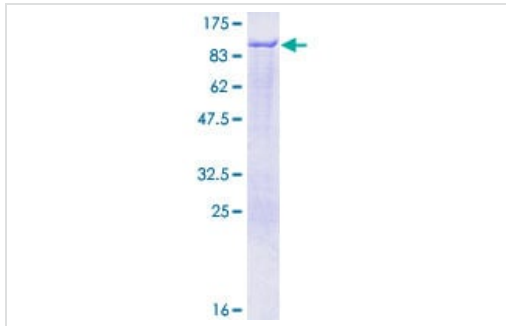
Preparation and Storage

Stability and Storage	Shipped on dry ice. Upon delivery aliquot and store at -80°C. Avoid freeze / thaw cycles. pH: 8.00 Constituents: 0.31% Glutathione, 0.79% Tris HCl
------------------------------	----------------------------------------------------------------------------------------------------------------------------------------------------------

General Info

Function	Binds to membranes enriched in phosphatidylinositol 4,5-bisphosphate (PtdIns(4,5)P ₂). Modifies membrane curvature and facilitates the formation of clathrin-coated invaginations (By similarity). Regulates receptor-mediated endocytosis.
Sequence similarities	Belongs to the epsin family. Contains 1 ENTH (epsin N-terminal homology) domain. Contains 3 UIM (ubiquitin-interacting motif) repeats.
Domain	The NPF repeat domain is involved in EPS15 binding. The DPW repeat domain is involved in AP2A2 and clathrin binding. The [DE]-X(1,2)-F-X-X-[FL]-X-X-X-R motif mediates interaction with the AP-2 complex subunit AP2B1.
Post-translational modifications	Phosphorylated on serine and/or threonine residues in mitotic cells. Phosphorylation reduces interaction with REPS2, AP-2 and the membrane fraction. Depolarization of synaptosomes results in dephosphorylation. Ubiquitinated.
Cellular localization	Cytoplasm. Cell membrane. Nucleus. Membrane > clathrin-coated pit. Associated with the cytoplasmic membrane at sites where clathrin-coated pits are forming. Colocalizes with clathrin and AP-2 in a punctate pattern on the plasma membrane. Detected in presynaptic nerve terminals and in Golgi stacks. May shuttle to the nucleus when associated with ZBTB16/ZNF145.

Images



ab162265 on a 12.5% SDS-PAGE stained with Coomassie Blue.

SDS-PAGE - Recombinant Human Epsin 1 protein
(ab162265)

Please note: All products are "FOR RESEARCH USE ONLY. NOT FOR USE IN DIAGNOSTIC PROCEDURES"

Our Abpromise to you: Quality guaranteed and expert technical support

- Replacement or refund for products not performing as stated on the datasheet
- Valid for 12 months from date of delivery
- Response to your inquiry within 24 hours
- We provide support in Chinese, English, French, German, Japanese and Spanish
- Extensive multi-media technical resources to help you
- We investigate all quality concerns to ensure our products perform to the highest standards

If the product does not perform as described on this datasheet, we will offer a refund or replacement. For full details of the Abpromise, please visit <https://www.abcam.com/abpromise> or contact our technical team.

Terms and conditions

- Guarantee only valid for products bought direct from Abcam or one of our authorized distributors