

Product datasheet

Recombinant Human eRF3/GSPT1 protein ab132287

1 Image

Description

Product name	Recombinant Human eRF3/GSPT1 protein
Expression system	Wheat germ
Protein length	Full length protein
Animal free	No
Nature	Recombinant
Species	Human
Sequence	<p>MDPGSGGGGGGGSSSSGSSSSDSAPDCWDQADMEAP GPGPCGGGGSLAAA AEAQRENLSAAF SRQLNVNAKPFV PNVHAAEFVPSFLRC PAAPPPAGGA ANNHGAGSGAGGRAAPVESSQEEQSLCEGSNSAVSMEL SEPIENGETEMS PEESWEHKEEISEAEPGGGSLGDGRPPEESAHEMMEEE EEIPKPKSVVAP PGAPKKEHVNVFIGHV DAGKSTIGGQIMYLTGMVDKRTL EKYEREAKEK NRETWYLSWALDTNQEERDKGKTVEVGRAYFETEKKHFTI LDAPGHKSFV PNMIGGASQADLAVLVISARKGEFETGFEEKGGQTRHAML AKTAGVKHLI VLINKMDDPTVNWSNEREYEECKEKLVPFLKKVGFNPKKDI HFMPCSGLTG ANLKEQSDFCPWYIGLPFIPYLDNLPNFNRSVDGP IRLPVD KYKDMGTV VLGKLESGSICKGQQLVMMPNKHNVEVLGILSDDVETDTV APGENLKIRL KGIEEEEILPGFILCDPNNLCHSGRTFDAQMIIEHKSICPGY NAVLHI HTCIEEVEITALICLVDKKSGEKS KTRPRFVKQDQVC IARLR TAGTICLE TFKDFPQMGRFTLRDEGK TIAIGKVLKLVPEKD</p>
Predicted molecular weight	95 kDa including tags
Amino acids	1 to 633

Specifications

Specifications

Our [Abpromise guarantee](#) covers the use of **ab132287** in the following tested applications.

The application notes include recommended starting dilutions; optimal dilutions/concentrations should be determined by the end user.

Applications	ELISA SDS-PAGE Western blot
Form	Liquid

Preparation and Storage

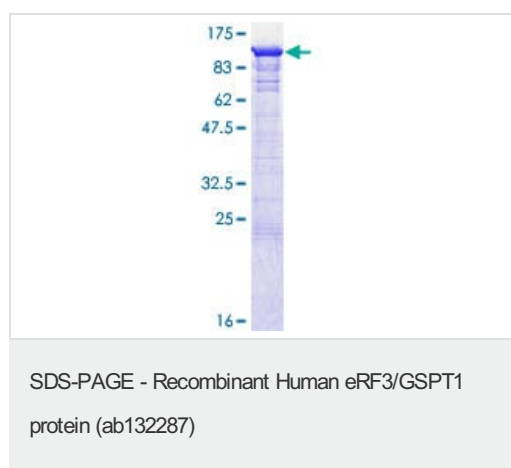
Stability and Storage	Shipped on dry ice. Upon delivery aliquot and store at -80°C. Avoid freeze / thaw cycles. pH: 8.00 Constituents: 0.31% Glutathione, 0.79% Tris HCl
------------------------------	--

General Info

Relevance	Translation termination in eukaryotes is governed by two proteins, belonging to the class-1 (eRF1) and class-2 (eRF3) polypeptide release factors. eRF3/GSPT1 is involved in regulation of mammalian cell growth and belongs to the GTP-binding elongation factor family (ERF3 subfamily). eRF3 catalyzes hydrolysis of GTP to GDP and inorganic phosphate in the ribosome in the absence of mRNA, tRNA, aminoacyl-tRNA and peptidyl-tRNA.
------------------	--

Cellular localization	Cytoplasmic
------------------------------	-------------

Images



12.5% SDS-PAGE stained with Coomassie Blue showing ab132287.

Please note: All products are "FOR RESEARCH USE ONLY. NOT FOR USE IN DIAGNOSTIC PROCEDURES"

Our Abpromise to you: Quality guaranteed and expert technical support

- Replacement or refund for products not performing as stated on the datasheet
- Valid for 12 months from date of delivery

- Response to your inquiry within 24 hours
- We provide support in Chinese, English, French, German, Japanese and Spanish
- Extensive multi-media technical resources to help you
- We investigate all quality concerns to ensure our products perform to the highest standards

If the product does not perform as described on this datasheet, we will offer a refund or replacement. For full details of the Abpromise, please visit <https://www.abcam.com/abpromise> or contact our technical team.

Terms and conditions

- Guarantee only valid for products bought direct from Abcam or one of our authorized distributors