

Product datasheet

Recombinant Human ERGIC1 protein ab163530

1 Image

Overview

| | |
|-----------------------|----------------------------------|
| Product name | Recombinant Human ERGIC1 protein |
| Protein length | Full length protein |

Description

| | |
|----------------------------|---|
| Nature | Recombinant |
| Source | Wheat germ |
| Amino Acid Sequence | |
| Species | Human |
| Sequence | <p>MPPDFRRFDYRKVPKDLTQPTYTGAIISICCLFILFLFL SELTGFITT EVVNELYDDDPDKDSGGKIDVSLNISLPNLHCELVGLD IQDEMGRHEVGH IDNSMKIPLNNGAGCRFEGQFSINKVPGNFHVSTHSAT AQPQNPDMTHVI HKLSFGDTLQVQNIHGAFNALGGADRLTSNPLASHDYI LKIVPTVYEDKS GKQRYSYQYTVANKEYVAYSHTGRIIPAWFRYDLSPITV KYTERRQPLY RFITTCIAIGGTFTVAGILDSCIFTASEAWKKIQLGKMH</p> |
| Amino acids | 1 to 290 |
| Tags | proprietary tag N-Terminus |

Specifications

Our [Abpromise guarantee](#) covers the use of **ab163530** in the following tested applications. The application notes include recommended starting dilutions; optimal dilutions/concentrations should be determined by the end user.

| | |
|-------------------------|--|
| Applications | Western blot ELISA |
| Form | Liquid |
| Additional notes | Protein concentration is above or equal to 0.05 mg/ml. |

Preparation and Storage

Stability and Storage

Shipped on dry ice. Upon delivery aliquot and store at -80°C. Avoid freeze / thaw cycles.

pH: 8.00

Constituents: 0.31% Glutathione, 0.79% Tris HCl

General Info

Function

Possible role in transport between endoplasmic reticulum and Golgi.

Sequence similarities

Belongs to the ERGIC family.

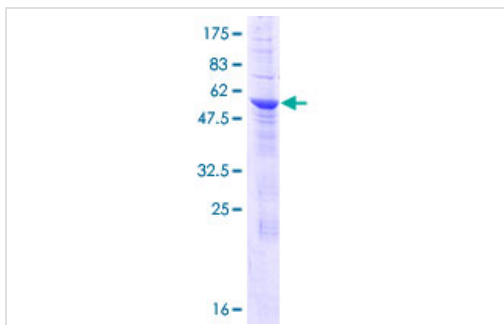
Post-translational modifications

N-glycosylated.

Cellular localization

Endoplasmic reticulum membrane. Endoplasmic reticulum-Golgi intermediate compartment membrane. Golgi apparatus membrane. Cycles between the endoplasmic reticulum and the Golgi.

Images



ab163530 on a 12.5% SDS-PAGE stained with Coomassie Blue.

SDS-PAGE - Recombinant Human ERGIC1 protein
(ab163530)

Please note: All products are "FOR RESEARCH USE ONLY AND ARE NOT INTENDED FOR DIAGNOSTIC OR THERAPEUTIC USE"

Our Abpromise to you: Quality guaranteed and expert technical support

- Replacement or refund for products not performing as stated on the datasheet
- Valid for 12 months from date of delivery
- Response to your inquiry within 24 hours
- We provide support in Chinese, English, French, German, Japanese and Spanish
- Extensive multi-media technical resources to help you
- We investigate all quality concerns to ensure our products perform to the highest standards

If the product does not perform as described on this datasheet, we will offer a refund or replacement. For full details of the Abpromise, please visit <https://www.abcam.com/abpromise> or contact our technical team.

Terms and conditions

- Guarantee only valid for products bought direct from Abcam or one of our authorized distributors