

Product datasheet

Recombinant Human F2RL3 protein ab160289

1 Image

Description

<b>Product name</b>	Recombinant Human F2RL3 protein	
<b>Expression system</b>	Wheat germ	
<b>Protein length</b>	Protein fragment	
<b>Animal free</b>	No	
<b>Nature</b>	Recombinant	
<b>Species</b>	Human	
<b>Sequence</b>	GGTQTPSVYDESGSTGGGDDSTPSILPAPRGYPGQVC ANDSDTLELPDSS RALLLGWVPTLVPA	
<b>Amino acids</b>	18 to 82	
<b>Tags</b>	GST tag N-Terminus	

Specifications

Our [Abpromise guarantee](#) covers the use of **ab160289** in the following tested applications.

The application notes include recommended starting dilutions; optimal dilutions/concentrations should be determined by the end user.

<b>Applications</b>	ELISA Western blot
<b>Form</b>	Liquid
<b>Additional notes</b>	Protein concentration is above or equal to 0.05 mg/ml. Previously labelled as Proteinase Activated Receptor 4.

Preparation and Storage

<b>Stability and Storage</b>	Shipped on dry ice. Upon delivery aliquot and store at -80°C. Avoid freeze / thaw cycles. pH: 8.00 Constituents: 0.31% Glutathione, 0.79% Tris HCl
------------------------------	--

General Info

<b>Function</b>	Receptor for activated thrombin or trypsin coupled to G proteins that stimulate phosphoinositide
-----------------	--

hydrolysis. May play a role in platelets activation.

#### Tissue specificity

Widely expressed, with highest levels in lung, pancreas, thyroid, testis and small intestine. Not expressed in brain, kidney, spinal cord and peripheral blood leukocytes. Also detected in platelets.

#### Sequence similarities

Belongs to the G-protein coupled receptor 1 family.

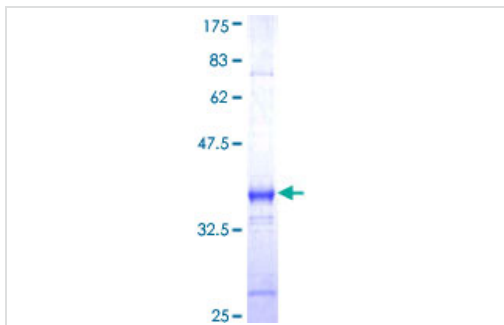
#### Post-translational modifications

A proteolytic cleavage generates a new N-terminus that functions as a tethered ligand.

#### Cellular localization

Cell membrane.

## Images



ab160289 on a 12.5% SDS-PAGE stained with Coomassie Blue.

SDS-PAGE - Recombinant Human F2RL3 protein  
(ab160289)

**Please note:** All products are "FOR RESEARCH USE ONLY. NOT FOR USE IN DIAGNOSTIC PROCEDURES"

## Our Abpromise to you: Quality guaranteed and expert technical support

- Replacement or refund for products not performing as stated on the datasheet
- Valid for 12 months from date of delivery
- Response to your inquiry within 24 hours
- We provide support in Chinese, English, French, German, Japanese and Spanish
- Extensive multi-media technical resources to help you
- We investigate all quality concerns to ensure our products perform to the highest standards

If the product does not perform as described on this datasheet, we will offer a refund or replacement. For full details of the Abpromise, please visit <https://www.abcam.com/abpromise> or contact our technical team.

## Terms and conditions

- Guarantee only valid for products bought direct from Abcam or one of our authorized distributors