

Product datasheet

Recombinant Human FAM13B1 protein ab162502

1 Image

Overview

<b>Product name</b>	Recombinant Human FAM13B1 protein
<b>Protein length</b>	Full length protein

Description

<b>Nature</b>	Recombinant
<b>Source</b>	Wheat germ
<b>Amino Acid Sequence</b>	
<b>Species</b>	Human
<b>Sequence</b>	<p>MRKSSSPSLSNCSVLANKIFGIPLDELQQGGHPDNE  VPFIVRHVVVDYIE  EHGGLEQQGLFQVNGNAETVEWLRQRYDSGEEVDLV  KEADVPSAISLLRF  FLQELPEPVI PGSLHIHLMQLSQDYNNEDFGRKLRFL  LQQLPPVNYSL  KFLCRFLANVASHHEEWSANSLAAVFGPDVFHIYTDV  EDMKEQEVSRI  MAGLLENYEFFENEEEDFSSNDLSSITEQVNELSEEE  EEDEKLEHIEEL  PEEGA EKSNMPEVVQLRMTENILESNSVTATSTHISPI  SILPASTDILE  RTIRAAVEQH LFDLQSSIDHDLKNLQQQSVVCNNEAES  IHCDGEGSNNQI  DIADDIINASESNRDCSKPVASTNLDNEAMQQDCVFE  NEENTQSVGILLE  PCSDRGDSEDGCLEREEYLLFDSKLSHLILDSSSKIC  DLNANTESEVPG  GQSVGVQGEAACVSIPHLDLKNVSDGDKWEEPPAF  KSWQEDSESGEAQL  SPQAGRMNHHPLEEDCPPVLSHRSLDFGQSQRFLHD  PEKLDSSSKALSFT  RIRRSSFSSKDEKREDRTPYQLVKKLQKKIRQFEEQFE  RERNKPSYS DI  AANPKVLKWMTELTCLRKQIKDAKHKNSDGEFVPQTR  PRSNLTPKSFSS</p>

LDHEDEENEDEPKVIQKEKKPSKEATLELILKRLKEKRI  
ERCLPEDIKKM  
TKDHLVEEKASLQKSLLYESQHGRPVTKEERHIVKPL  
YDRYRLVKQMLT  
RASITPVLGSPSTKRRGQMLQPIIEGETAHFFEEIKEEE  
EDGVNLSSELG  
DMLKTAVQVQSSELENSESDVEENQEKLALDLRLSSS  
RAASMPELLEQLWK  
ARAEKKLRKTLREFEEAFYQQNGRNAQKEDRVPVLE  
EYREYKKIKAKLR LLEVLISKQDSSKSI

**Amino acids** 1 to 915  
**Tags** proprietary tag N-Terminus

## Specifications

---

Our [Abpromise guarantee](#) covers the use of **ab162502** in the following tested applications.

The application notes include recommended starting dilutions; optimal dilutions/concentrations should be determined by the end user.

**Applications** ELISA  
Western blot

**Form** Liquid

**Additional notes** Protein concentration is above or equal to 0.05 mg/ml.

## Preparation and Storage

---

**Stability and Storage** Shipped on dry ice. Upon delivery aliquot and store at -80°C. Avoid freeze / thaw cycles.  
pH: 8.00  
Constituents: 0.31% Glutathione, 0.79% Tris HCl

## General Info

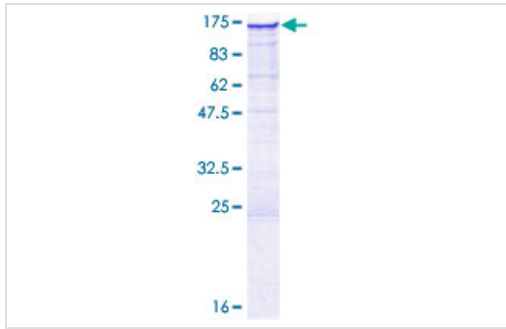
---

**Sequence similarities** Belongs to the FAM13 family.  
Contains 1 Rho-GAP domain.

---

## Images

---



ab162502 on a 12.5% SDS-PAGE stained with Coomassie Blue.

SDS-PAGE - Recombinant Human FAM13B1 protein (ab162502)

**Please note:** All products are "FOR RESEARCH USE ONLY AND ARE NOT INTENDED FOR DIAGNOSTIC OR THERAPEUTIC USE"

### Our Abpromise to you: Quality guaranteed and expert technical support

---

- Replacement or refund for products not performing as stated on the datasheet
- Valid for 12 months from date of delivery
- Response to your inquiry within 24 hours
  
- We provide support in Chinese, English, French, German, Japanese and Spanish
- Extensive multi-media technical resources to help you
- We investigate all quality concerns to ensure our products perform to the highest standards

If the product does not perform as described on this datasheet, we will offer a refund or replacement. For full details of the Abpromise, please visit <https://www.abcam.com/abpromise> or contact our technical team.

### Terms and conditions

---

- Guarantee only valid for products bought direct from Abcam or one of our authorized distributors