

Product datasheet

Recombinant Human FAM35A protein ab162773

1 Image

Overview

<b>Product name</b>	Recombinant Human FAM35A protein
<b>Protein length</b>	Full length protein

Description

<b>Nature</b>	Recombinant
<b>Source</b>	Wheat germ
<b>Amino Acid Sequence</b>	
<b>Species</b>	Human

<b>Sequence</b>	<p>MSGGSQVHIFWGAPIAPLKITVSEDASLMSVADPWK          KIQLLYSQHSLYL          KDEKQHKNLENYKVPESIGSPDLSGHFLANCMNRHVH          VKDDFVRSVSETQ          NIESQKIHSSRLSDITSSNMQICGFKSTVPHFTEEEKYQ          KLLSENKIRDE          QPKHQPDICGNFNTNLFQLGHKCAAVLDLVCSTEKIN          IGPEVVQRECV          TEYHEIQNQCLGLFSSNAVDKSRSEAAVRKVSDLKIST          DTEFLSIITSSQ          VAFLAQKKDKRRSPVKNKGNVNMETEPKASYGEIRIPE          ENSIQLDGFTEAY          ESGQNQAYSLELFSPVCPKTENSRIHNSDKGLEEHTG          SQELFSSSEDELP          PNEIRIELCSSGILCSQLNTFHKSAIKRSCTSEDKVGQS          EALSRLVQVAK          KMKLISNGGDSAVEMDRRNVSEFKSIKKTSLIKNCDSK          SQKYNCLVMVLS          PCHVKEINIKFGPNSGSKVPLATVTVIDQSETKKKVFL          WRTAAFWAFTVF          LGDIILLTDVVIHEDQWIGETVLQSTFSSQLLNLSYSSI          QPEEYSSVVS          EVVLQDLLAYVSSKHSYLRDLPPRQPQRVNSIDFVELE          HLQPDVLVHAVL          RVVDFTILTEAVYSYRGQKQKKVMLTVEQAQDQHYAL          VLWGPAAAWYPQL</p>
-----------------	--

QRKKGVVLIKAQISELAFPITASQKIALNAHSSLKSIFSS  
LPNIVYTGCA  
KCGLELETDENRYKQCFSCLPFTMKKIYR PALMTAID  
GRHDVCIRVES  
KLIEKILLNISADCLNRVIVPSSEITYGMVVADLFHSL LAV  
SAEPCVLKI  
QSLFVLDENSYPLQQDFSLDFYDPDKHGANARL

**Amino acids** 1 to 835  
**Tags** GST tag N-Terminus

### Specifications

---

Our [Abpromise guarantee](#) covers the use of **ab162773** in the following tested applications.

The application notes include recommended starting dilutions; optimal dilutions/concentrations should be determined by the end user.

**Applications** ELISA  
Western blot

**Form** Liquid

**Additional notes** Protein concentration is above or equal to 0.05 mg/ml.

### Preparation and Storage

---

**Stability and Storage** Shipped on dry ice. Upon delivery aliquot and store at -80°C. Avoid freeze / thaw cycles.  
pH: 8.00  
Constituents: 0.31% Glutathione, 0.79% Tris HCl

### General Info

---

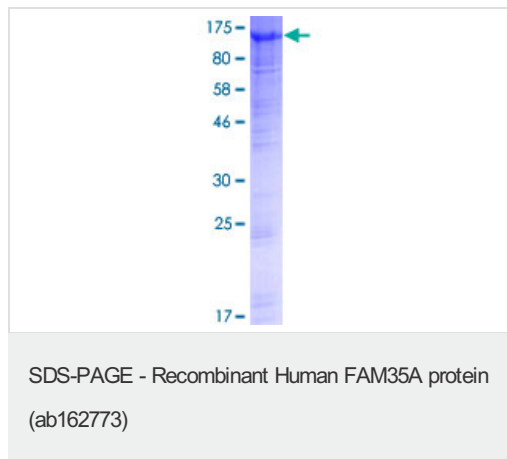
**Sequence similarities** Belongs to the FAM35 family.

**Post-translational modifications** Phosphorylated upon DNA damage, probably by ATM or ATR.

---

### Images

---



ab162773 on a 12.5% SDS-PAGE stained with Coomassie Blue.

**Please note:** All products are "FOR RESEARCH USE ONLY. NOT FOR USE IN DIAGNOSTIC PROCEDURES"

### **Our Abpromise to you: Quality guaranteed and expert technical support**

---

- Replacement or refund for products not performing as stated on the datasheet
- Valid for 12 months from date of delivery
- Response to your inquiry within 24 hours
  
- We provide support in Chinese, English, French, German, Japanese and Spanish
- Extensive multi-media technical resources to help you
- We investigate all quality concerns to ensure our products perform to the highest standards

If the product does not perform as described on this datasheet, we will offer a refund or replacement. For full details of the Abpromise, please visit <https://www.abcam.com/abpromise> or contact our technical team.

### **Terms and conditions**

---

- Guarantee only valid for products bought direct from Abcam or one of our authorized distributors