

Product datasheet

Recombinant human Fc epsilon RI/FCER1A protein
ab182693

2 Images

Description

Product name	Recombinant human Fc epsilon RI/FCER1A protein	
Biological activity	<p>Measured by its binding ability in a functional ELISA. Immobilized Human FCER1A at 2 µg/ml (100 µl/well).</p> <p>The concentration of Human IgE that produces 50% of the optimal binding response is found to be approximately 0.1 - 0.4 µg/ml.</p>	
Purity	> 90 % SDS-PAGE.	
Endotoxin level	< 1.000 Eu/µg	
Expression system	HEK 293 cells	
Accession	P12319	
Protein length	Protein fragment	
Animal free	No	
Nature	Recombinant	
Species	Human	
Sequence	<pre> VPQKPKVSLNPPWNRIFKGENVTLCNGNFFFEVSSTKW FHNGSLSEETN SSLNVNAKFEDSGEYKCQHQQVNESEPVYLEVFSDWLL LQASAEVVMG QPLFLRCHGWRNWDVYKVIYYKDGEALKYWYENHNISITN ATVEDSGTYY CTGKVVQLDYESEPLNITVIKAPREKYWLQ </pre>	
Predicted molecular weight	22 kDa including tags	
Amino acids	26 to 205	
Tags	His tag C-Terminus	
Additional sequence information	Extracellular domain. NP_001992.	

Specifications

Our [Abpromise guarantee](#) covers the use of **ab182693** in the following tested applications.

The application notes include recommended starting dilutions; optimal dilutions/concentrations should be determined by the end user.

Applications	SDS-PAGE Functional Studies
Form	Lyophilized
Additional notes	This product was previously labelled as Fc epsilon RI

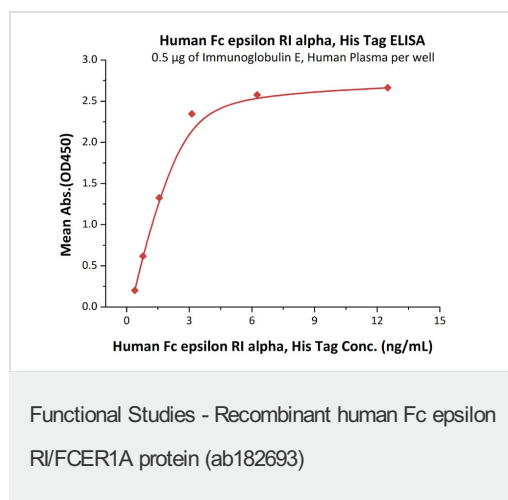
Preparation and Storage

Stability and Storage	Shipped at 4°C. Store at -80°C. Reconstitute for long term storage. pH: 7.40 Constituents: 5% Trehalose, 95% PBS This product is an active protein and may elicit a biological response in vivo, handle with caution.
Reconstitution	Reconstitute with sterile deionized water to a concentration of 200 µg/ml.

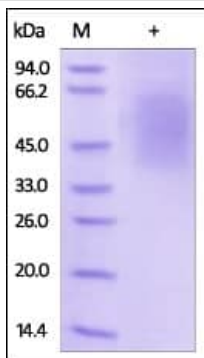
General Info

Function	Binds to the Fc region of immunoglobulins epsilon. High affinity receptor. Responsible for initiating the allergic response. Binding of allergen to receptor-bound IgE leads to cell activation and the release of mediators (such as histamine) responsible for the manifestations of allergy. The same receptor also induces the secretion of important lymphokines.
Sequence similarities	Contains 2 Ig-like (immunoglobulin-like) domains.
Cellular localization	Cell membrane.

Images



Immobilized Immunoglobulin E, Human Plasma at 5 µg/mL (100 µL/well) can bind Human Fc epsilon RI alpha, His Tag with a linear range of 0.4-3 ng/mL.



SDS-PAGE analysis of reduced ab182693 stained overnight with Coomassie Blue.

SDS-PAGE - Recombinant human Fc epsilon RI/FCER1A protein (ab182693)

Please note: All products are "FOR RESEARCH USE ONLY. NOT FOR USE IN DIAGNOSTIC PROCEDURES"

Our Abpromise to you: Quality guaranteed and expert technical support

- Replacement or refund for products not performing as stated on the datasheet
- Valid for 12 months from date of delivery
- Response to your inquiry within 24 hours
- We provide support in Chinese, English, French, German, Japanese and Spanish
- Extensive multi-media technical resources to help you
- We investigate all quality concerns to ensure our products perform to the highest standards

If the product does not perform as described on this datasheet, we will offer a refund or replacement. For full details of the Abpromise, please visit <https://www.abcam.com/abpromise> or contact our technical team.

Terms and conditions

- Guarantee only valid for products bought direct from Abcam or one of our authorized distributors