

Product datasheet

Recombinant Human FGF21 protein ab133137

1 Image

Description

<b>Product name</b>	Recombinant Human FGF21 protein
<b>Purity</b>	> 95 % SDS-PAGE.
<b>Expression system</b>	Escherichia coli
<b>Accession</b>	<a href="#">Q9NSA1</a>
<b>Protein length</b>	Full length protein
<b>Animal free</b>	No
<b>Nature</b>	Recombinant
<b>Species</b>	Human
<b>Sequence</b>	<b>GA</b> HP IPDSSPLLQF GGQVRQRYLY TDDAQQTEAH LEIREDTGTVG GAADQSPESL LQLKALKPGV IQILGVKTSR FLCQRPDGAL YGSLHFDPEA CSFRELLLED GYNVYQSEAH GLPLHLPGNK SPHRDPAPRG PARFLPLPGL PPALPEPPGI LAPQPPDVGS SDPLSMVGPS QGRSPSYAS
<b>Predicted molecular weight</b>	20 kDa
<b>Amino acids</b>	29 to 209

Specifications

Our [Abpromise guarantee](#) covers the use of **ab133137** in the following tested applications.

The application notes include recommended starting dilutions; optimal dilutions/concentrations should be determined by the end user.

<b>Applications</b>	SDS-PAGE Western blot ELISA
<b>Form</b>	Lyophilized

Preparation and Storage

<b>Stability and Storage</b>	Shipped at 4°C. Store at -20°C. Constituent: 99% PBS
------------------------------	---

## Reconstitution

Add deionized water to prepare a working stock solution of approximately 1 mg/mL and let the lyophilized pellet dissolve completely. Aliquot reconstituted protein to avoid repeated freezing/thawing cycles and store at  $-80^{\circ}\text{C}$  for long term storage.

## General Info

---

### Function

Stimulates glucose uptake in differentiated adipocytes via the induction of glucose transporter SLC2A1/GLUT1 expression (but not SLC2A4/GLUT4 expression). Activity requires the presence of KLB.

### Sequence similarities

Belongs to the heparin-binding growth factors family.

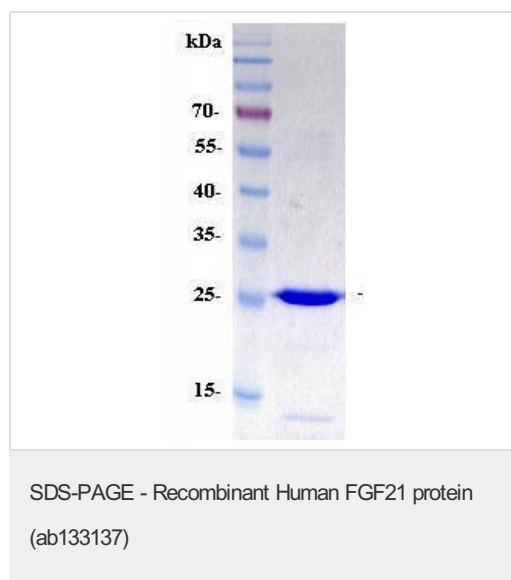
### Cellular localization

Secreted.

---

## Images

---



SDS-PAGE analysis of ab133137.

**Please note:** All products are "FOR RESEARCH USE ONLY. NOT FOR USE IN DIAGNOSTIC PROCEDURES"

## Our Abpromise to you: Quality guaranteed and expert technical support

---

- Replacement or refund for products not performing as stated on the datasheet
- Valid for 12 months from date of delivery
- Response to your inquiry within 24 hours
- We provide support in Chinese, English, French, German, Japanese and Spanish
- Extensive multi-media technical resources to help you
- We investigate all quality concerns to ensure our products perform to the highest standards

If the product does not perform as described on this datasheet, we will offer a refund or replacement. For full details of the Abpromise, please visit <https://www.abcam.com/abpromise> or contact our technical team.

## Terms and conditions

---

- Guarantee only valid for products bought direct from Abcam or one of our authorized distributors