

Product datasheet

Recombinant Human FLI1 protein ab132086

1 Image

Description

<b>Product name</b>	Recombinant Human FLI1 protein
<b>Expression system</b>	Wheat germ
<b>Accession</b>	<a href="#">Q01543</a>
<b>Protein length</b>	Full length protein
<b>Animal free</b>	No
<b>Nature</b>	Recombinant
<b>Species</b>	Human
<b>Sequence</b>	<p>MDGTIKEALSVVSDGQSLFDSAYGAAHLPKADMAASGS            PDYGQPHKINP            LPPQQEWISQPVRVNVKREYDHMNGSRESPVDCSVSKC            SKLVGGGESNPM            NYNSYMDEKNGPPPNMTTNERRVIPADPTLWTQEHVR            QWLEWAIKEYS            LMEIDTSFFQNMDGKELCKMNKEDFLRATTLYNTEVLLSH            LSYLRESSLL            AYNTTSHTDQSSRLSVKEDPSYDSVRRGAWGNMNSGL            NKSPPLGGAQTI            SKNTEQRPQDPYQILGPTSSRLANPGSGQIQLWQFLLEL            LSDSANASCI            TWEGTNGEFKMTDPDEVARRWGERISKPNMNYDKLSRA            LRYYYDKNIMTK            VH GKRYAYKFD FHGIAQALQPHPTESSMYKYPDISYMP S            YHAHQKQVNF            VPPHPSSMPVTSSSFFGAASQYWTSP TGGYPNPVPRH            PNTHVPSHLGS YY</p>
<b>Predicted molecular weight</b>	75 kDa including tags
<b>Amino acids</b>	1 to 452

Specifications

Our [Abpromise guarantee](#) covers the use of **ab132086** in the following tested applications.

The application notes include recommended starting dilutions; optimal dilutions/concentrations should be determined by the end user.

**Applications** SDS-PAGE

	Western blot
	ELISA
<b>Form</b>	Liquid

## Preparation and Storage

---

<b>Stability and Storage</b>	Shipped on dry ice. Upon delivery aliquot and store at -80°C. Avoid freeze / thaw cycles. pH: 8.00 Constituents: 0.31% Glutathione, 0.79% Tris HCl
------------------------------	--

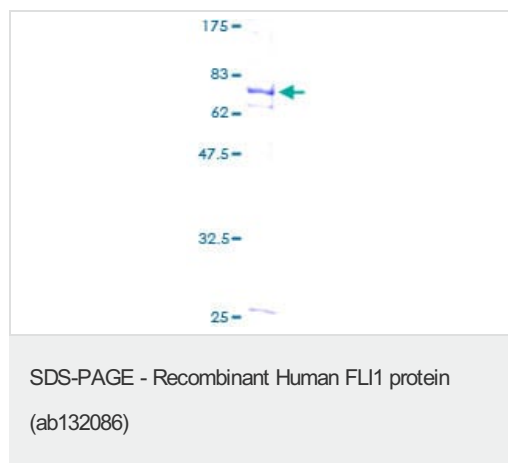
## General Info

---

<b>Function</b>	Sequence-specific transcriptional activator. Recognizes the DNA sequence 5'-C[CA]GGAAGT-3'.
<b>Involvement in disease</b>	Defects in FLI1 are a cause of Ewing sarcoma (ES) [MIM:612219]. A highly malignant, metastatic, primitive small round cell tumor of bone and soft tissue that affects children and adolescents. It belongs to the Ewing sarcoma family of tumors, a group of morphologically heterogeneous neoplasms that share the same cytogenetic features. They are considered neural tumors derived from cells of the neural crest. Ewing sarcoma represents the less differentiated form of the tumors. Note=A chromosomal aberration involving FLI1 is found in patients with Erwing sarcoma. Translocation t(11;22)(q24;q12) with EWSR1.
<b>Sequence similarities</b>	Belongs to the ETS family. Contains 1 ETS DNA-binding domain. Contains 1 PNT (pointed) domain.
<b>Cellular localization</b>	Nucleus.

## Images

---



12.5% SDS-PAGE analysis of ab132086 stained with Coomassie Blue.

**Please note:** All products are "FOR RESEARCH USE ONLY. NOT FOR USE IN DIAGNOSTIC PROCEDURES"

**Our Abpromise to you: Quality guaranteed and expert technical support**

---

- Replacement or refund for products not performing as stated on the datasheet
- Valid for 12 months from date of delivery
- Response to your inquiry within 24 hours
  
- We provide support in Chinese, English, French, German, Japanese and Spanish
- Extensive multi-media technical resources to help you
- We investigate all quality concerns to ensure our products perform to the highest standards

If the product does not perform as described on this datasheet, we will offer a refund or replacement. For full details of the Abpromise, please visit <https://www.abcam.com/abpromise> or contact our technical team.

### **Terms and conditions**

---

- Guarantee only valid for products bought direct from Abcam or one of our authorized distributors