

Product datasheet

Recombinant Human FLJ21963 protein ab164048

1 Image

Overview

<b>Product name</b>	Recombinant Human FLJ21963 protein
<b>Protein length</b>	Full length protein

Description

<b>Nature</b>	Recombinant
<b>Source</b>	Wheat germ
<b>Amino Acid Sequence</b>	
<b>Species</b>	Human

<b>Sequence</b>	<p>MKPSWLQCRKVTSAAGGLGGPLPGSSPARGAGAALR          ALVVPGPRGGLGGRG          CRALSSGSGSEYKTHFAASVTDPERFWGKAAEQISW          YKPWTKTLENKHSP          STRWFVEGMLNICYNAVDRHIENGKGDKIAIYDSPVTNT          KATFTYKEVL          EQVSKLAGVLVKHGIIKGDVVYMPMIPQAMYTMLAC          ARIGAIHSLIFG          GFASKELSSRIDHVKPKVVVTASFGIEPGRRVEYVPLV          EEALKIGQHKPD          KILYNRPNMEAVPLAPGRDLWDDEEMAKAQSHDCVP          VLSEHPLYLYTS          GTTGLPKGVIRPTGGYAVMLHWSMSSYGLQPGEVWW          AASDLGWVVGHSY          ICYGPLLHGNTTVLYEGKPVGTPDAGAYFRVLAEHGVA          ALFTAPTAIRAI          RQQDPGAALGKQYSLTRFKTLFVAGERCDVETLEWS          KNVFRVPVLDHWWQ          TETGSPITASCVGLGNSKTPPPGQAGKSVPGYNMILD          DNMQKLKARCLG          NIVVKLPLPPGAFSGLWKNQEAFKHLYFEKFPGYDYD          MDAGYMDEEGYLY          VMSRVDDVINVAGHRISAGAIEESILSHGTVADCAVVG          KEDPLKGHVPLA          LCVLRKDINATEEQVLEEIVKHVRQNIQNPVAAFRNAVVFV          KQLPKTRSGKI</p>
-----------------	---

**Amino acids** 1 to 686  
**Tags** proprietary tag N-Terminus

**Specifications**

---

Our [Abpromise guarantee](#) covers the use of **ab164048** in the following tested applications.

The application notes include recommended starting dilutions; optimal dilutions/concentrations should be determined by the end user.

**Applications** Western blot  
 ELISA  
**Form** Liquid  
**Additional notes** Protein concentration is above or equal to 0.05 mg/ml.

**Preparation and Storage**

---

**Stability and Storage** Shipped on dry ice. Upon delivery aliquot and store at -80°C. Avoid freeze / thaw cycles.  
 pH: 8.00  
 Constituents: 0.31% Glutathione, 0.79% Tris HCl

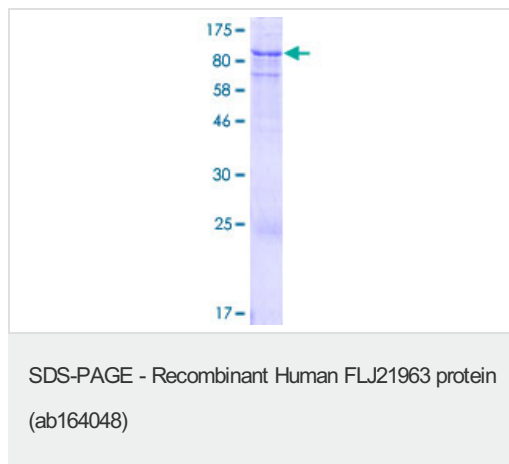
**General Info**

---

**Function** Activates acetate so that it can be used for lipid synthesis or for energy generation.  
**Sequence similarities** Belongs to the ATP-dependent AMP-binding enzyme family.  
**Cellular localization** Mitochondrion.

**Images**

---



ab164048 on a 12.5% SDS-PAGE stained with Coomassie Blue.

**Please note:** All products are "FOR RESEARCH USE ONLY AND ARE NOT INTENDED FOR DIAGNOSTIC OR THERAPEUTIC USE"

## **Our Abpromise to you: Quality guaranteed and expert technical support**

---

- Replacement or refund for products not performing as stated on the datasheet
- Valid for 12 months from date of delivery
- Response to your inquiry within 24 hours
  
- We provide support in Chinese, English, French, German, Japanese and Spanish
- Extensive multi-media technical resources to help you
- We investigate all quality concerns to ensure our products perform to the highest standards

If the product does not perform as described on this datasheet, we will offer a refund or replacement. For full details of the Abpromise, please visit <https://www.abcam.com/abpromise> or contact our technical team.

## **Terms and conditions**

---

- Guarantee only valid for products bought direct from Abcam or one of our authorized distributors