

## Product datasheet

# Recombinant Human Frizzled 6 protein ab152855

1 Image

### Description

<b>Product name</b>	Recombinant Human Frizzled 6 protein	
<b>Expression system</b>	Wheat germ	
<b>Accession</b>	<a href="#">O60353</a>	
<b>Protein length</b>	Protein fragment	
<b>Animal free</b>	No	
<b>Nature</b>	Recombinant	
<b>Species</b>	Human	
<b>Sequence</b>	PNIETFLCKAFVPTCIEQIHVVPPCRKLCEKVYSDCKKLIDT FGIRWPEE LECDRLQYCDETVPVTFDPHTEFLGPQKKTEQVQRDIGF WCPRHLKTSGG QGYKFLGIDQC	
<b>Predicted molecular weight</b>	38 kDa including tags	
<b>Amino acids</b>	71 to 181	

### Specifications

Our [Abpromise guarantee](#) covers the use of **ab152855** in the following tested applications.

The application notes include recommended starting dilutions; optimal dilutions/concentrations should be determined by the end user.

<b>Applications</b>	Western blot
	ELISA
	SDS-PAGE
<b>Form</b>	Liquid
<b>Additional notes</b>	

### Preparation and Storage

<b>Stability and Storage</b>	Shipped on dry ice. Upon delivery aliquot and store at -80°C. Avoid freeze / thaw cycles. pH: 8.00 Constituents: 0.31% Glutathione, 0.79% Tris HCl
------------------------------	--

## General Info

### Function

Receptor for Wnt proteins. Most of frizzled receptors are coupled to the beta-catenin canonical signaling pathway, which leads to the activation of disheveled proteins, inhibition of GSK-3 kinase, nuclear accumulation of beta-catenin and activation of Wnt target genes. A second signaling pathway involving PKC and calcium fluxes has been seen for some family members, but it is not yet clear if it represents a distinct pathway or if it can be integrated in the canonical pathway, as PKC seems to be required for Wnt-mediated inactivation of GSK-3 kinase. Both pathways seem to involve interactions with G-proteins. May be involved in transduction and intercellular transmission of polarity information during tissue morphogenesis and/or in differentiated tissues. Together with FZD3, is involved in the neural tube closure and plays a role in the regulation of the establishment of planar cell polarity (PCP), particularly in the orientation of asymmetric bundles of stereocilia on the apical faces of a subset of auditory and vestibular sensory cells located in the inner ear.

### Tissue specificity

Detected in adult heart, brain, placenta, lung, liver, skeletal muscle, kidney, pancreas, thymus, prostate, testis, ovary, small intestine and colon. In the fetus, expressed in brain, lung, liver and kidney.

### Involvement in disease

Nail disorder, non-syndromic congenital, 10  
Rare non-synonymous variants in FZD6 may contribute to neural tube defects, congenital malformations of the central nervous system and adjacent structures related to defective neural tube closure during the first trimester of pregnancy.

### Sequence similarities

Belongs to the G-protein coupled receptor Fz/Smo family.  
Contains 1 FZ (frizzled) domain.

### Domain

Lys-Thr-X-X-X-Trp motif interacts with the PDZ domain of Dvl (Disheveled) family members and is involved in the activation of the Wnt/beta-catenin signaling pathway.  
The FZ domain is involved in binding with Wnt ligands.

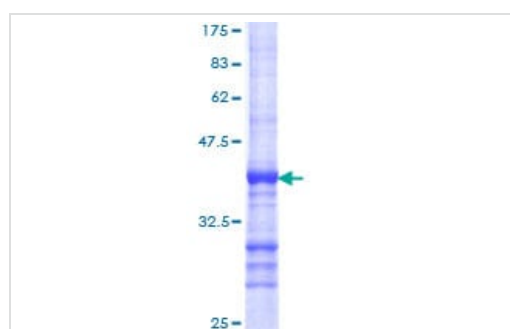
### Post-translational modifications

Ubiquitinated by ZNRF3, leading to its degradation by the proteasome.

### Cellular localization

Membrane. Cell membrane. Cell surface. Apical cell membrane. Cytoplasmic vesicle membrane. Colocalizes with FZD3 at the apical face of cells (By similarity).

## Images



12.5% SDS-PAGE analysis of ab152855 stained with Coomassie Blue.

SDS-PAGE - Recombinant Human Frizzled 6 protein (ab152855)

**Please note:** All products are "FOR RESEARCH USE ONLY. NOT FOR USE IN DIAGNOSTIC PROCEDURES"

### **Our Abpromise to you: Quality guaranteed and expert technical support**

---

- Replacement or refund for products not performing as stated on the datasheet
- Valid for 12 months from date of delivery
- Response to your inquiry within 24 hours
  
- We provide support in Chinese, English, French, German, Japanese and Spanish
- Extensive multi-media technical resources to help you
- We investigate all quality concerns to ensure our products perform to the highest standards

If the product does not perform as described on this datasheet, we will offer a refund or replacement. For full details of the Abpromise, please visit <https://www.abcam.com/abpromise> or contact our technical team.

### **Terms and conditions**

---

- Guarantee only valid for products bought direct from Abcam or one of our authorized distributors