

Product datasheet

Recombinant Human FUK protein ab165843

1 Image

Overview

Product name	Recombinant Human FUK protein
Protein length	Full length protein

Description

Nature	Recombinant
Source	Wheat germ
Amino Acid Sequence	
Species	Human

Sequence	<p>MEQPKGVDWTVIILTCQYKDSVQVFQRELEVRQKREQI PAGTLLLAVEDP EKRVGSGGATLNALLVAAEHL SARAGFTVVTSDVLHS AWILILHMGRDFP FDDCGRAFTCLPVENPEAPVEALVCNLDCLLDIMTYR LGPGSPPGVWVCS TDMLLSVPANPGISWDSFRGARVIALPGSPAYAQNHG VYLTDPQGLVLDI YYQGTEAEIQRCPDGRVPLVSGVVFFSVETAERLL ATHVSPPLDACTY LGLDSGARPVQLSLFFDILHCMAENV TREDFLVGRPP ELGQGDADVAGYL QSARAQLWRELRDQPLTMA YVSSGSYSYMTSSASEF LLSLTLPGAPGAQI VHSQVEEQQLLAAGSSVVSCLLEGPVQLGPGSVLQH CHLQGPIHIGAGCL VTGLDTAHSKALHGREL RDLVLQGHHTRLHGSPGHAF TLVGRLD SWERQG AGTYLNVPWSEFFKRTGVRAWDLWDPETLPAEYCLP SARLFPVLHPSREL GPQDLLWMLDHQEDGGEALRAWRASWRLSWEQLQ PCLDRAATLASRRDLF FRQALHKARHVLEARQDLSLRPLIWA AVREGCPGPLL ATLDQVAAGAGDP GVAARALACVADV LGCMAEGRGGLRSGPAANPEWM RPFSSYLECGDLAAGV</p>
-----------------	---

EALAQERDKWLSRPALLVRAARHYEGAGQILIRQAVM
SAQHFVSTEQVEL
PGPGQWVVAECPARVDFSGGWSDTPLAYELGGAV
LGLAVRVDGRRPIGA
RARRIPEPELWLA VGPRQDEMTVKIVCRCLADLRDYC
QPHAPGALLKAAF
ICAGMVHVHSELQLSEQLLRTFGGGFELHTWSELPHGS
GLGTSSILAGTA
LAALQRAAGR VVGTEALIHAVLHLEQVLTGGGWQDQ
VGGLMPGIKVGRS
RAQLPLKVEVEEVTVPEGFVQKLNHLLLVTGKTRLA
RNLLQDVLRSWY
ARLPAVVQNAHSLVRQTEECAEGFRQGSLPLLQCLT
SYWEQKKLMPGC
EPLTVRRMMDVLAPHVHGQSLAGAGGGGFLYLLTKEP
QQKEALEAVLAKT
EGLGNYSIHLVEVD TQGLSLKLLGTEASTCCPFP

Amino acids 1 to 1084
Tags proprietary tag N-Terminus

Specifications

Our [Abpromise guarantee](#) covers the use of **ab165843** in the following tested applications.

The application notes include recommended starting dilutions; optimal dilutions/concentrations should be determined by the end user.

Applications ELISA
Western blot

Form Liquid

Additional notes Protein concentration is above or equal to 0.05 mg/ml.

Preparation and Storage

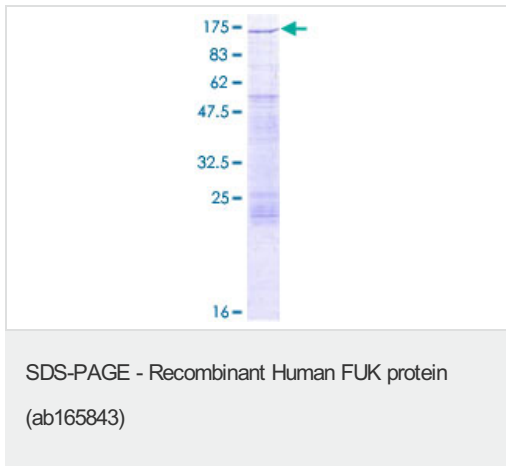
Stability and Storage Shipped on dry ice. Upon delivery aliquot and store at -80°C. Avoid freeze / thaw cycles.
pH: 8.00
Constituents: 0.31% Glutathione, 0.79% Tris HCl

General Info

Function Takes part in the salvage pathway for reutilization of fucose from the degradation of oligosaccharides.

Sequence similarities Belongs to the GHMP kinase family.

Images



ab165843 on a 12.5% SDS-PAGE stained with Coomassie Blue.

Please note: All products are "FOR RESEARCH USE ONLY AND ARE NOT INTENDED FOR DIAGNOSTIC OR THERAPEUTIC USE"

Our Abpromise to you: Quality guaranteed and expert technical support

- Replacement or refund for products not performing as stated on the datasheet
- Valid for 12 months from date of delivery
- Response to your inquiry within 24 hours

- We provide support in Chinese, English, French, German, Japanese and Spanish
- Extensive multi-media technical resources to help you
- We investigate all quality concerns to ensure our products perform to the highest standards

If the product does not perform as described on this datasheet, we will offer a refund or replacement. For full details of the Abpromise, please visit <https://www.abcam.com/abpromise> or contact our technical team.

Terms and conditions

- Guarantee only valid for products bought direct from Abcam or one of our authorized distributors