

Product datasheet

Recombinant Human FUT3 protein ab152401

1 Image

Description

Product name	Recombinant Human FUT3 protein	
Expression system	Wheat germ	
Accession	P21217	
Protein length	Full length protein	
Animal free	No	
Nature	Recombinant	
Species	Human	
Sequence	MDPLGAAKPQWPWRRCLAALLFQLLVAVCFFSYLRV SRDDATGSPRAPSG SSRQDTPTRPTLLILLWTWPFHIPVALSRCSEMVPGT ADCHITADRKVY PQADTVVHHWDIMSNPKSRLPPSPRPQGQRWIFNL EPPPNCQHLEALD RYFNLTMSYRSDSDIFTPYGWLEPWGQPAHPPLNLS AKTELVAVAVSNW KPDSARVRYQSLQAHLKVDVYGRSHKPLPKGTMME TLSRYKFYLAFENS LHPDYTEKLWRNALEAWAVPVVLGPSRSNYERFLPP DAFIHVDDFQSPK DLARYLQELDKDHARYLSYFRWRETLRPRSFSWALDF CKACWKLQQESRYQTVRSIAAWFT	
Predicted molecular weight	69 kDa including tags	
Amino acids	1 to 361	

Specifications

Our [Abpromise guarantee](#) covers the use of **ab152401** in the following tested applications.

The application notes include recommended starting dilutions; optimal dilutions/concentrations should be determined by the end user.

Applications	SDS-PAGE
	Western blot
	ELISA
Form	Liquid

Additional notes

Preparation and Storage

Stability and Storage

Shipped on dry ice. Upon delivery aliquot and store at -80°C. Avoid freeze / thaw cycles.

pH: 8.00

Constituents: 0.31% Glutathione, 0.79% Tris HCl

General Info

Function

May catalyze alpha-1,3 and alpha-1,4 glycosidic linkages involved in the expression of Vim-2, Lewis A, Lewis B, sialyl Lewis X and Lewis X/SSEA-1 antigens. May be involved in blood group Lewis determination; Lewis-positive (Le(+)) individuals have an active enzyme while Lewis-negative (Le(-)) individuals have an inactive enzyme. Also acts on the corresponding 1,4-galactosyl derivative, forming 1,3-L-fucosyl links.

Tissue specificity

Highly expressed in stomach, colon, small intestine, lung and kidney and to a lesser extent in salivary gland, bladder, uterus and liver.

Pathway

Protein modification; protein glycosylation.

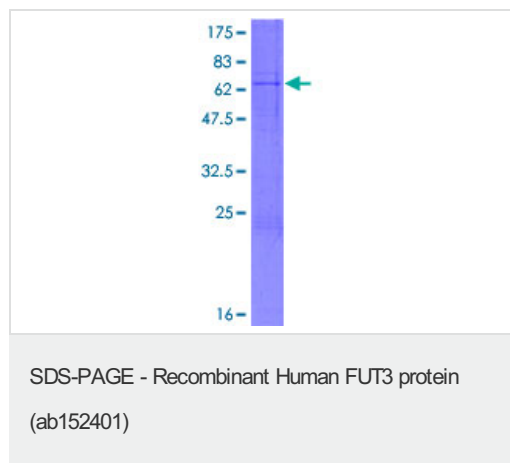
Sequence similarities

Belongs to the glycosyltransferase 10 family.

Cellular localization

Golgi apparatus > Golgi stack membrane. Membrane-bound form in trans cisternae of Golgi.

Images



12.5% SDS-PAGE analysis of ab152401 stained with Coomassie Blue.

Please note: All products are "FOR RESEARCH USE ONLY. NOT FOR USE IN DIAGNOSTIC PROCEDURES"

Our Promise to you: Quality guaranteed and expert technical support

- Replacement or refund for products not performing as stated on the datasheet
- Valid for 12 months from date of delivery
- Response to your inquiry within 24 hours

- We provide support in Chinese, English, French, German, Japanese and Spanish
- Extensive multi-media technical resources to help you
- We investigate all quality concerns to ensure our products perform to the highest standards

If the product does not perform as described on this datasheet, we will offer a refund or replacement. For full details of the Abpromise, please visit <https://www.abcam.com/abpromise> or contact our technical team.

Terms and conditions

- Guarantee only valid for products bought direct from Abcam or one of our authorized distributors