

Product datasheet

Recombinant Human FUT8 protein ab114702

1 Image

Description

<b>Product name</b>	Recombinant Human FUT8 protein
<b>Expression system</b>	Wheat germ
<b>Accession</b>	<a href="#">Q9BYC5</a>
<b>Protein length</b>	Full length protein
<b>Animal free</b>	No
<b>Nature</b>	Recombinant
<b>Species</b>	Human
<b>Sequence</b>	<pre>MRPWTGSWRWIMLILFAWGTLFFYIGGHLVRDNDHPDHSS RELSKILAKL ERLKQQNEDLRRMAESLRPEGPIDQGPAIGRVRVLEEQL VKAKEQIENY KKQTRNGLGKDHEILRRRIENGAKELWFFLQSELKCLKNL EGNELQRHAD EFLDLGHHERSIMTDLYLSQTDGAGDWREKEAKDLTEL VQRRITYLQN PKDCSKAKKLVCNINKGCGYGCQLHHVVYCFMAYGTQRT LILESQNWRY ATGGWETVFRPVSETCTDRSGISTGHWSGEVKDKNVQV VELPMDSLHPR PPYLPLAVPEDLADRLVRVHGDPVWVWSQFVKYLIRPQ PWLEKEIEEAT KKLGFKHPVIGVHVRRTDKVGTEAAFHPIEEYMVHVEEHF QLLARRMQVD KKRVYLATDDPSLLKEAKTKYPNYEFISDNSISWSAGLHNR YTENSLRGV ILDHFLSQADFLVCTFSSQVCRVAYEIMQTLHPDASANFH SLDDIYFG GQNAHNQIAYAHQPRTADEIPMEPGDIIGVAGNHWDGYSK GVNRKLGRT GLYPSYKVREKIETVKYPTYPEAEK</pre>
<b>Predicted molecular weight</b>	89 kDa including tags
<b>Amino acids</b>	1 to 575

Specifications

Our [Abpromise guarantee](#) covers the use of **ab114702** in the following tested applications.

The application notes include recommended starting dilutions; optimal dilutions/concentrations should be determined by the end user.

**Applications** ELISA  
SDS-PAGE  
Western blot

**Form** Liquid

**Additional notes**

## Preparation and Storage

---

**Stability and Storage** Shipped on dry ice. Upon delivery aliquot and store at -80°C. Avoid freeze / thaw cycles.  
pH: 8.00  
Constituents: 0.3% Glutathione, 0.79% Tris HCl

## General Info

---

**Function** Catalyzes the addition of fucose in alpha 1-6 linkage to the first GlcNAc residue, next to the peptide chains in N-glycans.

**Pathway** Protein modification; protein glycosylation.

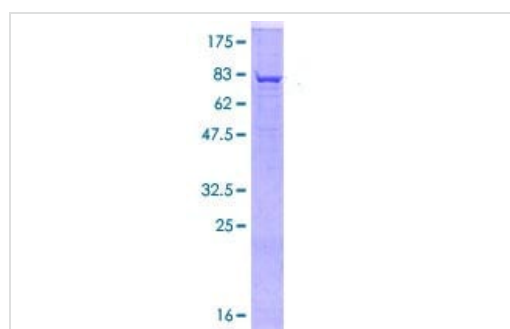
**Sequence similarities** Belongs to the glycosyltransferase 23 family.  
Contains 1 SH3 domain.

**Cellular localization** Golgi apparatus > Golgi stack membrane. Membrane-bound form in trans cisternae of Golgi.

---

## Images

---



12.5% SDS-PAGE showing ab114702 at approximately 89.32 kDa stained with Coomassie Blue.

SDS-PAGE - Recombinant Human FUT8 protein  
(ab114702)

**Please note:** All products are "FOR RESEARCH USE ONLY. NOT FOR USE IN DIAGNOSTIC PROCEDURES"

**Our Abpromise to you: Quality guaranteed and expert technical support**

---

- Replacement or refund for products not performing as stated on the datasheet
- Valid for 12 months from date of delivery
- Response to your inquiry within 24 hours
  
- We provide support in Chinese, English, French, German, Japanese and Spanish
- Extensive multi-media technical resources to help you
- We investigate all quality concerns to ensure our products perform to the highest standards

If the product does not perform as described on this datasheet, we will offer a refund or replacement. For full details of the Abpromise, please visit <https://www.abcam.com/abpromise> or contact our technical team.

### **Terms and conditions**

---

- Guarantee only valid for products bought direct from Abcam or one of our authorized distributors