

Product datasheet

Recombinant human Galectin 3 protein ab78583

1 Image

Description

Product name	Recombinant human Galectin 3 protein
Biological activity	The activity is determined by the ability to induce chemotaxis of human PBMCs at concentrations ranging from 2-220 µg/mL. Corresponding to a specific activity of 5 x 10 ² units/mg.
Purity	> 95 % SDS-PAGE. Purity Approximately 97% as determined by: Analysis by RP-HPLC. Reducing and non-reducing SDS-PAGE. Endotoxin level as measured by LAL is <0.01ng/µg or <0.1EU/µg.
Expression system	Escherichia coli
Protein length	Full length protein
Animal free	No
Nature	Recombinant
Species	Human
Sequence	ADNFSLHDAL SGSGNPNPQG WPGAWGNQPA GAGGYPGASY PGAYPGQAPP GAYPGQAPPG AYHGAPGAYP GAPAPGVYPG PPSGPGAYPS SGQPSAPGAY PATGPGYGA PA GPLMPYNLP LPGGVVPRML ITILGTVKPN ANRIALDFQR GNDVAFHFNP RFNENRRRVI VCNTKLDNNW GREERQSVFP FESGKPFKIQ VLVEPDHFKV AVNDAHLLQY NHRVKKLNEI SKLGISGDID LTSASYTMI
Predicted molecular weight	26 kDa
Amino acids	1 to 250

Specifications

Our [Abpromise guarantee](#) covers the use of **ab78583** in the following tested applications.

The application notes include recommended starting dilutions; optimal dilutions/concentrations should be determined by the end user.

Applications	SDS-PAGE
Form	Lyophilized
Additional notes	For long term storage it is recommended to add a carrier protein (0.1% HSA or BSA).

Preparation and Storage

Stability and Storage

Shipped at 4°C. Upon delivery aliquot and store at -20°C or -80°C. Avoid repeated freeze / thaw cycles.

Constituents: 0.164% Sodium phosphate, 0.29% Sodium chloride

This product is an active protein and may elicit a biological response in vivo, handle with caution.

Reconstitution

Reconstitute with sterile water at 0.1-1.0 mg/ml, which can then be further diluted to other aqueous solutions.

General Info

Function

Galactose-specific lectin which binds IgE. May mediate with the alpha-3, beta-1 integrin the stimulation by CSPG4 of endothelial cells migration. Together with DMBT1, required for terminal differentiation of columnar epithelial cells during early embryogenesis.

Tissue specificity

A major expression is found in the colonic epithelium. It is also abundant in the activated macrophages.

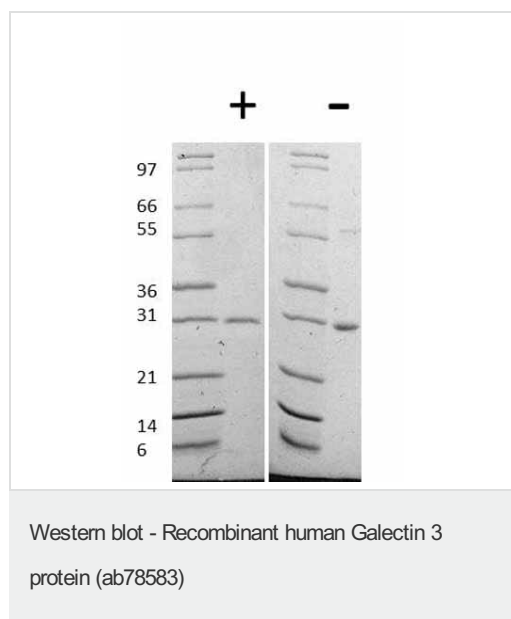
Sequence similarities

Contains 1 galectin domain.

Cellular localization

Nucleus. Cytoplasmic in adenomas and carcinomas. May be secreted by a non-classical secretory pathway and associate with the cell surface.

Images



ab78583 used in Western Blot. Figure: 1 ug under (+) reducing and (-) non-reducing conditions in a 4-20% Tris-Glycine gel stained with Coomassie Blue. Human Galectin-3 has a predicted MW of 26 kDa.

Please note: All products are "FOR RESEARCH USE ONLY. NOT FOR USE IN DIAGNOSTIC PROCEDURES"

Our Abpromise to you: Quality guaranteed and expert technical support

- Replacement or refund for products not performing as stated on the datasheet
- Valid for 12 months from date of delivery
- Response to your inquiry within 24 hours

- We provide support in Chinese, English, French, German, Japanese and Spanish
- Extensive multi-media technical resources to help you
- We investigate all quality concerns to ensure our products perform to the highest standards

If the product does not perform as described on this datasheet, we will offer a refund or replacement. For full details of the Abpromise, please visit <https://www.abcam.com/abpromise> or contact our technical team.

Terms and conditions

- Guarantee only valid for products bought direct from Abcam or one of our authorized distributors