

Product datasheet

Recombinant Human GALT protein ab139613

1 Image

Description

Product name	Recombinant Human GALT protein
Purity	> 85 % SDS-PAGE. ab139613 is purified using conventional chromatography techniques.
Expression system	Escherichia coli
Accession	P07902
Protein length	Full length protein
Animal free	No
Nature	Recombinant
Species	Human
Sequence	<p>MGSSHHHHHH SSGLVPRGSH MGSMSRSRG DPQQRQQASE ADAAAATFRA NDHQHIRYNP LQDEWVLVSA HRMKRPWQGQ VEPQLLKTVP RHDPLNPLCP GAIRANGEVN PQYDSTFLFD NDFPALQPDA PSPGPSDHPL FQAKSARGVC KVMCFHPWSD VTLPLMSVPE IRAVVDAWAS VTEELGAQYP WVQIFENKGA MMGCSNPHPH CQVWASSFLP DIAQREERSQ QAYKSQHGE LLMEYSRQEL LRKERLVLTS EHWLVLPFW ATWPYQTL LPRRHVRLPE LTPAERDDLA SIMKKLLTKY DNLFETSFPY SMGWHGAPTG SEAGANWNHW QLHAHYYPPL LRSATVRKFM VGYEMLAQAQ RDLTPEQAAE RLRALPEVHY HLGQKDRETA TIA</p>
Predicted molecular weight	46 kDa including tags
Amino acids	1 to 379
Tags	His tag N-Terminus

Specifications

Our [Abpromise guarantee](#) covers the use of **ab139613** in the following tested applications.

The application notes include recommended starting dilutions; optimal dilutions/concentrations should be determined by the end user.

Applications	SDS-PAGE
	Mass Spectrometry

Mass spectrometry	MALDI-TOF
Form	Liquid

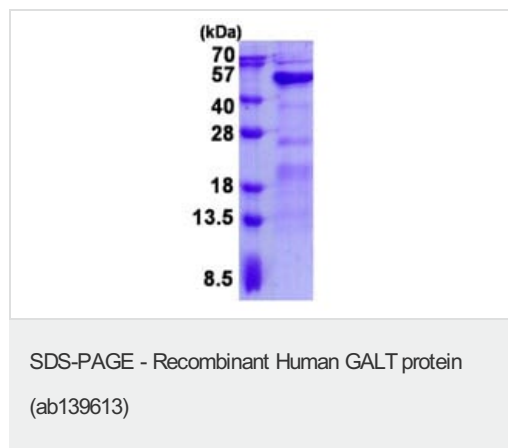
Preparation and Storage

Stability and Storage	Shipped at 4°C. Upon delivery aliquot and store at -20°C or -80°C. Avoid repeated freeze / thaw cycles. pH: 8.50 Constituents: 0.32% Tris HCl, 10% Glycerol (glycerin, glycerine), 1.17% Sodium chloride
------------------------------	----------------------------------------------------------------------------------------------------------------------------------------------------------------------------------------------------------------

General Info

Pathway	Carbohydrate metabolism; galactose metabolism.
Involvement in disease	Defects in GALT are the cause of galactosemia (GALCT) [MIM:230400]. Galactosemia is an inherited disorder of galactose metabolism that causes jaundice, cataracts, and mental retardation.
Sequence similarities	Belongs to the galactose-1-phosphate uridylyltransferase type 1 family.

Images



15% SDS-PAGE analysis of ab139613 (3µg).

Please note: All products are "FOR RESEARCH USE ONLY. NOT FOR USE IN DIAGNOSTIC PROCEDURES"

Our Abpromise to you: Quality guaranteed and expert technical support

- Replacement or refund for products not performing as stated on the datasheet
- Valid for 12 months from date of delivery
- Response to your inquiry within 24 hours
- We provide support in Chinese, English, French, German, Japanese and Spanish
- Extensive multi-media technical resources to help you
- We investigate all quality concerns to ensure our products perform to the highest standards

If the product does not perform as described on this datasheet, we will offer a refund or replacement. For full details of the Abpromise, please visit <https://www.abcam.com/abpromise> or contact our technical team.

Terms and conditions

- Guarantee only valid for products bought direct from Abcam or one of our authorized distributors