

Product datasheet

Recombinant Human GBP6 protein ab165759

1 Image

Overview

<b>Product name</b>	Recombinant Human GBP6 protein
<b>Protein length</b>	Full length protein

Description

<b>Nature</b>	Recombinant
<b>Source</b>	Wheat germ
<b>Amino Acid Sequence</b>	
<b>Species</b>	Human

<b>Sequence</b>	<p>MESGPKMLAPVCLVENNNEQLLVNQQAIQILEKISQPV  VVVAIVGLYRTG  KSYLMNHLAQNHGFPLGSTVQSETKGMMWCVPHP  SKPNHTLVLLDTEG  LGDVEKGDPKNDWIFALAVLLCSTFVYNSMSTINHQA  LEQLHWTELTE  LIKAKSSPRPDGVEDSTEFVSFFPDFLWTVRDFTELEK  LNGHPITEDEYL  ENALKLIQGNNPRVQTSNFPRECIRRRFFPKRKCFVFDR  PTNDKDLLANIE  KVSEKQLDPKFQEQTNIFCSYIFTHARTKTLREGITVTG  NRLGTLAVTYV  EAINSGAVPCLENAVITLAQRENSAAVQRASDYYSQQ  MAQRVKFPTDTLQ  ELLDVHAACEREAIAIFMEHSFKDENQEFQKKFMETT  MNKKGDFLLQNEE  SSVQYCQAKLNELSKGLMESISAGSFSVPGGHKLYME  TKERIEQDYWQVP  RKGVKAKEVFQRFLESQMVEESILQSDKALTDREKAV  AVDRAKKEAAEK  EQELLKQKLQEQQQQMEAQVKSRKENIAQLKEKLMQ  EREHLLREQIMMLE  HTQKVQNDWLHEGFKKKYEMNAEISQFKRMIDTTKN  DDTPWIARTLDNL  ADELTAILSAPAKLIGHGVKGVSSLFKKHKLPF</p>
-----------------	---

Amino acids 1 to 633

## Tags

GST tag N-Terminus

## Specifications

---

Our [Abpromise guarantee](#) covers the use of **ab165759** in the following tested applications.

The application notes include recommended starting dilutions; optimal dilutions/concentrations should be determined by the end user.

### Applications

ELISA

Western blot

### Form

Liquid

### Additional notes

Protein concentration is above or equal to 0.05 mg/ml.

## Preparation and Storage

---

### Stability and Storage

Shipped on dry ice. Upon delivery aliquot and store at -80°C. Avoid freeze / thaw cycles.

pH: 8.00

Constituents: 0.31% Glutathione, 0.79% Tris HCl

## General Info

---

### Function

Binds GTP, GDP and GMP.

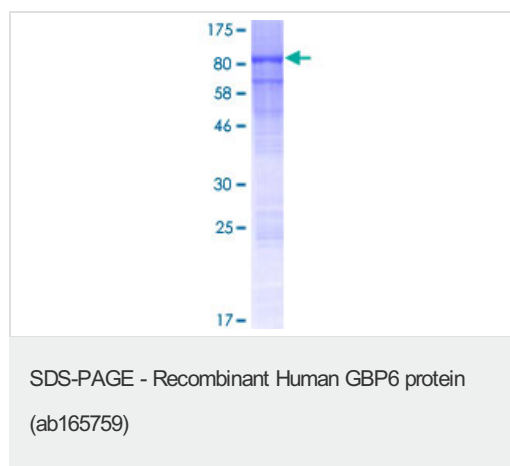
### Sequence similarities

Belongs to the GBP family.

---

## Images

---



ab165759 on a 12.5% SDS-PAGE stained with Coomassie Blue.

**Please note:** All products are "FOR RESEARCH USE ONLY AND ARE NOT INTENDED FOR DIAGNOSTIC OR THERAPEUTIC USE"

## Our Abpromise to you: Quality guaranteed and expert technical support

---

- Replacement or refund for products not performing as stated on the datasheet
- Valid for 12 months from date of delivery

- Response to your inquiry within 24 hours
- We provide support in Chinese, English, French, German, Japanese and Spanish
- Extensive multi-media technical resources to help you
- We investigate all quality concerns to ensure our products perform to the highest standards

If the product does not perform as described on this datasheet, we will offer a refund or replacement. For full details of the Abpromise, please visit <https://www.abcam.com/abpromise> or contact our technical team.

### **Terms and conditions**

---

- Guarantee only valid for products bought direct from Abcam or one of our authorized distributors