

Product datasheet

Recombinant Human GCET2 protein ab137147

1 Image

Description

Product name	Recombinant Human GCET2 protein	
Purity	> 85 % SDS-PAGE. ab137147 is purified using conventional chromatography techniques.	
Expression system	Escherichia coli	
Accession	Q8N6F7	
Protein length	Full length protein	
Animal free	No	
Nature	Recombinant	
Species	Human	
Sequence	MGSSHHHHHHSSGLVPRGSHMGSMGNSLLRENRRQ QNTQEMPWNVRMQSP KQRTSRCWDHHAIEGCFCLPWKKILIFEKRQDSQEN ERMSSTPIQDNVD QTYSEELCYTLINHRVLCRPSGNSAEEYYENVPCKAE RPRESLGGTETE YSLLHMPSTDPRHARSPEDYEYLLMPHRISSHFLQQP RPLMAPSETQFSH L	
Predicted molecular weight	23 kDa including tags	
Amino acids	1 to 178	
Tags	His tag N-Terminus	

Specifications

Our [Abpromise guarantee](#) covers the use of **ab137147** in the following tested applications.
 The application notes include recommended starting dilutions; optimal dilutions/concentrations should be determined by the end user.

Applications	Mass Spectrometry SDS-PAGE
Mass spectrometry	MALDI-TOF
Form	Liquid

Preparation and Storage

Stability and Storage

Shipped at 4°C. Store at +4°C short term (1-2 weeks). Upon delivery aliquot. Store at -20°C or -80°C. Avoid freeze / thaw cycle.

pH: 8.00

Constituents: 0.02% DTT, 0.32% Tris HCl, 50% Glycerol, 1.17% Sodium chloride

General Info**Function**

Involved in the negative regulation of lymphocyte motility. It mediates the migration-inhibitory effects of IL6. Serves as a positive regulator of the RhoA signaling pathway. Enhancement of RhoA activation results in inhibition of lymphocyte and lymphoma cell motility by activation of its downstream effector ROCK. Is a regulator of B-cell receptor signaling, that acts through SYK kinase activation.

Tissue specificity

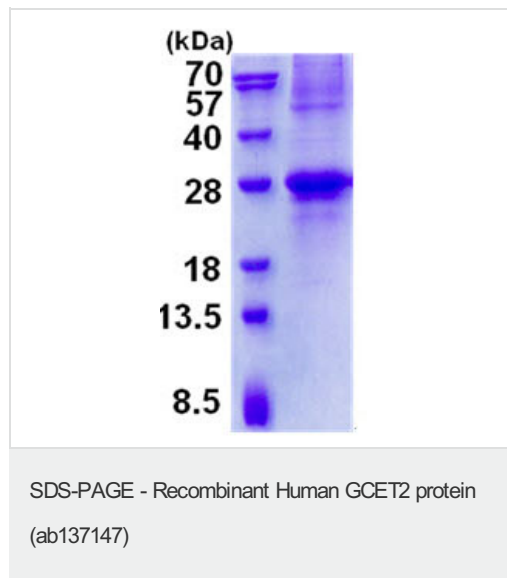
Expressed in diffuse large B-cell lymphoma (DLBCL) and several germinal center (GC)-like lymphoma cell lines (at protein level). Highly expressed in normal GC lymphocytes and GC-derived malignancies. Expressed in thymus and spleen.

Post-translational modifications

Phosphorylation on tyrosine residues can be induced by IL6. Phosphorylation is mediated by LYN.

Cellular localization

Cytoplasm. Cell membrane. It relocalizes from the cytoplasm to podosome-like structures upon cell treatment with IL6.

Images

15% SDS-PAGE analysis of 3 µg ab137147.

Please note: All products are "FOR RESEARCH USE ONLY. NOT FOR USE IN DIAGNOSTIC PROCEDURES"

Our Abpromise to you: Quality guaranteed and expert technical support

- Replacement or refund for products not performing as stated on the datasheet
- Valid for 12 months from date of delivery

- Response to your inquiry within 24 hours
- We provide support in Chinese, English, French, German, Japanese and Spanish
- Extensive multi-media technical resources to help you
- We investigate all quality concerns to ensure our products perform to the highest standards

If the product does not perform as described on this datasheet, we will offer a refund or replacement. For full details of the Abpromise, please visit <https://www.abcam.com/abpromise> or contact our technical team.

Terms and conditions

- Guarantee only valid for products bought direct from Abcam or one of our authorized distributors